

# **Acer LCD Monitor**

## **User Guide**

Copyright © 2023 Acer Incorporated.  
All Rights Reserved.

Acer LCD Monitor User Guide  
Original Issue: 07/2023

Changes may be made periodically to the information in this publication without obligation to notify any person of such revisions or changes. Such changes will be incorporated in new editions of this manual or supplementary documents and publications. This company makes no representations or warranties, either expressed or implied, with respect to the contents hereof and specifically disclaims the implied warranties of merchantability or fitness for a particular purpose.

Record the model number, serial number, purchase date and place of purchase information in the space provided below. The serial number and model number are recorded on the label affixed to your computer. All correspondence concerning your unit should include the serial number, model number and purchase information.

No part of this publication may be reproduced, stored in a retrieval system, or transmitted, in any form or by any means, electronically, mechanically, by photocopy, recording or otherwise, without the prior written permission of Acer Incorporated.

#### Acer LCD Monitor User Guide

Model number: \_\_\_\_\_

Serial number: \_\_\_\_\_

Date of purchase: \_\_\_\_\_

Place of purchase: \_\_\_\_\_

Acer and the Acer logo are registered trademarks of Acer Incorporated. Other companies' product names or trademarks are used herein for identification purposes only and belong to their respective companies.

# Information for your safety and comfort

## Safety instructions

Read these instructions carefully. Keep this document for future reference. Follow all warnings and instructions marked on the product.

## Special notes on LCD monitors

The following are normal with the LCD monitor and do not indicate a problem.

- Due to the nature of the fluorescent light, the screen may flicker during initial use. Turn off the power switch and then turn it on again to make sure the flicker disappears.
- You may find slightly uneven brightness on the screen depending on the desktop pattern you use.
- The LCD screen has 99.99% or more effective pixels. It may include blemishes of 0.01% or less such as a missing pixel or pixel lit all the time.
- Due to the nature of the LCD screen, an afterimage of the previous screen may remain after switching the image, when the same image is displayed for hours. In this case, the screen is recovered slowly by changing the image or turning off the power switch for a few hours.

## Cleaning your monitor

Please carefully follow these guidelines when cleaning the monitor:

- Always unplug the monitor before cleaning.
- Use a soft cloth to wipe the screen and cabinet front and sides.

## Accessibility


Be sure that the power outlet you plug the power cord into is easily accessible and located as close to the equipment operator as possible. When you need to disconnect power from the equipment, be sure to unplug the power cord from the electrical outlet.

## Safe listening

To protect your hearing, follow these instructions.

- Gradually increase the volume until you can hear it clearly and comfortably and without distortion.
- After setting the volume level, do not increase it after your ears have adjusted.
- Limit the amount of time listening to music at high volume.
- Avoid turning up the volume to block out noisy surroundings.
- Turn the volume down if you can't hear people speaking near you.

## Warnings

- Do not use this product near water.
- Do not place this product on an unstable cart, stand or table. If the product falls, it could be seriously damaged.
- Slots and openings are provided for ventilation to ensure reliable operation of the product and to protect it from overheating. These openings must not be blocked or covered. The openings should never be blocked by placing the product on a bed, sofa, rug or other similar surface. This product should never be placed near or over a radiator or heat register, or in a built-in installation unless proper ventilation is provided.
- Never push objects of any kind into this product through cabinet slots as they may touch dangerous voltage points or short-out parts that could result in a fire or electric shock. Never spill liquid of any kind onto or into the product.
- To avoid damage of internal components and to prevent battery leakage, do not place the product on a vibrating surface.
- Never use it under sporting, exercising, or any vibrating environment which will probably cause unexpected short current or damage internal devices.
- The adapter is only used for this monitor, do not be used for other purposes.
-  : Read these instructions – All the safety and operating instructions should be read before this product is operated and retain for reference. Use only power supplies listed in the user instructions, see below:
  - (1) Adapter Model:HCX4801-1204000C;HCX4801-1204000J;HCX4801-1204000A;  
HCX4801-1204000K;HCX4801-1204000E;HCX4801-1204000B;HCX4801-1204000U;  
HCX4801-1204000T  
Made By:GUANGDONG HUACHUANGXING POWER SUPPLY CO., LTD.
  - (2) Adapter Model: 2ABU120M ;  
Made By: Channel Well Technology Co.,Ltd.
  - (3) Adapter Model: YD-ZR2400500A-6A;  
Made By: DONGGUAN YIDAI POWER TECHNOLOGYCO.,LTD.

## Using electrical power

- This product should be operated from the type of power indicated on the marking label. If you are not sure of the type of power available, consult your dealer or local power company.
- Do not allow anything to rest on the power cord. Do not locate this product where people will walk on the cord.
- If an extension cord is used with this product, make sure that the total ampere rating of the equipment plugged into the extension cord does not exceed the extension cord ampere rating. Also, make sure that the total rating of all products plugged into the wall outlet does not exceed the fuse rating.
- Do not overload a power outlet, strip or receptacle by plugging in too many devices. The overall system load must not exceed 80% of the branch circuit rating. If power strips are used, the load should not exceed 80% of the power strip's input rating.
- This product's power cord is equipped with a three-wire grounded plug. The plug only fits in a grounded power outlet. Make sure the power outlet is properly grounded before inserting the power cord plug. Do not insert the plug into a non-grounded power outlet. Contact your electrician for details.



.....  
**Warning! The grounding pin is a safety feature. Using a power outlet that is not properly grounded may result in electric shock and/or injury.**



.....  
**Note:** The grounding pin also provides good protection from unexpected noise produced by other nearby electrical devices that may interfere with the performance of this product.

- Use the product only with the supplied power supply cord set. If you need to replace the power cord set, make sure that the new power cord meets the following requirements: detachable type, UL listed/CSA certified, type SPT-2, rated 7 A 125 V minimum, VDE approved or its equivalent, 4.6 meters (15 feet) maximum length.

## Product servicing

Do not attempt to service this product yourself, as opening or removing covers may expose you to dangerous voltage points or other risks. Refer all servicing to qualified service personnel.

Unplug this product from the wall outlet and refer servicing to qualified service personnel when:

- the power cord or plug is damaged, cut or frayed
- liquid was spilled into the product
- the product was exposed to rain or water
- the product has been dropped or the case has been damaged
- the product exhibits a distinct change in performance, indicating a need for service
- the product does not operate normally after following the operating instructions



**Note:** Adjust only those controls that are covered by the operating instructions, since improper adjustment of other controls may result in damage and will often require extensive work by a qualified technician to restore the product to normal condition.

## Potentially explosive environments

Switch off your device in any area with a potentially explosive atmosphere and obey all signs and instructions. Potentially explosive atmospheres include areas where you would normally be advised to turn off your vehicle engine. Sparks in such areas could cause an explosion or fire resulting in bodily injury or even death. Switch off the device near depots, storage and distribution areas; chemical plants; or where blasting operations are in progress. Areas with a potentially explosive atmosphere are often, but not always, marked. They include below deck on boats, chemical transfer or storage facilities, vehicles using liquefied petroleum gas (such as propane or butane), and areas where the air contains chemicals or particles such as grain, dust or metal powders.

## Additional safety information

Your device and its enhancements may contain small parts. Keep them out of the reach of small children.

## IT Equipment Recycling Information

Acer is strongly committed to environmental protection and views recycling, in the form of salvaging and disposal of used equipment, as one of the company's top priorities in minimizing the burden placed on the environment.

We at Acer are very conscious of the environmental effects of our business and strive to identify and provide the best working procedures to reduce the environmental impact of our products.

For more information and help when recycling, please go to this website:

<https://www.acer-group.com/sustainability/en/our-products-environment.html>

Visit [www.acer-group.com](http://www.acer-group.com) for further information on the features and benefits of our other products.

## Disposal instructions



Do not throw this electronic device into the trash when discarding. To minimize pollution and ensure utmost protection of the global environment, please recycle. For more information on the Waste from Electrical and Electronics Equipment (WEEE) regulations, visit <https://www.acer-group.com/sustainability/en/our-products-environment.html>

## Recycling Information for the United States of America

Acer encourages information technology (IT) equipment owners to responsibly recycle their equipment when it is no longer needed. Acer offers programs and services to assist equipment owners with this process.

For more information on recycling IT equipment, please go to:

<https://www.acer.com/ac/en/US/content/recycling>

## LCD pixel statement

The LCD unit is produced with high-precision manufacturing techniques. Nevertheless, some pixels may occasionally misfire or appear as black or red dots. This has no effect on the recorded image and does not constitute a malfunction.

This product has been shipped enabled for power management:

- Activate display's Sleep mode within 5 minutes of user inactivity.
- Wake the monitor when it is in Active Off mode, move the mouse or press any keyboard key.

## Tips and information for comfortable use

Computer users may complain of eyestrain and headaches after prolonged use. Users are also at risk of physical injury after long hours of working in front of a computer. Long work periods, bad posture, poor work habits, stress, inadequate working conditions, personal health and other factors greatly increase the risk of physical injury.

Incorrect computer usage may lead to carpal tunnel syndrome, tendonitis, tenosynovitis or other musculoskeletal disorders. The following symptoms may appear in the hands, wrists, arms, shoulders, neck or back:

- numbness, or a burning or tingling sensation
- aching, soreness or tenderness
- pain, swelling or throbbing
- stiffness or tightness
- coldness or weakness

If you have these symptoms, or any other recurring or persistent discomfort and/or pain related to computer use, consult a physician immediately and inform your company's health and safety department.

The following section provides tips for more comfortable computer use.

## Finding your comfort zone

Find your comfort zone by adjusting the viewing angle of the monitor, using a footrest, or raising your sitting height to achieve maximum comfort. Observe the following tips:

- refrain from staying too long in one fixed posture
- avoid slouching forward and/or leaning backward
- stand up and walk around regularly to remove the strain on your leg muscles

## Taking care of your vision

Long viewing hours, wearing incorrect glasses or contact lenses, glare, excessive room lighting, poorly focused screens, very small typefaces and low-contrast displays could stress your eyes. The following sections provide suggestions on how to reduce eyestrain.

### Eyes

- It is recommended to rest your eyes for 10 minutes every 40 minutes.
- Give your eyes regular breaks by looking away from the monitor and focusing on a distant point.
- Blink frequently to keep your eyes from drying out.

### Display

- Keep your display clean.
- Keep your head at a higher level than the top edge of the display so your eyes point downward when looking at the middle of the display.
- Adjust the display brightness and/or contrast to a comfortable level for enhanced text readability and graphics clarity.
- Eliminate glare and reflections by:
  - placing your display in such a way that the side faces the window or any light source
  - minimizing room light by using drapes, shades or blinds
  - using a task light
  - changing the display's viewing angle
  - using a glare-reduction filter
  - using a display visor, such as a piece of cardboard extended from the display's top front edge
- Avoid adjusting your display to an awkward viewing angle.
- Avoid looking at bright light sources, such as open windows, for extended periods of time.

## Developing good work habits

Develop the following work habits to make your computer use more relaxing and productive:

- Take short breaks regularly and often.
- Perform some stretching exercises.
- Breathe fresh air as often as possible.
- Exercise regularly and maintain a healthy body.





## Declaration of Conformity

We,

**Acer Incorporated**

8F, 88, Sec. 1, Xintai 5th Rd., Xizhi, New Taipei City 221

And,

**Acer Italy s.r.l.**

Viale delle Industrie 1/A, 20044 Arese (MI), Italy

Tel: +39-02-939-921 ,Fax: +39-02 9399-2913

www.acer.it

<b>Product:</b>	<b>LCD Monitor</b>
<b>Trade Name:</b>	<b>ACER</b>
<b>Model Number:</b>	<b>SH272U</b>
<b>SKU Number:</b>	<b>SH272U   xxxxxx;</b> <b>("x" = 0~9, a~z, A~Z, or blank)</b>

We, Acer Incorporated, hereby declare under our sole responsibility that the product described above is in conformity with the relevant Union harmonization legislations as below Directive and following harmonized standards and/or other relevant standards have been applied:

☒ **EMC Directive: 2014/30/EU**

☒ EN 55032:2015+ A11:2020 Class B

☒ EN IEC 61000-3-2:2019+A1:2021

☒ EN 55035:2017/A11:2020

☒ EN 61000-3-3:2013+A1:2019

☒ **LVD Directive: 2014/35/EU**

☒ EN IEC 62368-1:2020+A11:2020

☒ **RoHS Directive: 2011/65/EU**

☒ EN IEC 63000:2018

☒ **ErP Directive: 2009/125/EC**

☒ (EN)2019/2021; EN50564:2011

Year to begin affixing CE marking: 2023.

**RU Jan / Sr. Manager**  
**Acer Incorporated (New Taipei City)**

**Mar.07, 2023**

**Date**



**Acer America Corporation**  
333 West San Carlos St., San Jose  
Suite 1500  
CA 95110, U. S. A.  
Tel : 254-298-4000  
Fax : 254-298-4147  
[www.acer.com](http://www.acer.com)



## Federal Communications Commission Supplier's Declaration of Conformity

This device complies with Part 15 of the FCC Rules. Operation is subject to the following two conditions: (1) this device may not cause harmful interference, and (2) this device must accept any interference received, including interference that may cause undesired operation.

The following local Manufacturer /Importer is responsible for this declaration:

<b>Product:</b>	<b>LCD Monitor</b>
<b>Model Number:</b>	<b>SH272U</b>
<b>SKU Number:</b>	<b>SH272U xxxxxx</b> <b>("x" = 0~9, a ~ z, A ~ Z, or blank)</b>
<b>Name of Responsible Party:</b>	<b>Acer America Corporation</b>
<b>Address of Responsible Party:</b>	<b>333 West San Carlos St.</b> <b>Suite 1500</b> <b>San Jose, CA 95110</b> <b>U. S. A.</b>
<b>Contact Person:</b>	<b>Acer Representative</b>
<b>Phone No.:</b>	<b>254-298-4000</b>
<b>Fax No.:</b>	<b>254-298-4147</b>

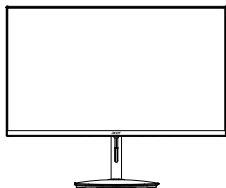
# Contents

<b>Information for your safety and comfort</b>	<b>3</b>
Safety instructions	3
Special notes on LCD monitors	3
Cleaning your monitor	3
Accessibility	4
Safe listening	4
Warnings	4
Using electrical power	4
Product servicing	5
Potentially explosive environments	6
Additional safety information	6
IT Equipment Recycling Information	6
Disposal instructions	6
LCD pixel statement	7
Tips and information for comfortable use	7
Finding your comfort zone	7
Taking care of your vision	8
Developing good work habits	8
CE declaration of conformity	9
Radiation Exposure Statement	9
USA, Canada	9
FCC/ISED/CE-RED Caution	9
Radiation Exposure Statement	9
Déclaration d'exposition aux radiations	9
Federal Communications Commission	10
Supplier's Declaration of Conformity	10
<b>Unpacking</b>	<b>12</b>
<b>Connecting the adapter and AC Power cord</b>	<b>15</b>
<b>Power saving</b>	<b>16</b>
Display Data Channel (DDC)	16
19-pin color display signal cable	16
20-pin color display signal cable	17
24-pin USB 3.1 Type C cable	18
<b>Standard timing table</b>	<b>19</b>
<b>Installation</b>	<b>20</b>
<b>Troubleshooting</b>	<b>30</b>
HDMI/DP Mode (Optional)	30

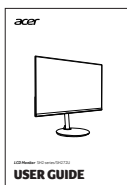
# Unpacking

Please check that the following items are present when you unpack the box, and save the packing materials in case you need to ship or transport the monitor in the future.

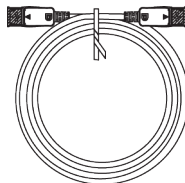
LCD monitor



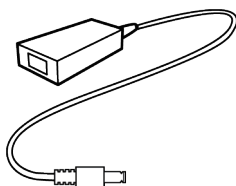
Quick start guide



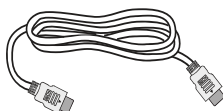
DP Cable  
(Optional)



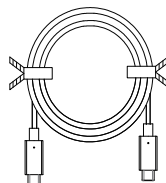
AC Adapter



HDMI cable  
(Optional)



Type-C cable  
(Optional)

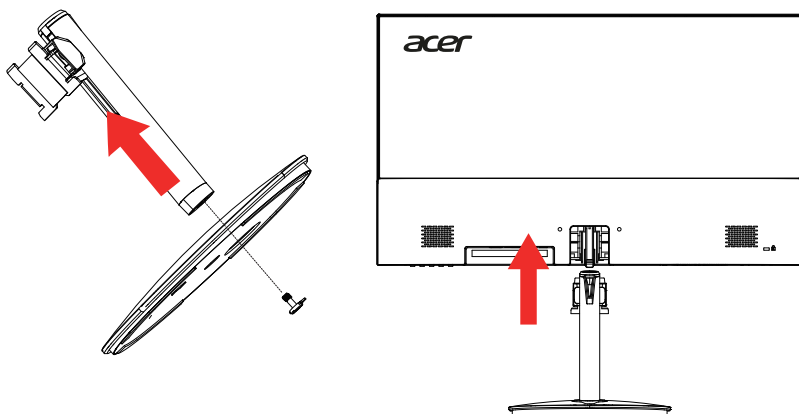


AC Power cord  
(Optional)



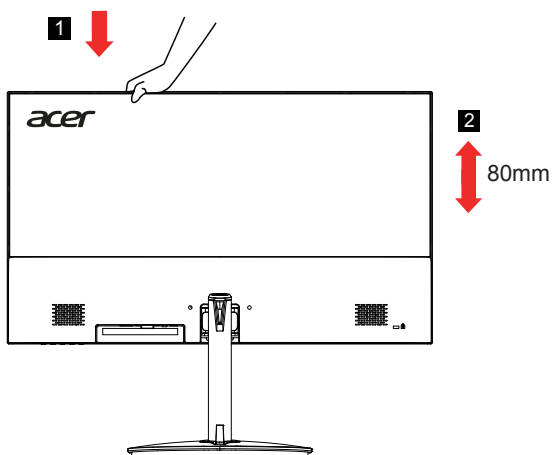
- **Attaching the Base**

Note: Remove the monitor and monitor base from its packaging. Carefully place the monitor face-down on a stable surface -- use a cloth to avoid scratching the screen.



- **Height Adjustment**

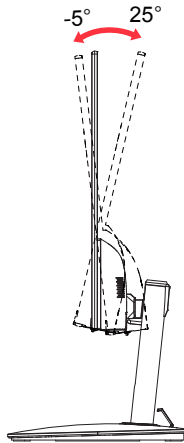
After pressing the top of the monitor then you can adjust the height of the monitor.



- **Tilt**

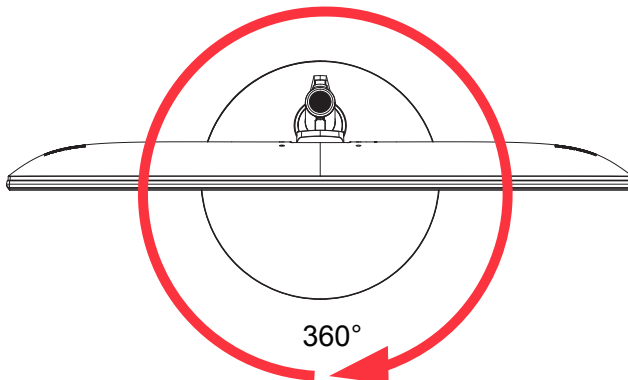
Please see the illustration below for an example of the tilt range.

Only at the highest point can 25 degrees of recline be offered for the angle of elevation.



- **Swivel**

With the built-in pedestal, you can swivel the monitor for the most comfortable viewing angle.



# Connecting the adapter and AC Power cord

- Check first to make sure that the power cord you use is the correct type required for your area.
- The monitor has a universal power supply that allows operation in either 100/120 V AC or 220/240 V AC voltage area. No user-adjustment is required.
- Plug one end of the AC power cord to the Adapter, and plug the other end into an AC outlet.
- For units using 120 V AC:  
Use a UL-listed cord set, type SVT wire and plug rated 10 A/125 V.
- For units using 220/240 V AC:  
Use a cord set consisting of H05VV-F cord and plug rated 10 A/250 V. The cord set should have the appropriate safety approvals for the country in which the equipment will be installed.

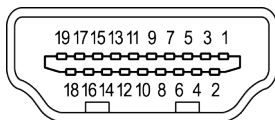
## Power saving

The monitor will be driven into "Power Saving" mode by the control signal from the display controller, as indicated by the amber-color power LED.

State	LED Light
ON	Blue
Power Saving Mode	Red

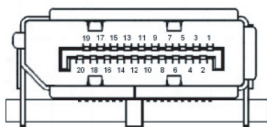
The power saving states will be kept until a control signal has been detected or the keyboard or mouse is activated. The recovery time from Active OFF state back to ON state is around 3 seconds.

## 19-pin color display signal cable



PIN No.	Description	PIN No.	Description
1	TMDS Data2+	2	TMDS Data2 Shield
3	TMDS Data2-	4	TMDS Data1+
5	TMDS Data1 Shield	6	TMDS Data1-
7	TMDS Data0+	8	TMDS Data0 Shield
9	TMDS Data0-	10	TMDS Clock+
11	TMDS Clock Shield	12	TMDS Clock-
13	CEC	14	Reserved (N.C. on device)
15	SCL	16	SDA
17	DDC/CEC Ground	18	+5V Power
19	Hot Plug Detect		

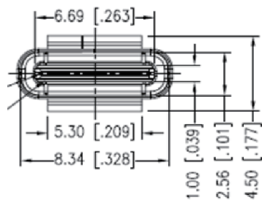
## 20-pin color display signal cable



PIN No.	Description	PIN No.	Description
1	ML_Lane 0+	2	GND
3	ML_Lane 0-	4	ML_Lane 1+
5	GND	6	ML_Lane 1-
7	ML_Lane 2+	8	GND
9	ML_Lane 2-	10	ML_Lane 3+
11	GND	12	ML_Lane 3-
13	KONFIG1	14	CONFIG2
15	AUX CH+	16	GND
17	AUX CH-	18	Hot Plug
19	Return	20	DP_PWR



## 24-pin USB 3.1 Type C cable



PIN No.	Signal Assignment	PIN No.	Signal Assignment
A1	GND	B12	GND
A2	SSTXp1	B11	SSTXp1
A3	SSTXn1	B10	SSTXn1
A4	VBUS	B9	VBUS
A5	CC1	B8	CC1
A6	Dp1	B7	Dp1
A7	Dn1	B6	Dn1
A8	SBU1	B5	SBU1
A9	VBUS	B4	VBUS
A10	SSTXn2	B3	SSTXn2
A11	SSTXp2	B2	SSTXp2
A12	GND	B1	GND

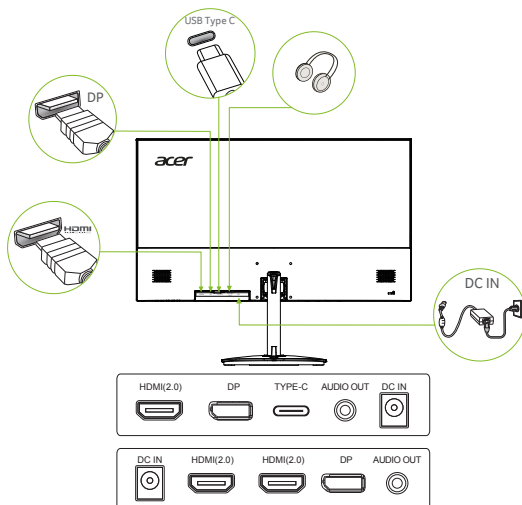
\* only for certain models

## Standard timing table

VESA MODE			
MODE	Resolution		
1	VGA	640 x 480	60Hz
2	VGA	640 x 480	75Hz
3	VESA	720 x 400	70Hz
4	VGA	720 x 480	60Hz
5	SVGA	800 x 600	60Hz
6	SVGA	800 x 600	75Hz
7	XGA	1024 x 768	60Hz
8	XGA	1024 x 768	75Hz
9	VESA	1152 x 864	75Hz
10	VESA	1280 x 720	60Hz
11	XGA+	1280 x 800	60Hz
12	SVGA	1280 x 1024	75Hz
13	WXGA+	1440 x 900	60Hz
14	WSXGA+	1680 x 1050	60Hz
15	FHD	1920 x 1080	60Hz
16	QHD	2560 x 1440	60Hz
17	QHD	2560 x 1440	75Hz
18	QHD	2560 x 1440	100Hz (Recommended resolution)

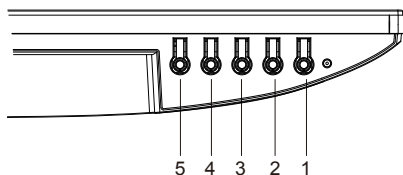
# Installation

1. Turn off your computer and unplug your computer's power cord.
2. Connect the signal cable to the HDMI (optional) and /or DP (optional) and /or Type-C (optional) input socket of the monitor, and the HDMI (optional) and /or DP (optional) and /or Type-C (optional) output socket of the graphics card on the computer.
5. Insert the monitor power cable into the power port at the back of the monitor.
6. Plug the power cords of your computer and your monitor into a nearby electrical outlet.



Note: Audio output is only for audio output model. Please check user manual for more instruction.

# User Controls



NO.	Icon	Item	Description
1		Power button/indicator	Turns the monitor on/off. Blue indicates power on. Red indicates standby/ power saving mode.
2		OSD function	a. Press to view Main page. Press again to enter next function in the Function Menu. b. When the Function Menu is active, press this key selected function.
3		Input	a. Press to view Main page. Press again to enter Input select function. b. When the function menu is active, press this selected button or move to the next function.
4		Brightness	a. Press to view Main page. Press again to enter brightness adjustment function. b. When the Function Menu is active, press this button selected or move to the previous function.
5		Mode	a. Press to view Main page. Press again to enter mode adjustment function. b. When the Function Menu is active, press to exit current Menu.

**Note:** Acer monitor is purposed for video and visual display of information obtained from electronic devices.

## AMD FREESYNC :

It can allow a AMD FREESYNC supported graphics source to dynamically adjust display refresh rate based on typical content frame rates for power efficient, virtually stutter free and low-latency display update.


## Using the Shortcut Menu



**Note:** The following content is for general reference only. Actual product specifications may vary.

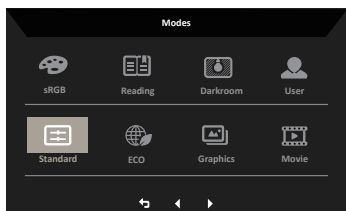
The OSD (onscreen display) can be used to adjust the settings of your LCD monitor. Press the MENU key to open the OSD. You can use the OSD to adjust the picture quality, OSD position and general settings. For advanced settings, please refer to following page:

### Main page

	<ol style="list-style-type: none"><li>1. Hot Key 1 Modes Hot Key</li><li>2. Hot Key 2 Brightness</li><li>3. Input Switch Hot Key</li><li>4. Main Menu</li></ol>
---	---

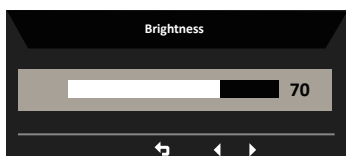
### Hot key 1 (default: Standard mode)

To choose scenario mode(sRGB,Reading,Darkroom,User, Standard, ECO, Graphics, Movie)



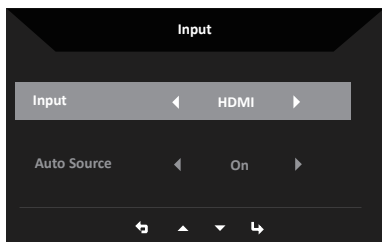
### Hot key 2 (default: Brightness)

Open the Brightness control and select your preferred brightness setting . When you are done, press the back button to quit current page and store.



## Selecting the input

Open the Input control and select DP, HDMI, TYPE-C((Only Type-C Model)). When you are done, press the back button to exit current page and store.



## Main menu

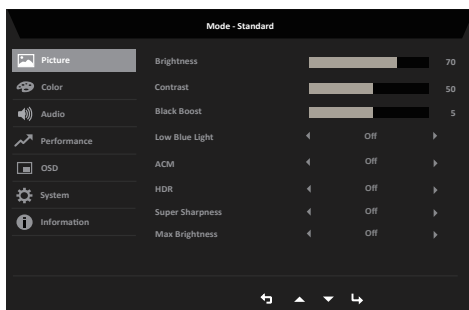
1. Press any key to open the OSD.
2. Press Menu key to select Picture from the OSD.

Modes hot key: to change mode hot key menu.

Brightness hot key: to adjust brightness.

Input source hot key: to select input source.

## Picture



1. Press the MENU key to open the OSD.
2. Press up or down button to select Picture from the OSD. Then press enter button to enter it.
3. Toggle to the left or right to adjust the sliding scales.
4. The Picture menu can be used to adjust the Brightness, Contrast, Black Boost, Low Blue Light, ACM, HDR, Super Sharpness, Max Brightness.

5. Brightness: Adjust the brightness from 0 to 100.



**Note:** Adjusts the balance between light and dark shades.

6. Contrast: Adjust the contrast from 0 to 100.



**Note:** Sets the degree of difference between light and dark areas.

7. Black Boost: Adjust the black level from 0 to 10. Enhances shadows by increasing the brightness without changing lighter shades.
8. Low Blue Light: Filters out blue light to protect your eyes by adjusting how much blue light is shown -- Standard, Level 1, Level 2, Level 3, Level 4.
9. ACM: Turn ACM on or off.  
**Note:** Set to "On", will be based on the current screen to dynamic contrast adjustment.
10. HDR: can control off, auto, HDR-10 the default is off, set to auto will automatically detect and deal with HDR signal.



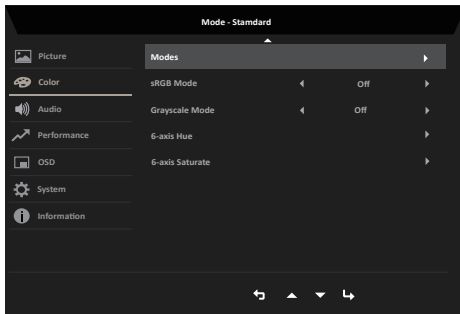
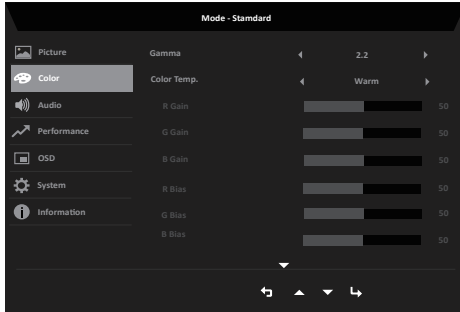
**Note:**

1. When HDR = Auto, the Modes will also be automatically set to "HDR".
11. Super Sharpness: Turn the Super Sharpness On or Off. Super Sharpness technology can simulate high-resolution images by boosting the pixel density of the original source to make images sharper and clearer.
12. Max Brightness: The default is Off, select On to compensate for higher brightness.



**Note:** Please be aware that energy consumption may increase with these settings.

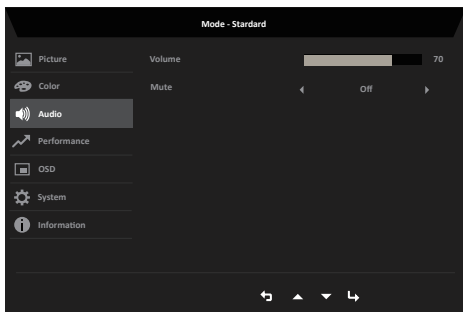
## Color



1. Press the MENU key to open the OSD.
2. Press up or down button to select Color from the OSD. Then press enter button to enter it.
3. Toggle to the left or right to adjust the sliding scales.
4. Gamma mode allows you to adjust the luminance tone. The default value is 2.2 (standard value for Windows).
5. Color temperature: Default is warm. You can choose Cool, Normal, Warm, Low Blue light or User.
6. Modes: To choose scenario mode.
7. sRGB: Default is off. You can turn sRGB on or off to better color match with peripheral devices, such as printers and digital cameras.
8. Grayscale Mode: To choose Grayscale mode.
9. 6-axis Hue: Adjust the red, green, blue, yellow, magenta and cyan hue.
10. 6-axis Saturate: Adjust the red, green, blue, yellow, magenta and cyan saturation.

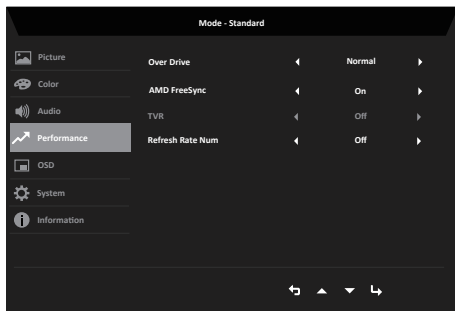


## Audio (Only Audio Model)



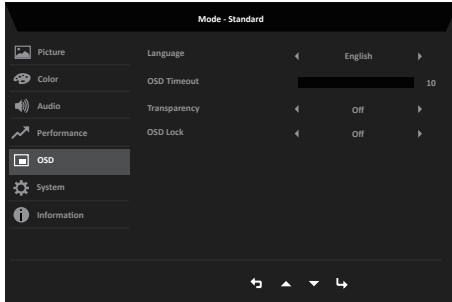
1. Press the MENU key to open the OSD.
2. Press up or down button to select Audio from the OSD. Then press enter button to enter it.
3. Toggle to the left or right to adjust the sliding scales.
4. Volume: Adjust the volume
5. Mute: To choose mute on/off .

## Performance



1. Press the MENU key to open the OSD.
2. Press up or down button to select Performance from the OSD. Then press enter button to enter it.
3. Toggle to the left or right to control functions.
4. Over Drive: Select Off, Normal or Extreme.
5. AMD FreeSync: To choose AMD FreeSync on/off.
6. TVR: To choose TVR off, Extreme, Normal.
7. Refresh rate num: Display the panel's current refresh rate on the screen.

## OSD



1. Press the MENU key to open the OSD.
2. Press up or down button to select OSD from the OSD. Then press enter button to enter it.
3. Toggle to the left or right to adjust the sliding scales.
4. Language: Set the OSD menu language.
5. OSD timeout: Adjust the delay before turning off the OSD menu.
6. Transparency: The transparency can be 0% (OFF), 20%, 40%, 60%, or 80%.
7. OSD Lock: To choose OSD lock on/off.

**Note:**

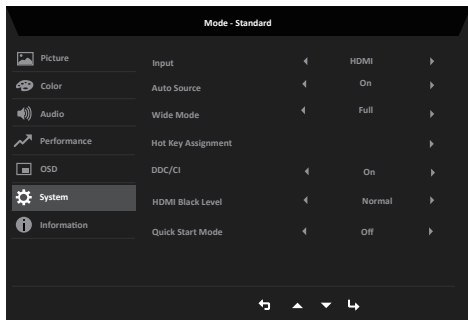
OSD Locked:


- Set the OSD Lock to "On" by the OSD option and press "Enter" to execute the All Key lock function.
- The "OSD Locked" message will be displayed in the middle of the screen.
- LED lights will be changed from blue light to red light.
- Press any Key screen to prompt "OSD Locked" message.

OSD Unlocked:

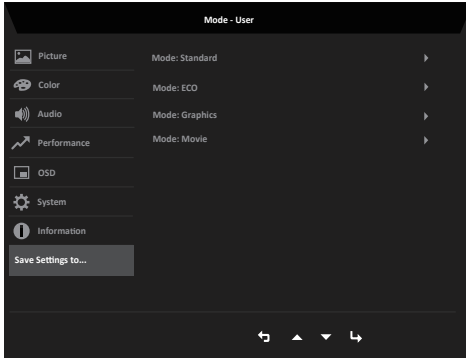
- In normal display condition to press any key except power key more than 3 seconds to trigger "OSD Unlock".
- The "OSD Unlock" message will be displayed in the middle of the screen.
- LED lights will be restored to blue light.

## System



1. Press the MENU key to open the OSD.
2. Press up or down button to select System from the OSD. Then press enter button to enter it.
3. Toggle to the left or right to control functions.
4. Input: Select the source from DP, HDMI, TYPE-C(Only Type-C Model).
5. Auto Source: The default is "On", which can support auto search for signal source in order.  
**Note:** Surround application must set Auto Source is "Off".
6. Wide mode: You can select which screen aspect you are using. The options are Aspect and Full.
7. Hot Key Assignment: Select the function of shortcut key 1(Modes,Volume (Only Audio Model), Gamma, Contrast, Low Blue Light, Over Drive,TVR. and shortcut keys 2 (Brightness, Volume (Only Audio Model), Gamma, Contrast, Low Blue Light, Over Drive,TVR .
8. DDC/CI: Allows the monitor settings to be set through the software on the PC.  
 **Note:** DDC/CI, short for Display Data Channel/Command Interface, which allows monitor controls to be sent via software.
9. HDMI Black level: Select to set HDMI black level.
10. Quick start mode: Select Off or On. Turn on to speed up boot speed.

## Save Setting to...(User mode only)



1. Press the MENU key to open the OSD.
2. Press up or down button to select "Save Setting to..." from the OSD. Then press enter button to enter it.
3. Save Setting to User mode: There are three user-defined profiles available. When you have decided what settings suit you, save them and system will be able to recall the settings in the future when you turn on User mode .

# Troubleshooting

Before sending your LCD monitor for servicing, please check the troubleshooting list below to see if you can self-diagnose the problem.

## HDMI/DP Mode (Optional)

Problem	LED status	Remedy
No picture visible	Blue	Using the OSD menu, adjust brightness and contrast to maximum or reset to their default setting.
	Off	Check the power switch.
		Check if the AC power cord is properly connected to the monitor.
	Red	Check if the video signal cable is properly connected at the back of monitor.  Check if the computer system is switched on and in power saving/standby mode.  If OSD Lock is On, the LED status set Red.

### Regulatory Compliance





Product Information for EU Energy