

ProArt

PA279CDV

USER GUIDE



First Edition

May 2026

Copyright © 2026 ASUSTeK COMPUTER INC. All Rights Reserved.

No part of this manual, including the products and software described in it, may be reproduced, transmitted, transcribed, stored in a retrieval system, or translated into any language in any form or by any means, except documentation kept by the purchaser for backup purposes, without the express written permission of ASUSTeK COMPUTER INC. ("ASUS").

Product warranty or service will not be extended if: (1) the product is repaired, modified or altered, unless such repair, modification or alteration is authorized in writing by ASUS; or (2) the serial number of the product is defaced or missing.

ASUS PROVIDES THIS MANUAL "AS IS" WITHOUT WARRANTY OF ANY KIND, EITHER EXPRESS OR IMPLIED, INCLUDING BUT NOT LIMITED TO THE IMPLIED WARRANTIES OR CONDITIONS OF MERCHANTABILITY OR FITNESS FOR A PARTICULAR PURPOSE. IN NO EVENT SHALL ASUS, ITS DIRECTORS, OFFICERS, EMPLOYEES OR AGENTS BE LIABLE FOR ANY INDIRECT, SPECIAL, INCIDENTAL, OR CONSEQUENTIAL DAMAGES (INCLUDING DAMAGES FOR LOSS OF PROFITS, LOSS OF BUSINESS, LOSS OF USE OR DATA, INTERRUPTION OF BUSINESS AND THE LIKE), EVEN IF ASUS HAS BEEN ADVISED OF THE POSSIBILITY OF SUCH DAMAGES ARISING FROM ANY DEFECT OR ERROR IN THIS MANUAL OR PRODUCT.

SPECIFICATIONS AND INFORMATION CONTAINED IN THIS MANUAL ARE FURNISHED FOR INFORMATIONAL USE ONLY, AND ARE SUBJECT TO CHANGE AT ANY TIME WITHOUT NOTICE, AND SHOULD NOT BE CONSTRUED AS A COMMITMENT BY ASUS. ASUS ASSUMES NO RESPONSIBILITY OR LIABILITY FOR ANY ERRORS OR INACCURACIES THAT MAY APPEAR IN THIS MANUAL, INCLUDING THE PRODUCTS AND SOFTWARE DESCRIBED IN IT.

Products and corporate names appearing in this manual may or may not be registered trademarks or copyrights of their respective companies, and are used only for identification or explanation and to the owners' benefit, without intent to infringe.

Contents

Contents	iii
Notices.....	iv
TCO certified	vi
Safety information	vii
Care & Cleaning.....	viii
Takeback Services.....	ix
Product information for EU energy label.....	ix
Chapter 1: Product introduction	
1.1 Welcome!	1-1
1.2 Package contents.....	1-1
1.3 Monitor introduction	1-2
1.3.1 Front view	1-2
1.3.2 Back view	1-4
1.3.3 QuickFit Plus Function	1-5
1.3.4 Other Function(s)	1-8
Chapter 2: Setup	
2.1 Assembling the monitor arm/base	2-1
2.2 Detaching the arm/base (for VESA wall mount).....	2-2
2.3 Adjusting the monitor.....	2-3
2.4 Connecting the cables.....	2-4
2.5 Turning on the monitor.....	2-5
Chapter 3: General instructions	
3.1 OSD (On-Screen Display) menu	3-1
3.1.1 How to reconfigure.....	3-1
3.1.2 OSD function introduction.....	3-2
3.2 Specifications summary.....	3-16
3.3 Outline dimensions.....	3-18
3.4 Troubleshooting (FAQ).....	3-19
3.5 Supported operating modes	3-20

Notices

Federal Communications Commission Statement

This device complies with Part 15 of the FCC Rules. Operation is subject to the following two conditions:

- This device may not cause harmful interference, and
- This device must accept any interference received including interference that may cause undesired operation.

This equipment has been tested and found to comply with the limits for a Class B digital device, pursuant to Part 15 of the FCC Rules. These limits are designed to provide reasonable protection against harmful interference in a residential installation. This equipment generates, uses and can radiate radio frequency energy and, if not installed and used in accordance with the instructions, may cause harmful interference to radio communications. However, there is no guarantee that interference will not occur in a particular installation. If this equipment does cause harmful interference to radio or television reception, which can be determined by turning the equipment off and on, the user is encouraged to try to correct the interference by one or more of the following measures:

- Reorient or relocate the receiving antenna.
- Increase the separation between the equipment and receiver.
- Connect the equipment into an outlet on a circuit different from that to which the receiver is connected.
- Consult the dealer or an experienced radio/TV technician for help.



The use of shielded cables for connection of the monitor to the graphics card is required to assure compliance with FCC regulations. Changes or modifications to this unit not expressly approved by the party responsible for compliance could void the user's authority to operate this equipment.

ENERGY STAR complied product



ENERGY STAR is a joint program of the U.S. Environmental Protection Agency and the U.S. Department of Energy helping us all save money and protect the environment through energy efficient products and practices.

All ASUS products with the ENERGY STAR logo comply with the ENERGY STAR standard, and the power management feature is enabled by default. The monitor and computer are automatically set to sleep after 10 and 30 minutes of user inactivity. To wake your computer, click the mouse or press any key on the keyboard. Please visit <http://www.energystar.gov/powermanagement> for detail information on power management and its benefits to the environment. In addition, please visit <http://www.energystar.gov> for detail information on the ENERGY STAR joint program.



NOTE: Energy Star is NOT supported on FreeDOS and Linux-based operating system.

Canadian Department of Communications Statement

This digital apparatus does not exceed the Class B limits for radio noise emissions from digital apparatus set out in the Radio Interference Regulations of the Canadian Department of Communications.

This class B digital apparatus complies with Canadian ICES-003.

This Class B digital apparatus meets all requirements of the Canadian Interference - Causing Equipment Regulations.

Cet appareil numérique de la classe B respecte toutes les exigences du Règlement sur le matériel brouiller du Canada.



Hardware Low Blue Light compliance

The Monitor use Low Blue Light panel and compliance with TUV Rheinland (Hardware Solution) at factory reset/default setting model (Preset mode: Standard).

Decreases the blue light emitted from the display to reduce the risk of blue light exposure to your eyes.

- Place the screen 20 - 28 inches [50 - 70 cm] away from your eyes and a little below eye level.
- Consciously blinking the eyes every now and then will help to reduce eye strain after extended screen time.
- Take breaks for 20 minutes every 2 hours.
- Look away from the screen and gaze at a distant object for at least 20 seconds during breaks.
- Make stretches to relieve body fatigue or pain during breaks.

Flicker-Free technology

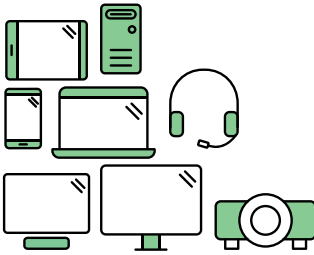
The Monitor adopts Flicker-Free technology, which clears the eye visible flicker, brings comfort viewing experience and preventing users suffer from eye strain and fatigue.

TCO certified

A third-party certification according to ISO 14024



Toward sustainable IT products



Say hello to a more sustainable product

IT products are associated with a wide range of sustainability risks throughout their life cycle. Human rights violations are common in the factories. Harmful substances are used both in products and their manufacture. Products can often have a short lifespan because of poor ergonomics, low quality and when they are not able to be repaired or upgraded.

This product is a better choice. It meets all the criteria in TCO Certified, the world's most comprehensive sustainability certification for IT products. Thank you for making a responsible product choice, that help drive progress towards a more sustainable future!

Criteria in TCO Certified have a life-cycle perspective and balance environmental and social responsibility. Conformity is verified by independent and approved verifiers that specialize in IT products, social responsibility or other sustainability issues. Verification is done both before and after the certificate is issued, covering the entire validity period. The process also includes ensuring that corrective actions are implemented in all cases of factory non-conformities. And last but not least, to make sure that the certification and independent verification is accurate, both TCO Certified and the verifiers are reviewed regularly.

Want to know more?

Read information about TCO Certified, full criteria documents, news and updates at [tcocertified.com](https://www.tcocertified.com). On the website you'll also find our Product Finder, which presents a complete, searchable listing of certified products.

Safety information

- Before setting up the monitor, carefully read all the documentation that came with the package.
- To prevent fire or shock hazard, never expose the monitor to rain or moisture.
- Never try to open the monitor cabinet. The dangerous high voltages inside the monitor may result in serious physical injury.
- If the power supply is broken, do not try to fix it by yourself. Contact a qualified service technician or your retailer.
- Before using the product, make sure all cables are correctly connected and the power cables are not damaged. If you detect any damage, contact your dealer immediately.
- Slots and openings on the back or top of the cabinet are provided for ventilation. Do not block these slots. Never place this product near or over a radiator or heat source unless proper ventilation is provided.
- The monitor should be operated only from the type of power source indicated on the label. If you are not sure of the type of power supply to your home, consult your dealer or local power company.
- Use the appropriate power plug which complies with your local power standard.
- Do not overload power strips and extension cords. Overloading can result in fire or electric shock.
- Avoid dust, humidity, and temperature extremes. Do not place the monitor in any area where it may become wet. Place the monitor on a stable surface.
- Unplug the unit during a lightning storm or if it will not be used for a long period of time. This will protect the monitor from damage due to power surges.
- Never push objects or spill liquid of any kind into the slots on the monitor cabinet.
- To ensure satisfactory operation, use the monitor only with UL listed computers which have appropriate configured receptacles marked between 100-240V AC.
- By means of a power cord connected to a socket-outlet with earthing connection.
- If you encounter technical problems with the monitor, contact a qualified service technician or your retailer.
- Adjustment of the volume control as well as the equalizer to other settings than the center position may increase the ear-/headphones output voltage and therefore the sound pressure level.



This symbol of the crossed out wheeled bin indicates that the product (electrical, electronic equipment, and mercury-containing button cell battery) should not be placed in municipal waste. Please check local regulations for disposal of electronic products.

AEEE yönetmeliğine uygundur

Care & Cleaning

- Before you lift or reposition your monitor, it is better to disconnect the cables and power cord. Follow the correct lifting techniques when positioning the monitor. When lifting or carrying the monitor, grasp the edges of the monitor. Do not lift the display by the stand or the cord.
- Cleaning. Turn your monitor off and unplug the power cord. Clean the monitor surface with a lint-free, non-abrasive cloth. Stubborn stains may be removed with a cloth dampened with water.
- Avoid using a cleaner containing alcohol or acetone. Use a cleaner intended for use with the monitor. Never spray cleaner directly on the screen, as it may drip inside the monitor and cause an electric shock.

The following symptoms are normal with the monitor:

- You may find slightly uneven brightness on the screen depending on the desktop pattern you use.
- When the same image is displayed for hours, an afterimage of the previous screen may remain after switching the image. The screen will recover slowly or you can turn off the Power Switch for hours.
- When the screen becomes black or flashes, or cannot work anymore, contact your dealer or service center to fix it. Do not repair the screen by yourself!

Conventions used in this guide



WARNING: Information to prevent injury to yourself when trying to complete a task.



CAUTION: Information to prevent damage to the components when trying to complete a task.



IMPORTANT: Information that you **MUST** follow to complete a task.



NOTE: Tips and additional information to aid in completing a task.

Where to find more information

Refer to the following sources for additional information and for product and software updates.

1. ASUS websites

The ASUS websites worldwide provide updated information on ASUS hardware and software products. Refer to <http://www.asus.com>

2. Optional documentation

Your product package may include optional documentation that may have been added by your dealer. These documents are not part of the standard package.

Takeback Services

ASUS recycling and takeback programs come from our commitment to the highest standards for protecting our environment. We believe in providing solutions for our customers to be able to responsibly recycle our products, batteries and other components as well as the packaging materials.

Please go to <http://csr.asus.com/english/Takeback.htm> for detail recycling information in different region.

Product information for EU energy label



PA279CDV

1.1 Welcome!

Thank you for purchasing the ASUS® OLED monitor!

The latest widescreen OLED monitor from ASUS provides a broader, brighter and crystal-clear display, plus a host of features that enhance your viewing experience.

With these features, you can enjoy the convenience and delightful visual experience that the monitor brings to you!

1.2 Package contents

Check your package for the following items:

- ✓ OLED monitor
- ✓ Monitor stand/base
- ✓ Quick start guide
- ✓ Warranty card
- ✓ Power cord
- ✓ DisplayPort cable
- ✓ USB C to C cable
- ✓ Color calibration testing report



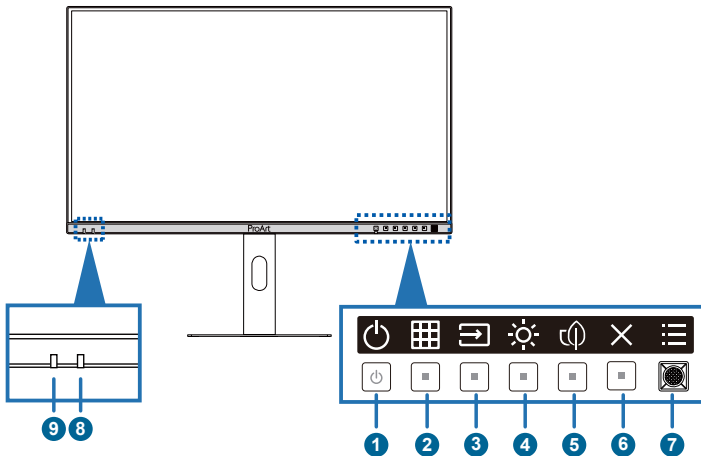
If any of the above items is damaged or missing, contact your retailer immediately.



If you need to replace the power cord or the connection cable(s), please contact ASUS customer service.

1.3 Monitor introduction




1.3.1 Front view



1. Power button/power indicator:
 - Turns the monitor on/off. Press and hold this button for 0.6 seconds will shut down the monitor.
 - The color definition of the power indicator is as the below table.

Status	Description
White	On
Amber	Standby mode
Off	Off

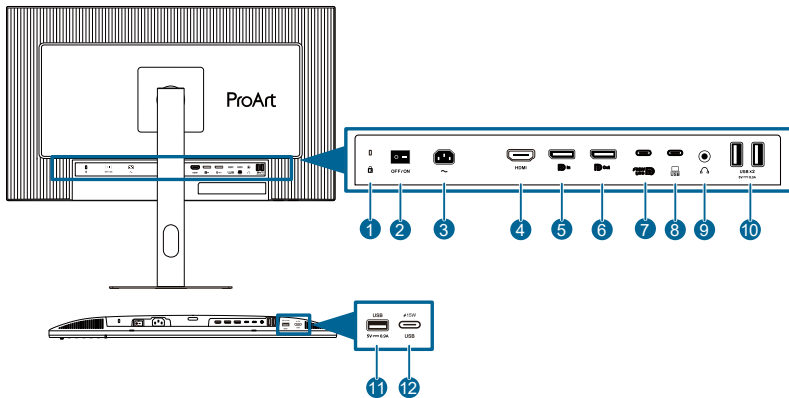
2. QuickFit Plus button:
 - Press this button to display the OSD menu when the OSD is off.
 - Selects the QuickFit Plus function.
3. Input button:
 - Press this button to display the OSD menu when the OSD is off.
 - Press this button to select input.
4. Shortcut 2:
 - Press this button to display the OSD menu when the OSD is off.
 - Default: Brightness hotkey
 - To change the hotkey function, go to the Shortcut > Shortcut 2 menu.

5.  Shortcut 1:
 - Press this button to display the OSD menu when the OSD is off.
 - Default: Energy Saving hotkey
 - To change the hotkey function, go to the Shortcut > Shortcut 1 menu.
6.  Exit button:
 - Press this button to display the OSD menu when the OSD is off.
 - Exits the OSD menu.
7.  Menu (5-way) button:
 - Press this button to display the OSD menu when the OSD is off. Press this button again to enter the OSD main menu.
 - Enacts the selected OSD menu items.
 - Increases/Decreases values or moves your selection up/down/left/right.
 - Push the 5-way button down for over 5 seconds to toggle the Key Lock function between on and off.
8. Light Sensor: This sensor is used to detect the change of ambient light.
9. Proximity Sensor
 - If the function is enabled and the system does not detect the presence of object within 30cm-90cm over the preset time, the system will automatically decrease brightness periodically.



-
- Recovery time would be within 2 seconds.
 - Detectable ability and distance are different according to the object and environment.
 - Please avoid placing objects in front of the sensor (between 30cm and 90cm), as it will cause the function of the sensor to fail (misjudging that someone is ahead).
-

1.3.2 Back view





- 1. Kensington lock:** This port connects a lock-and-cable apparatus for security purpose.
- 2. Power switch:** Press the switch to turn on/off power.
- 3. AC-IN port:** This port connects the power cord.
- 4. HDMI port:** This port is for connection with an HDMI compatible device.
- 5. DisplayPort in:** This port is for connection with a DisplayPort compatible device.
- 6. Daisy-Chain DisplayPort output:** This port allows you to connect multiple DisplayPort compatible monitors.
- 7. USB 3.2 Gen 2 Type-C (KVM Upstream 1):** This port is for connection with a USB upstream cable. The connection supports DP alt mode and USB power and data delivery(Maximum resolution: 3840 x 2160@ 120Hz).



This monitor is Super-Speed USB 3.2 Gen 1 compatible(5Gbps). The port offer 96W power delivery with output voltage of 5V/3A, 9V/3A, 12V/3A 15V/3A, 20V/4.8A.

- 8. USB 3.2 Gen 2 Type-C(KVM Upstream 2):** Connect the USB cable that comes with your display to the computer. Once this cable is connected, you can use the USB downstream connectors on the display.
- 9. Earphone jack:** This port is available when the video input has audio content.
- 10. USB 3.2 Gen 1 Type-A:** These ports are for connection with USB devices, such as USB keyboard/mouse, USB flash drive, etc.
- 11. USB 3.2 Gen 1 Type-A:** This port is for connection with USB devices, such as USB keyboard/mouse, USB flash drive, etc.
- 12. USB 3.2 Gen 1 Type-C:** This port is for connection with USB devices, such as USB keyboard/mouse, USB flash drive, etc.

1.3.3 QuickFit Plus Function

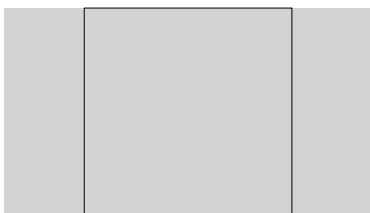
The QuickFit Plus function contains 4 types of patterns: (1) Safe Area (2) Center Marker (3) Customization (4) Ruler. To activate the patterns, press the  QuickFit Plus button. Use the  Menu (5-way) button to select a desired pattern. You can move the button up/down/left/right to change the pattern's position if needed.

Note that only **Customization** pattern can be adjusted its frame size according to your need, but may have limited range for moving left/right/up/down.

1. Safe Area

Facilitates designers and users to organize content and layout on one page and achieve a consistent look and feel.

The selections are:



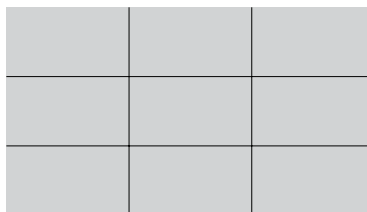
1:1



Action Safe



Title Safe

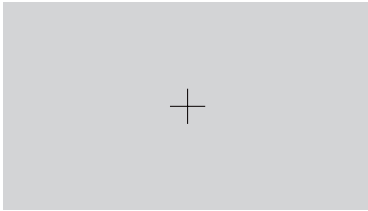


3 X 3

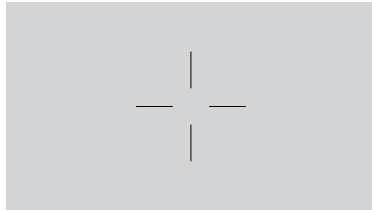
2. Center Marker

Selects the center marker type.

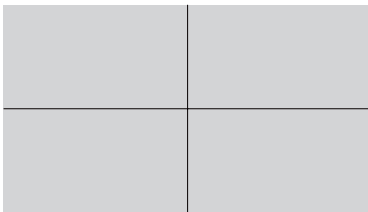
The selections are:



Type 1


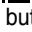


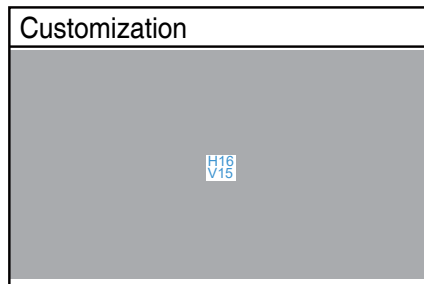
Type 2




Type 3

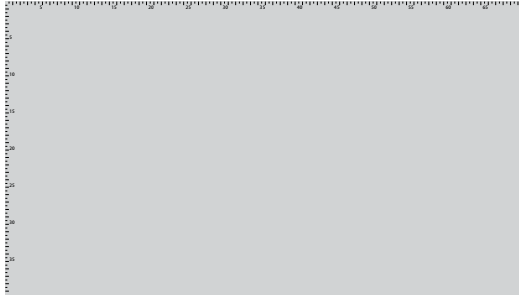
3. Customization

You can decide the frame size by moving the  Menu (5-way) button up/down/left/right. You can press the  Menu (5-way) button for longer than 3 seconds to switch the measurements between millimeter and inch.



4. Ruler

This pattern presents physical ruler on top and left side. You can press the  Menu (5-way) button for longer than 3 seconds to switch the measurements between metric and imperial.



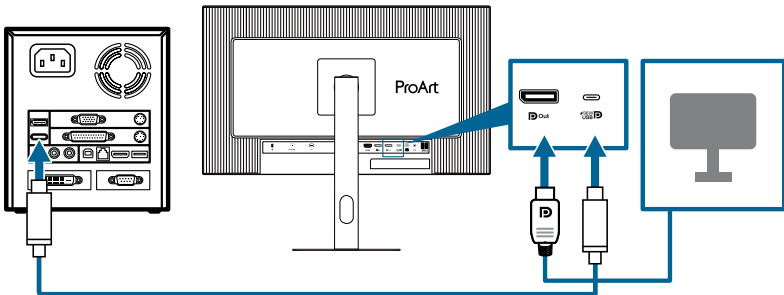
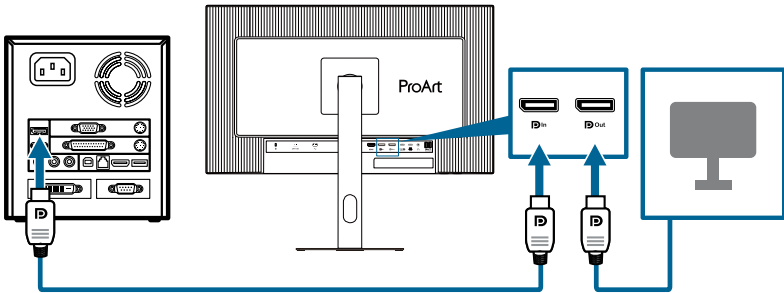
1.3.4 Other Function(s)

Daisy chaining (for selected models)

The monitor supports daisy chain on DisplayPort and USB Type-C. Daisy Chaining allows multiple monitors to be connected in series with the video signal being passed from the source to a monitor. In order to enable daisy chaining, please make sure the source supports Multi-Stream Transport (MST).



This function is only available when Power Saving is Normal Level. If you set Power Saving to Deep Level, all the connected monitors will display the same content at the same time (clone). Note: Input port will be fixed (no auto detection) when DP out cable is plugged.



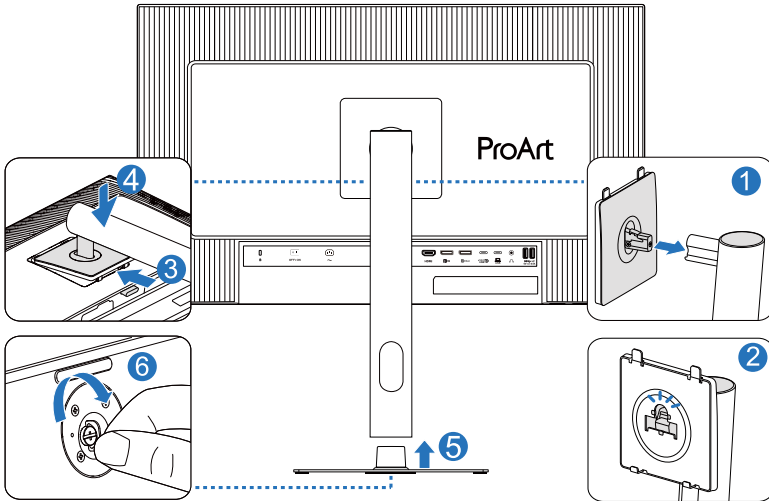
2.1 Assembling the monitor arm/base

To assemble the monitor base:

1. Attach the arm into the VESA cover.
2. With the sound "tick" that they complete assemble.
3. Have the front of the monitor face down on a table, slide the tabs on the arm into the slots on the VESA cover.
4. Press down the arm assembly to snap it into place.
5. Attach the base into the arm, making sure the tab on the arm fits into the groove on the base.
6. Fix the base to the arm by fastening the bundled screw.



We recommend that you cover the table surface with soft cloth to prevent damage to the monitor.



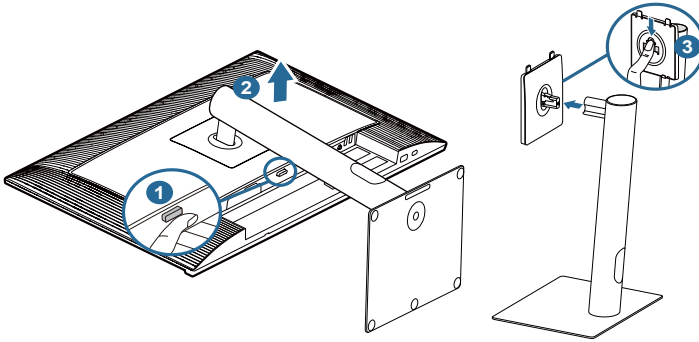
Base screw size: M6 x 16.2 mm.

2.2 Detaching the arm/base (for VESA wall mount)

The detachable arm/base of this monitor is specially designed for VESA wall mount.

To detach the arm/base.

1. Have the front of the monitor face down on a table.
2. Press the release button, and then detach the arm/base from the monitor.
3. Press and hold the middle button to remove the VESA.



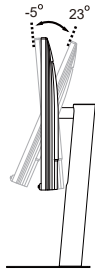
We recommend that you cover the table surface with soft cloth to prevent damage to the monitor.



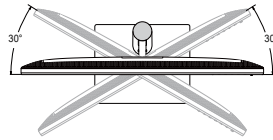
- The VESA wall mount kit (100 x 100 mm) is purchased separately.
 - Use only with UL/CSA/GS Listed Wall Mount Bracket with minimum weight/load bearing capacity of 5.93 kg (13.08 lb) (Screw size: M4 x 11 mm).
-

2.3 Adjusting the monitor

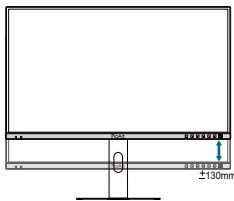
- For optimal viewing, we recommend that you look at the full face of the monitor, then adjust the monitor to the angle that is most comfortable for you.
- Hold the stand to prevent the monitor from falling when you change its angle.
- You can adjust the monitor's angle from $+23^{\circ}$ to -5° , $\pm 30^{\circ}$ swivel adjustment from either left or right, and it allows $\pm 90^{\circ}$ pivot adjustment. You can also adjust the monitor's height within ± 130 mm.



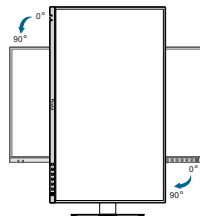
(Tilt)



(Swivel)



(Height adjustment)



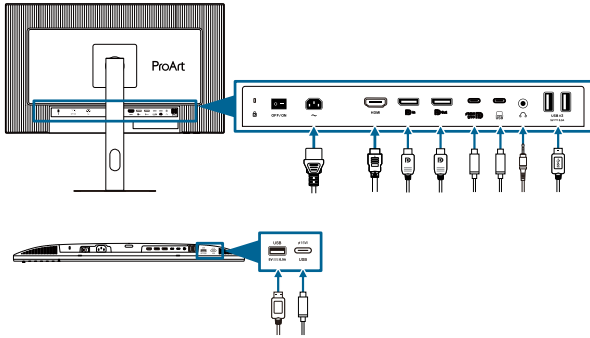
(Pivot)



It is normal that the monitor slightly shakes while you adjust the viewing angle.

2.4 Connecting the cables

Connect the cables as the following instructions:



- **To connect the power cord:** Connect one end of the power cord securely to the monitor's AC input port, the other end to a power outlet.
- **To connect the HDMI/DisplayPort/USB Type-C* cable:**
 - a. Plug one end of the HDMI/DisplayPort/USB Type-C* cable to the monitor's HDMI/DisplayPort/USB Type-C jack.
 - b. Connect the other end of the HDMI/DisplayPort/USB Type-C* cable to your device's HDMI/DisplayPort/USB Type-C jack.



It is suggested to use USB certified Type-C cable. If the signal source supports DP Alt mode, all video, audio and data signal can be transmitted.

- **To use the earphone:** connect the end with plug type to the monitor's earphone jack when an HDMI/DisplayPort/USB Type-C signal is fed.
- **To use the USB 3.2 Gen 1 ports:**
 - » Upstream: Use an USB Type-C cable and plug on end of the Type-C connector to the monitor's USB Type-C port as upstream and the other end to your computer's USB Type-C jack. Or use an USB Type-C to Type-A cable and plug the Type-C connector to the the monitor's USB Type-C as upstream and the Type-A connector to your computer's USB Type-A jack. Make sure your computer is installed with the Windows, macOS operating system. That will enable the USB ports on the monitor to work.
 - » Downstream: Use an USB cable to connect your device with the monitor's USB Type-A jack.





When these cables are connected, you can choose the desired signal from the **Input** item in the OSD menu.



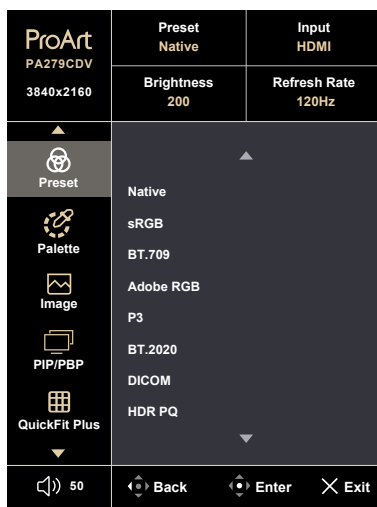
If you need to replace the power cord or the connection cable(s), please contact ASUS customer service.

2.5 Turning on the monitor

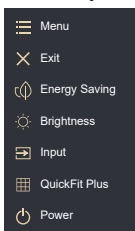
Press the power button . See page 1-2 for the location of the power button. The power indicator  lights up in white to show that the monitor is ON.

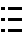

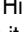
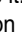
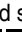
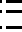


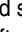
3.1 OSD (On-Screen Display) menu

3.1.1 How to reconfigure



1. Press any button to display the OSD menu.

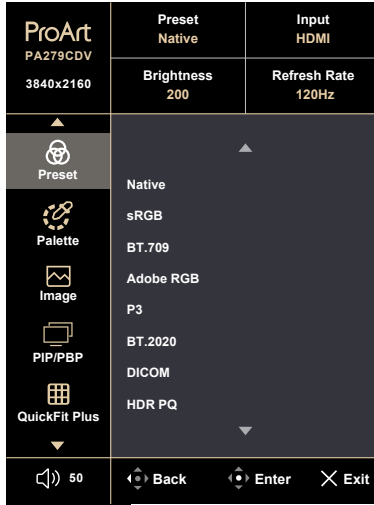


2. Press the  Menu (5-way) button to enter the OSD main menu.
3. Move the  Menu (5-way) button up/down/left/right to navigate through the functions. Highlight the desired function and press the  Menu (5-way) button to activate it. If the function selected has a sub-menu, move the  Menu (5-way) button up/down to navigate through the sub-menu functions. Highlight the desired sub-menu function and press the  Menu (5-way) button or move the  Menu (5-way) button to activate it.
4. Move the  Menu (5-way) button up/down to change the settings of the selected function.
5. To exit and save the OSD menu, press the  button or move the  Menu (5-way) left repeatedly until the OSD menu disappears. To adjust other functions, repeat steps 1-4.

3.1.2 OSD function introduction

1. Preset

This function contains 10 sub-functions you can select for your preference. Each mode has the Reset selection, allowing you to maintain your setting or return to the preset mode.



- **Native:** Best choice for document editing.



Energy star[®] cert done in native mode.

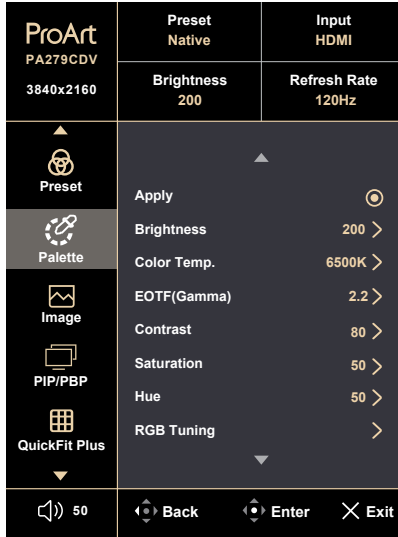
- **sRGB:** Compatible with sRGB color space, sRGB mode is the best choice for document editing.
- **BT.709:** Compatible with BT.709 color space.
- **Adobe RGB:** Compatible with Adobe RGB color space.
- **P3:** Compatible with P3 color space.
- **BT.2020:** Compatible with BT.2020 color space.
- **DICOM:** Compatible with DICOM standard, best choice for medical image checking.
- **HDR PQ:** High Dynamic Range. It contains three HDR modes and can be selected in OSD menu Palette> EOTF(Gamma).
- **User Mode 1/User Mode 2:** Allows you to make color adjustments in the Advanced Setting.

Below table shows the default configurations for each ProArt Preset mode:

Function	Native	sRGB	BT.709	Adobe RGB	P3	BT.2020	DICOM	HDR PQ	User Mode 1 User Mode 2
Color Temp.	6500K	Fixed (6500K)	6500K	Fixed (6500K)	6500K	6500K	6500K	Fixed (6500K)	6500K
Brightness	200nits	80nits	100 nits	160nits	48nits	100nits	200nits	250nits/ 400nits/ Max	200nits
Contrast	80	80	80	80	80	80	80	Fixed	80
Sharpness	Enable	Enable	Enable	Enable	Enable	Enable	Enable	Enable	Enable
Saturation	Enable	Disable	Enable	Enable	Enable	Enable	Enable	Fixed	Enable
Hue	Enable	Disable	Enable	Enable	Enable	Enable	Enable	Fixed	Enable
Palette	Enable	Enable	Enable	Enable	Enable	Enable	Enable	Enable (RGB Gain only)	Enable (RGB Gain only)
Black Level	Enable	Enable	Enable	Enable	Enable	Enable	Enable	Enable	Enable
Input Range	Enable	Enable	Enable	Enable	Enable	Enable	Enable	Enable	Enable
EOTF (Gamma)	2.2	2.2	2.4	2.2	2.2/2.6 only	2.4	Fixed	PQ Optimized PQ Clip PQ Basic	Enable
Ambient Brightness	Enable	Fixed (Off)	Enable	Enable	Enable	Enable	Enable	Fixed (Off)	Enable
Ambient Color Temperature	Enable	Fixed (Off)	Enable	Fixed	Enable	Enable	Enable	Fixed (Off)	Enable
Uniform Brightness	Enable (On)	Enable (On)	Enable (On)	Enable (On)	Enable (On)	Enable (On)	Enable (On)	Enable (Off)	Disable Grey out (Off)

2. Palette

Set a desired color setting from this menu.

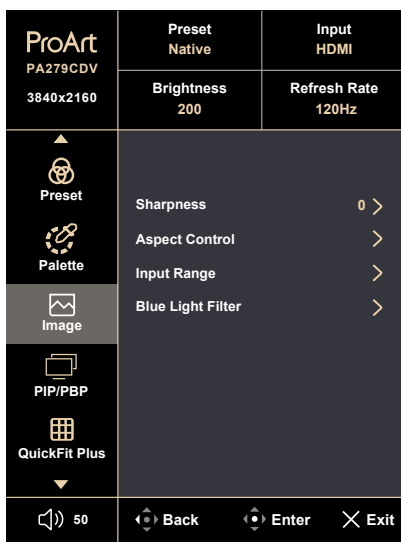


- **Apply:** Confirm the Preset change or any change of settings in this Palette menu.
- **Brightness:** The adjusting range is from 0 to 400.
- **Color Temp.:** Contains 6 modes including 9300K, M Model, 6500K, DCI (0.314,0.351), 5500K and 5000K. DCI (0.314,0.351) and M model only available for DCI-P3 Mode. When Preset mode P3 is chosen, only 6500K(default), DCI and M Model are available.
- **EOTF(Gamma):** Allows you to set the gamma to 1.8, 2.0, 2.2, 2.4 or 2.6. When HDR is enabled, **PQ Optimized**, **PQ Clip**, and **PQ Basic** are available.
 - * **PQ Optimized:** Delivers the optimized HDR performance of this display with as much accuracy as with ST2084 in terms of display luminance capability.
 - * **PQ Clip:** Preserves PQ curve till displaying maximum luminance with accuracy. ST2084 code value with higher than display maximum will be mapped to the maximum luminance.
 - * **PQ Basic:** Presents HDR performance of general HDR supported displays.
- **Contrast:** The adjusting range is from 0 to 100.

- **Saturation:** The adjusting range is from 0 to 100.
- **Hue:** Shifts the image color between green and purple.
- **RGB Tuning:**
 - * **Gain:** The adjusting range is from 0 to 400.
 - * **Offset:** The adjusting range is from 0 to 400.
- **Black Level:** To adjust the initialized 1st signal level of darkest gray level.
 - * **Signal:** The adjusting range is from 0 to 100.
- **Reset:** Reset current color setting to default configuration.

3. Image

Set the image related setting from this menu.



- **Sharpness:** The adjusting range is from 0 to 100.
- **Aspect Control:** Adjusts the aspect ratio to **Full**, **Dot to Dot** or **1:1 Ratio**.



To activate this function, you need to do the following: turn off **MediaSync** and **PIP/PBP**.

- **Input Range:** To map signal range with whole black to white presented range of display.
- **Blue Light Filter:** Adjust the strength of blue light filter.



To activate this function, you need to do the following: switch to Native preset and disable HDR on your device.



Please refer to the following to alleviate eye strains:

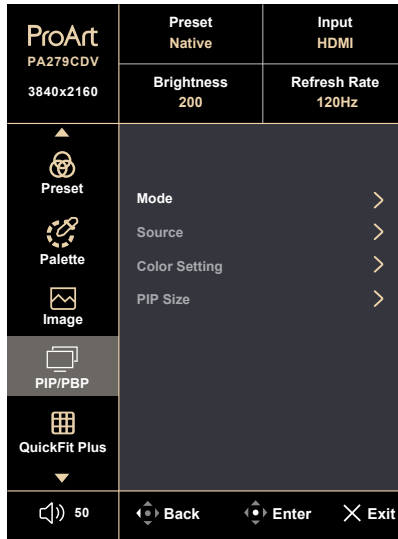
- Users should take some time away from the display if working for long hours. It is advised to take short breaks (at least 5 mins) after around 1 hour of continuous working at the computer. Taking short and frequent breaks is more effective than a single longer break.
 - To minimize eye strain and dryness in your eyes, users should rest the eye periodically by focusing on objects that are far away.
 - Eye exercises can help to reduce eye strain. Repeat these exercises often. If eye strain continues please consult a physician. Eye exercises:
(1) Repeating look up and down (2) Slowly roll your eyes (3) Move your eyes diagonal.
 - High energy blue light may lead to eye strain and AMD (Age-Related Macular Degeneration). Blue light Filter to reduce 70% (max.) harmful blue light to avoiding CVS (Computer Vision Syndrome).
-

4. PIP/PBP

The PIP/PBP menu allows you to open up another sub-window connected from another video source (when input source is below 60Hz) besides the main-window from your original video source.



To activate this function, you need to do the following: turn off **MediaSync/Uniform Brightness** and disable HDR on your device.



- **Mode:** Selects PIP, PBP function, or turn it off.



To scale both displays to full screen in PBP mode, set resolution settings for both as 1920 x 2160 in OS display settings. (And make sure that the scaling option is "Maintain Display Scaling" if you are using an Intel graphic card.)

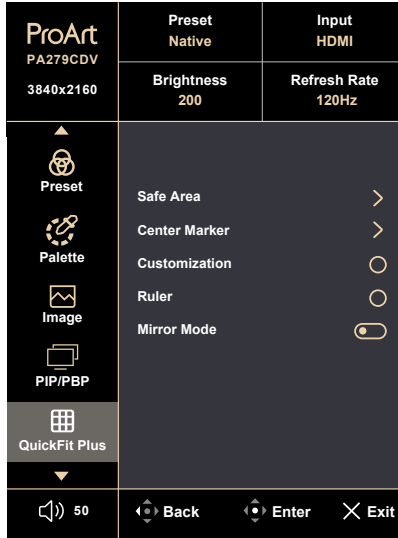
- **Source:** Selects the video input source from among **HDMI**, **DisplayPort**, and **USB Type-C**.
- **Color setting:** Select color Preset for Main and Sub windows.
- **PIP Size:** Adjusts the PIP size to **Small**, **Medium** or **Large** (Only available for the PIP mode).

5. QuickFit Plus

In this function, you can use different kinds of alignment patterns.



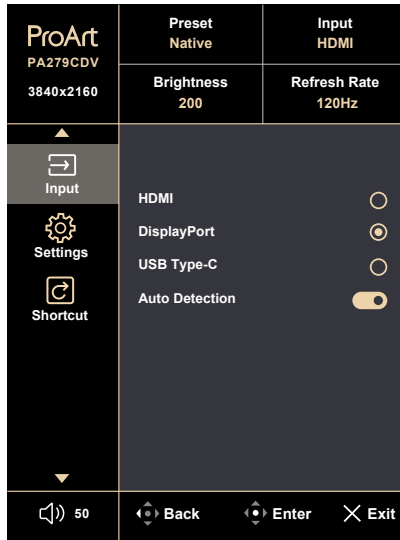
To activate this function, you need to do the following: turn off PIP/PBP on your device and restore your screen back to normal position (do not rotate).



- **Safe Area:** Facilitates designers and users to organize content and layout on one page and achieve a consistent look and feel. The selections are: **1:1, Action Safe, Title Safe, 3 x 3.**
- **Center Marker:** Adjusts the **Type 1, Type 2, Type 3.**
- **Customization:** You can decide the frame size by moving the **≡** Menu (5-way) button up/down/left/right. You can press the **≡** Menu (5-way) button for longer than 3 seconds to switch the measurements between millimeter and inch.
- **Ruler:** This pattern presents physical ruler on top and left side. You can press the **≡** Menu (5-way) button for longer than 3 seconds to switch the measurements between metric and imperial.
- **Mirror Mode:** Flip the image horizontally.

6. Input

In this function, you can select your desired input source.



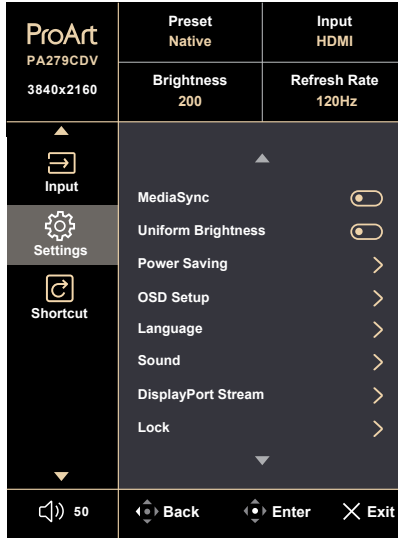
- **Auto Detection:** Automatically detects other active signals when current input signal is inactive.



To activate this function, you need to do the following: Set Settings/ Power Saving to Normal Level.

7. Settings

Allows you to adjust the system.



- **MediaSync:** Turn on VESA MediaSync support.
 - * For supported GPUs, minimum PC system and driver requirements, please contact the GPU manufactures.



To activate this function, you need to do the following: turn off PIP/PBP.

- **Uniform Brightness:** OLED display will adjust Max brightness by following with different white pattern size, to enable Uniform Brightness to fix display brightness without impact by OLED APL effect.



The default Uniform Brightness setting is On for SDR signals and Off for HDR signals, and it can be adjusted at any time.

- **Power Saving:** Specifies the power saving setting.
 - * **Normal Level:** Allows the USB downstream ports/USB Type-C ports to charge external devices when the monitor enters power saving mode.
 - * **Deep Level:** When connected to a computer, the upstream port enables USB downstream ports to charge devices. Auto Detection will be disabled when the monitor enters power-saving mode.

- **OSD Setup:**
 - * Adjusts the **OSD Timeout** from 10 to 120 seconds.
 - * Enables or disables the **DDC/CI** function.
 - * Adjusts the OSD background from **Opaque** to **Transparent**.
 - * Enables or disables the **Auto Rotation** function.



To activate OSD Auto Rotation, you need to do the following: turn off PIP/PBP.

- **Language:** There are 23 languages for your selection, including English, French, German, Italian, Spanish, Dutch, Portuguese, Russian, Czech, Croatian, Polish, Romanian, Hungarian, Turkish, Simplified Chinese, Traditional Chinese, Japanese, Korean, Thai, Indonesian, Persian, Ukrainian, Vietnamese.
- **Sound:**
 - * Adjusts **Volume** from 0 to 100.
 - * **Mute** or un-Mute the audio output.
 - * Select audio input from PIP/PBP **Source**.



To activate Source function, you need to do the following: turn on PIP/PBP.

- **DisplayPort Stream:** Compatibility with graphic card. Select **DisplayPort 1.2**, **DisplayPort 1.4** or **DisplayPort 1.4 + USB 3.2** by graphic card DP version.
- **Lock:**
 - * **Key:** To disable all function keys. Push the 5-way button down for over 5 seconds to cancel the key lock function.
 - * **Preset Setting:** To lock all parameters and disable (gray out) ProArt Pallet.
- **Power Indicator:** Turns the power LED indicator on/off.
- **Light Sync:** Adjusts backlight luminance and color temperature according to ambient light conditions. To enable Brightness in Light Sync, please set Proximity Sensor, Panel Protection, and Image Protection to **off** in Screen Saver.
 - * **Brightness:** Adjust backlight luminance dynamically according to ambient lighting.
 - * **Color Temperature:** Adjust color temperature dynamically according to ambient lighting.

- **Screen Saver:** Configures the screen saver related set up. You can improve the image quality issues related to image retention when the screen is on for a certain amount of time.
 - * **Proximity Sensor:** If the function is enabled and the system does not detect the presence of object within 30cm-90cm over the preset time, the system will automatically decrease brightness periodically.



-
- Recovery time would be within 2 seconds.
 - Detectable ability and distance are different according to the object and environment.
 - Please avoid placing objects in front of the sensor (between 30cm and 90cm), as it will cause the function of the sensor to fail (misjudging that someone is ahead).
-

- * **Panel Protection:** This function integrates several mechanisms from panel's intelligent patents to ensure the life. The intelligent patents are **Sensing Protection, Pixel Shift, Screen Saver, ISP** and **Off Sensing**. You can adjust slide bar to configure different levels, and some normal behaviors list as below will occur.
 1. The screen brightness will automatically decrease when there is no change on the screen.
 2. When the accumulated time is reached, Off Sensing will activate during Standby mode or when the monitor is powered off (DC Off). It helps correct any image issues that may occur after the monitor has been used for an extended period. The process takes approximately 6 minutes.
 3. When the monitor starts Off Sensing, you can interrupt Off Sensing by pressing any button on the monitor or by turning on the screen.



The setting of cumulative time for Off Sensing:

Off: 24 hours.

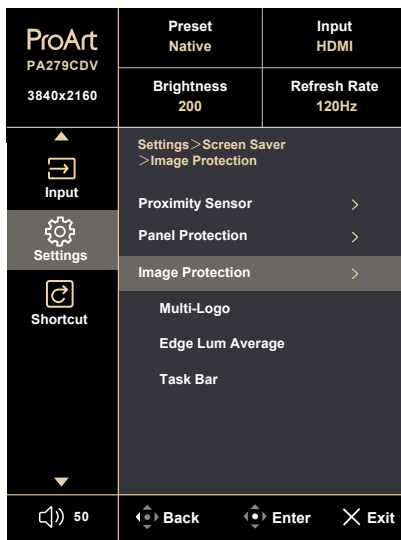
Level 1: 12 hours (Default).

Level 2: 6 hours.

ProArt PA279CDV 3840x2160	Preset Native	Input HDMI
	Brightness 200	Refresh Rate 120Hz
▲ Input	Settings > Screen Saver > Panel Protection	
⚙️ Settings	Proximity Sensor >	
🔄 Shortcut	Panel Protection >	
▼	Sensing Protection	
	Pixel Shift	
	Screen Saver	
	ISP	
	Off Sensing	
	Image Protection >	
🔊 50	⬅️ Back	⏎ Enter
		⏏ Exit



- * **Image Protection:** This function integrates several mechanisms from panel's intelligent patents to ensure the life. It can prevent panel from the potential picture quality issues when images contains **Multi-Logo**, **Edge Lum Average** and **Task Bar**. You can adjust slide bar to configure different levels.

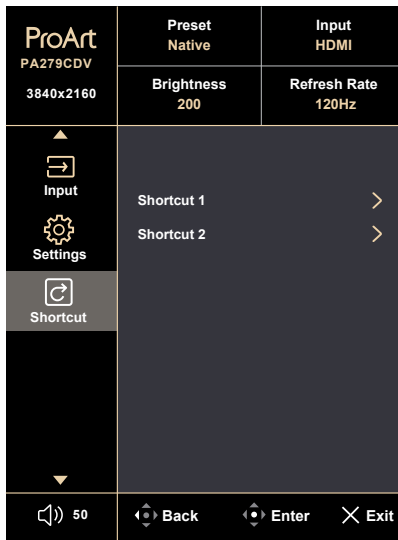


- **KVM:** Allows users to assign corresponding USB upstream ports to their HDMI/ DisplayPort connections. It follows the rules below.
 - * Upstream 1: USB Type-C port with DP Alt Mode.
 - * Upstream 2: USB Type-C port (Data delivery only).
 - * Upstream 1/Auto takes priority after an All Reset, selected if connected.
 - * 1st connected upstream takes priority. This means if only an upstream is connected, KVM switches to it regardless of the OSD settings.
 - * Selects last effective option after powered on if both connected.
 - * Switches KVM after switching port manually or automatically if there's a matched option selected.
 - * Switches KVM immediately if any option is changed in OSD menu, only if the corresponding upstream is connected.
- **ASUS Power Sync:** Connects the power on and shutdown control of the monitor and a NUC mini PC connected to it via HDMI port.

- * Switches on or off the monitor using the power button in the front bezel also turns on or off the NUC connected to it.
- * Switches on or off the NUC connected to also turns on or off the monitor.
- **Power Delivery:** Enable or disable the Power Delivery function.
- **Information:** Shows the monitor information.
- **All Reset:** “Yes” allows you to restore the default settings.
- **ProArt Support:** If you have any questions, please reach out to ASUS via this QR code.

8. Shortcut

Defines the functions for Shortcut 1 and 2 buttons.



- **Shortcut 1/Shortcut 2:** Selects a function for Shortcut 1 and 2 buttons.



When a certain function is selected or activated, your shortcut key may not support. Available function choices for shortcut: Blue Light Filter, Brightness, ProArt Preset, HDR PQ, PIP/PBP, Color Temp., Volume, Energy Saving, User Mode 1, User Mode 2.

3.2 Specifications summary

Panel Type	OLED
Panel size	26.5" (16:9, 68.60 cm) wide screen
Max. Resolution	3840 x 2160
Pixel pitch	0.153 mm x 0.153 mm
Brightness (Typ.)	250 cd/m ² (SDR), 450 cd/m ² (HDR)
Contrast Ratio (Typ.)	15,000,000:1
Viewing angle (H/V) CR>10	178°/178°
Display colors	1.07B (10bits)
Response time	0.1 ms (GTG)
ProArt Preset selection	10 color preset modes
Color temperature selection	6 color temperatures
Analog input	No
Digital input	DisplayPort v1.4, HDMI 2.1, USB Type-C
Digital Output	DisplayPort
Earphone jack	Yes
Audio input	No
Speaker (Built-in)	2 W x 2 (4ohm)
USB 3.2 port	1 x USB 3.2 Gen 2 upstream Type-C (for KVM use) 1 x USB 3.2 Gen 1 downstream Type-C 3 x USB 3.2 Gen 1 downstream Type-A
Colors	Black
Power LED	White (On)/Amber (Standby)
Tilt	+23° ~ -5°
Pivot	+90° ~ -90°
Swivel	+30° ~ -30°
Height Adjustment	130 mm
Kensington lock	Yes
AC input voltage	AC: 100~240V
Power consumption	Power On: 26.54 W**(Typ.), Power Standby: ≤ 0.5 W, DC Power Off: ≤ 0.3 W, AC Switch Off: 0 W
Temperature (Operating)	0°C~40°C
Temperature (Non-operating)	-20°C~+60°C
Dimension (W x H x D) without stand	612.1 mm x 360.9 mm x 39.8 mm
Dimension (W x H x D) with stand	612.1 mm x 525.8 mm x 202.1 mm (highest) 612.1 mm x 395.8 mm x 202.1 mm (lowest) 691 mm x 427 mm x 140 mm (package)
Weight (Esti.)	5.6 kg (Net); 3.6 kg (Net, without stand); 8.4 kg (Gross)

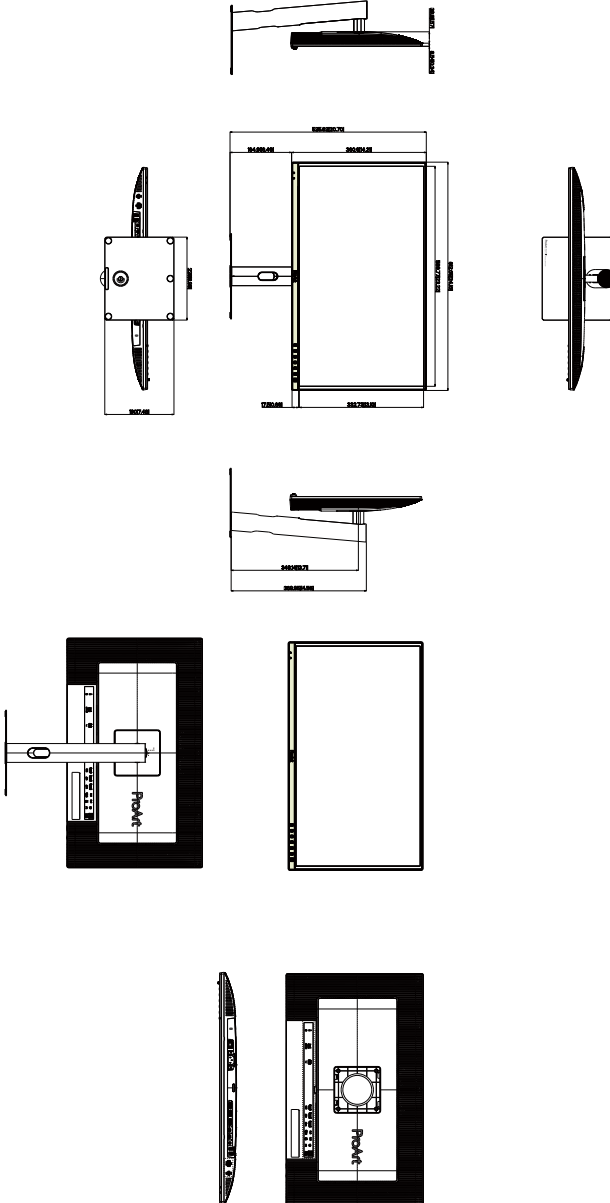
Multi-languages	23 languages (English, French, German, Italian, Spanish, Dutch, Portuguese, Russian, Czech, Croatian, Polish, Romanian, Hungarian, Turkish, Simplified Chinese, Traditional Chinese, Japanese, Korean, Thai, Indonesian, Persian, Ukrainian, Vietnamese)
Accessories	Quick start guide, warranty card, power cord, DisplayPort cable (optional), USB C to C cable (optional), color calibration report
Compliance and Standards	cTUVus, FCC, ICES-3, CB, CE, ErP, FCC, WEEE, EU Energy, ISO 9241-307, PSE, PSB, UkrSEPRO, Ukraine Energy, CU, CCC, CEL, BSMI, RCM, VCCI, PC recycle, J-MOSS, KC, KCC, KMEPS, Energy Star®, TCO10.0, RoHs, CEC, Windows 10/11 WHQL, Mac Compliance, TÜV Flicker Free, TÜV Low Blue Light, VESA MediaSync, Calman Verified, VESA DisplayHDR True Black 400

***Specifications are subject to change without notice.**


****Power consumption of On Mode as defined in Energy Star 8.0 version.**

3.3 Outline dimensions

ASUS PA279CDV Outline Dimension
 *Unit: mm(inch)



3.4 Troubleshooting (FAQ)

Problem	Possible Solution
Power LED is not ON	<ul style="list-style-type: none">• Press the  button to check if the monitor is in the ON mode.• Check if the power cord is properly connected to the monitor and the power outlet.• Check if the power switch is ON.
The power LED lights amber and there is no screen image	<ul style="list-style-type: none">• Check if the monitor and the computer are in the ON mode.• Make sure the signal cable is properly connected to the monitor and the computer.• Inspect the signal cable and make sure none of the pins are bent.• Connect the computer with another available monitor to check if the computer is properly working.
Screen image is too light or dark	<ul style="list-style-type: none">• Adjust the Contrast and Brightness settings via OSD.
Screen image bounces or a wave pattern is present in the image	<ul style="list-style-type: none">• Make sure the signal cable is properly connected to the monitor and the computer.• Move electrical devices that may cause electrical interference.
Screen image has color defects (white does not look white)	<ul style="list-style-type: none">• Inspect the signal cable and make sure that none of the pins are bent.• Perform All Reset via OSD.• Adjust the R/G/B color settings or select the Color Temperature via OSD.
No sound or sound is low	<ul style="list-style-type: none">• Ensure that the HDMI/DisplayPort/USB Type-C cable is properly connected to the monitor and the computer.• Adjust the volume settings of both your monitor and HDMI/DisplayPort/USB Type-C device.• Ensure that the computer sound card driver is properly installed and activated.

3.5 Supported operating modes

Preset	Resolution Frequency	Horizontal Frequency (KHz)	Vertical Frequency (Hz)	Pixel (MHz)	Full Screen	PIP	PBP
1	640 x 480	31.469(N)	59.94(N)	25.175	V	V	V
2	640 x 480	37.5(N)	75(N)	31.5	V	V	V
3	800 x 600	37.879(P)	60.317(P)	40	V	V	V
4	800 x 600	46.875(P)	75(P)	49.5	V	V	V
5	1024 x 768	48.363(N)	60.004(N)	65	V	V	V
6	1024 x 768	60.023(P)	75.029(P)	78.75	V	V	V
7	1280 x 960	60(P)	60(P)	108	V	V	V
8	1280 x 1024	63.981(P)	60.02(P)	108	V	V	V
9	1280 x 720	45(P)	60(P)	74.25	V	V	V
10	1600 x 1200	75(P)	60(P)	162	V	V	V
11	1920 x 1080	67.5(P)	60(P)	148.5	V	V	V
12	3840 x 2160	133.313(P)	60(N)	533.25	V	V	
13	2560 x 1440	182.996(P)	120(N)	497.75	V	V	
14	2560 x 1440	88.787(P)	60(N)	241.5	V	V	V
15	3840 x 2160	274.438(P)	120(N)	1097.75	V	V	
16	3840 x 2160	133.125(P)	60(N)	532.5	V	V	
17	3840 x 2160	65.625(P)	30(N)	262.5	V	V	
18	3840 x 2160	52.375(P)	24(N)	209.5	V	V	
19	1920 x 2160	133.293(P)	60(N)	277.25			V
20	3840 x 2160	274.433(P)	120(N)	1097.73	V		
21	2560 x 1440	88.787(P)	60(N)	241.5	V		

"P" / "N" stands for "Positive" / "Negative" polarity of incoming H-sync/V-sync (input timing).

Notes:

* Supported with HDR+VRR enabled on HDMI, Not supported preset 14/15.

* Preset 20/21 are only supported with HDR+VRR enabled on HDMI.

When the monitor is operating in the video mode (ie, not displaying data), the following high definition modes shall be supported in addition to standard definition video.

Resolution	Vertical Frequency (Hz)
3840 x 2160p	120Hz
	100Hz
	60Hz
	50Hz
	30Hz
	25Hz
	24Hz
1920 x 1080p	120Hz
	100Hz
	60Hz
	50Hz
	30Hz
	25Hz
	24Hz
1280 x 720p	60Hz
	50Hz
720 x 576p	50Hz
720 x 480p	59.94Hz
640 x 480p	59.94Hz
1920 x 1080i	60Hz
	50Hz
1440 x 480i	59.94Hz
1440 x 576i	50Hz

ASUS