

# ID1330

## ViewBoard Pen Display User Guide



IMPORTANT: Please read this User Guide to obtain important information on installing and using your product in a safe manner, as well as registering your product for future service. Warranty information contained in this User Guide will describe your limited coverage from ViewSonic® Corporation, which is also found on our web site at <http://www.viewsonic.com> in English, or in specific languages using the Regional selection box of our website.

Model No. VS18342  
P/N: ID1330

## **Thank you for choosing ViewSonic®**

As a world-leading provider of visual solutions, ViewSonic® is dedicated to exceeding the world's expectations for technological evolution, innovation, and simplicity. At ViewSonic®, we believe that our products have the potential to make a positive impact in the world, and we are confident that the ViewSonic® product you have chosen will serve you well.

Once again, thank you for choosing ViewSonic®!

# Safety Precautions

Please read the following **Safety Precautions** before you start using the device.

- Keep this user guide in a safe place for later reference.
- Read all warnings and follow all instructions.
- Allow at least 4" (10 cm) clearance around the device to ensure proper ventilation.
- Place the device in a well-ventilated area. Do not place anything on the device that prevents heat dissipation.
- Do not use the device near water. To reduce the risk of fire or electric shock, do not expose the device to moisture.
- Avoid exposing the device to direct sunlight or other sources of sustained heat.
- Do not install near any heat sources such as radiators, heat registers, stoves, or other devices (including amplifiers) that may increase the temperature of the device to dangerous levels.
- Use a soft, dry cloth to clean the external housing. Please see the "Maintenance" section for more information.
- Oil may collect on the screen if you touch it. Please see the "Maintenance" section for more information.
- Do not touch the screen surface with sharp or hard objects, as it may cause damage to the screen. Only use the supplied pen, or fingers for models that support touch input.
- When moving the device, be careful not to drop or bump the device on anything.
- Do not place the device on an uneven or unstable surface. The device may fall over resulting in an injury or a malfunction.
- Do not place any heavy objects on the device or connection cables.
- If smoke, an abnormal noise, or a strange odor is present, immediately turn the device off and call your dealer or ViewSonic®. It is dangerous to continue using the device.
- When connecting to a power outlet, DO NOT remove the grounding prong.
- Please ensure grounding prongs are NEVER REMOVED.
- Protect the power cord from being treaded upon or pinched, particularly at the plug, and at the point where it emerges from the equipment. Ensure that the power outlet is located near the equipment so that it is easily accessible.
- Only use attachments/accessories specified by the manufacturer.
- Disconnect the device if it is not going to be used for a long period of time.

# Contents

- Safety Precautions..... 3**
- Introduction ..... 6**
  - Package Contents .....6
  - System Requirements.....6
  - Product Overview .....7
  - I/O Overview .....7
- Making Connections..... 8**
  - Connecting the Pen Display.....8
    - HDMI and USB Type C ..... 8
    - USB Type C ..... 9
- Driver Installation, Use, and Removal..... 10**
  - Installing Drivers and Software (Windows) .....10
    - ViewSonic Pen Manager..... 10
    - Setting the Display Area ..... 11
  - Pen Input Settings .....12
  - Uninstalling the Driver.....14
  - Installing Drivers and Software (MAC OSX) .....15
    - Pen Display Driver ..... 15
  - Pen Input Settings .....18
  - Uninstalling the Driver.....19
- Using the Pen Display ..... 20**
  - Turning the Device On/Off .....20
  - On-Screen Display (OSD) Menu .....21
  - Configuring the Settings .....22
    - General Operations ..... 22
    - On-Screen Display (OSD) Menu Tree ..... 23

<b>Appendix.....</b>	<b>25</b>
Specifications.....	25
Pen .....	25
Troubleshooting .....	26
Pen .....	26
FAQ.....	27
Maintenance.....	28
General Precautions .....	28
Cleaning the Screen.....	28
Cleaning the Case .....	28
Replacing a Pen Nib .....	29
<b>Regulatory and Service Information .....</b>	<b>30</b>
Compliance Information.....	30
FCC Compliance Statement.....	30
Industry Canada Statement.....	30
CE Conformity for European Countries .....	30
Declaration of RoHS2 Compliance.....	31
Indian Restriction of Hazardous Substances .....	32
Product Disposal at End of Product Life .....	32
Copyright Information .....	33
Customer Service .....	34
Limited Warranty .....	35
Mexico Limited Warranty.....	38

# Introduction

## Package Contents

- ID1330 Pen Display
- Electromagnetic Pen
- HDMI to Mini HDMI cable
- USB Type C to USB Type C cable
- USB Type C to USB Type A cable
- Replacement Pen nib
- Nib removal tool
- Quick start guide

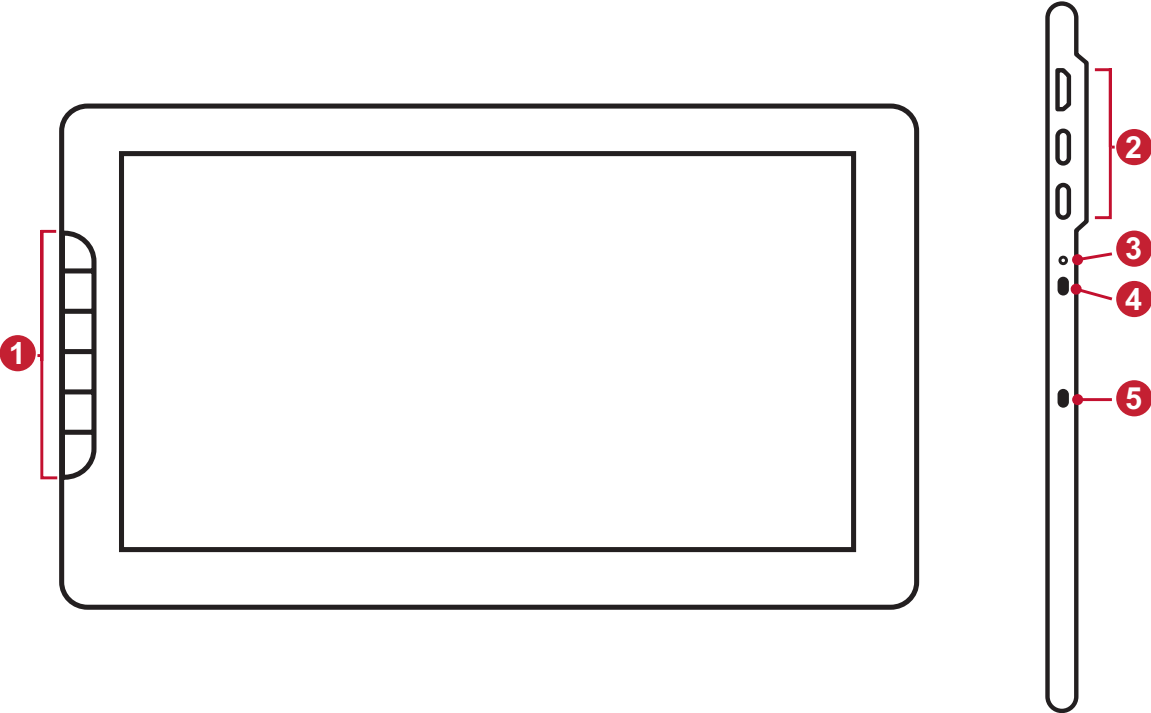
**NOTE:** The contents included in your package may vary depending on your country. Please contact your local reseller for more information.

## System Requirements

- **Operating System:**
  - » PC: Windows 7/8/10 (32/64 bit)
  - » Mac: macOS X 10.15 and above
- **CPU:**
  - » Pentium 233 MHz or above
- **Memory:**
  - » 64 MB or above
- **Hard disk space:**
  - » 128 MB or above
- **Interface:**
  - » HDMI and USB interface
  - » Full function USB Type C interface
  - » Thunderbolt 3 interface

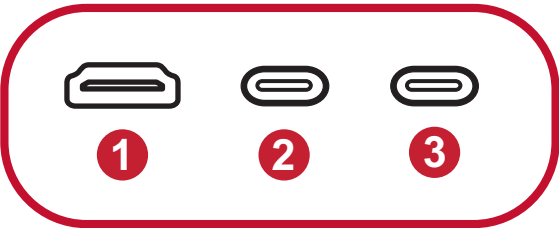
# Product Overview

## Front and Side View



1. Express Keys
2. I/O Ports
3. LED Indicator
4. Power Key
5. Menu Key

## I/O Overview



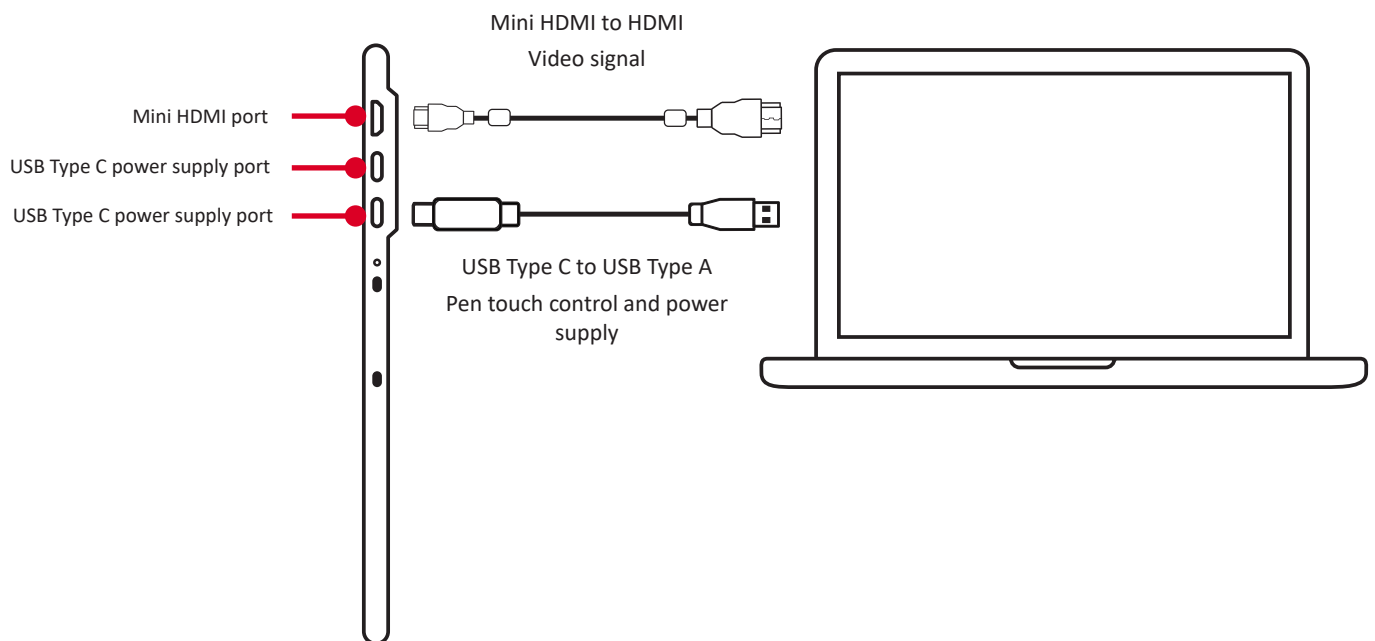
1. Mini HDMI
2. USB Type C
3. USB Type C

# Making Connections

## Connecting the Pen Display

### HDMI and USB Type C

1. Ensure the power of the computer and pen display are off before connecting them.
2. Connect one end of the HDMI cable to the HDMI port of your computer. Then connect the Mini HDMI end of the cable to the Mini HDMI port of the pen display.
3. Connect the USB Type A end of the USB cable to your computer. Then connect the USB Type C end to the pen display.

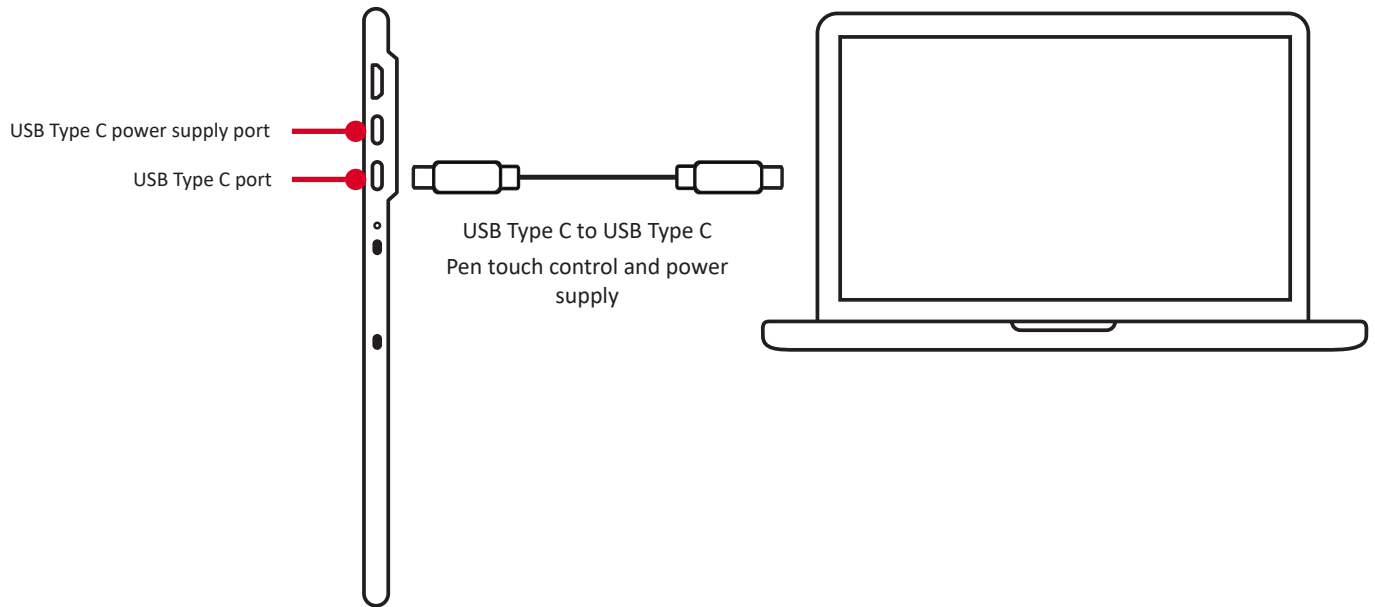


**NOTE:** If connected to a desktop computer, and a monitor was already connected to the computer itself, then the tablet and monitor must be connected to the same graphics card of the desktop computer.



## USB Type C

1. Ensure your computer is equipped with a full function USB TYPE C interface or Thunderbolt 3 interface.
2. Connect one end of the double-sided USB Type C cable to the USB Type C port of the pen display. Then connect the other end to the USB Type C port of the computer.



**NOTE:** If the power supply from the USB Type C port of the computer is insufficient, the screen of the pen display might flash.

In this case, connect a USB Type C to USB Type A cable to the USB Type C power supply port of the pen display, and connect the other end of the USB cable to the computer or a USB power adapter to ensure that sufficient power is supplied to the pen display.

# Driver Installation, Use, and Removal

## Installing Drivers and Software (Windows)

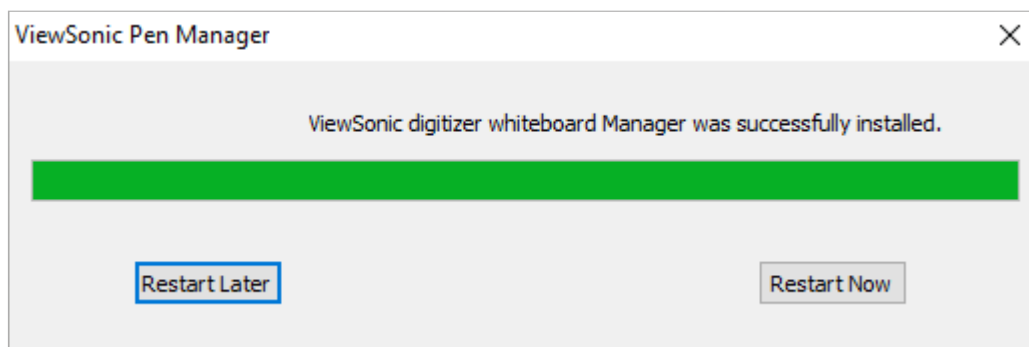
System Requirements: Windows 7/8/10 or above.

Before connecting and using the pen display, it is necessary to install the below drivers and software. The drivers and software can be downloaded at:

<https://www.viewsonicglobal.com/q/ID1330>

### ViewSonic Pen Manager

1. Open the installation file and install the driver.
2. After the installation completes, you will need to restart the computer.

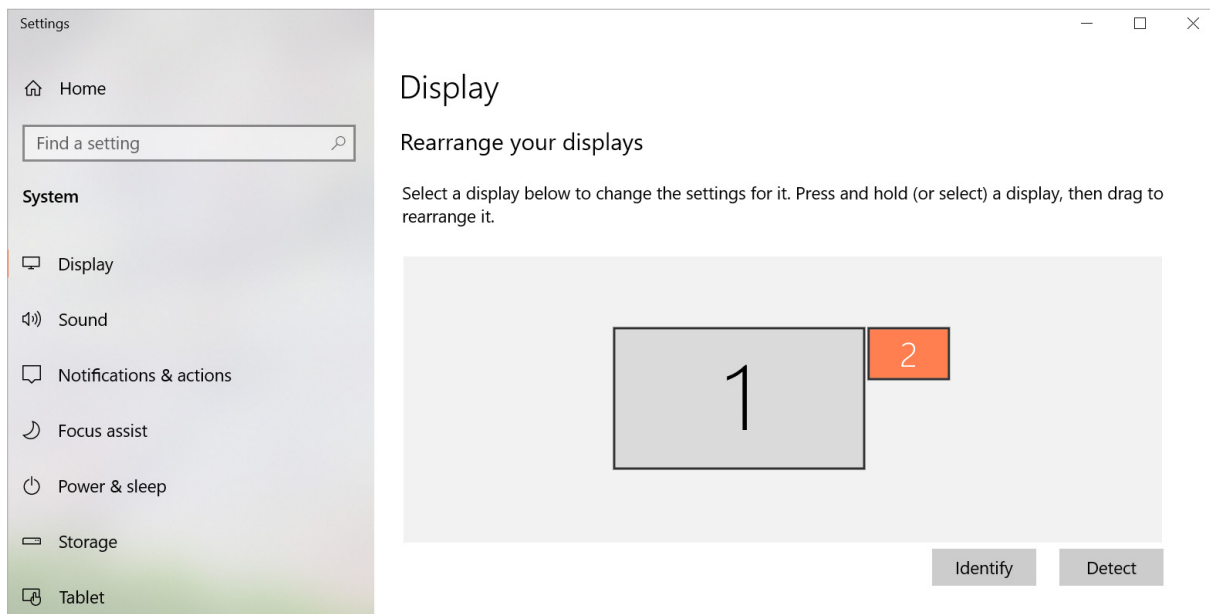


## Setting the Display Area

After the pen display is connected to the computer, the Display settings will need to be adjusted.

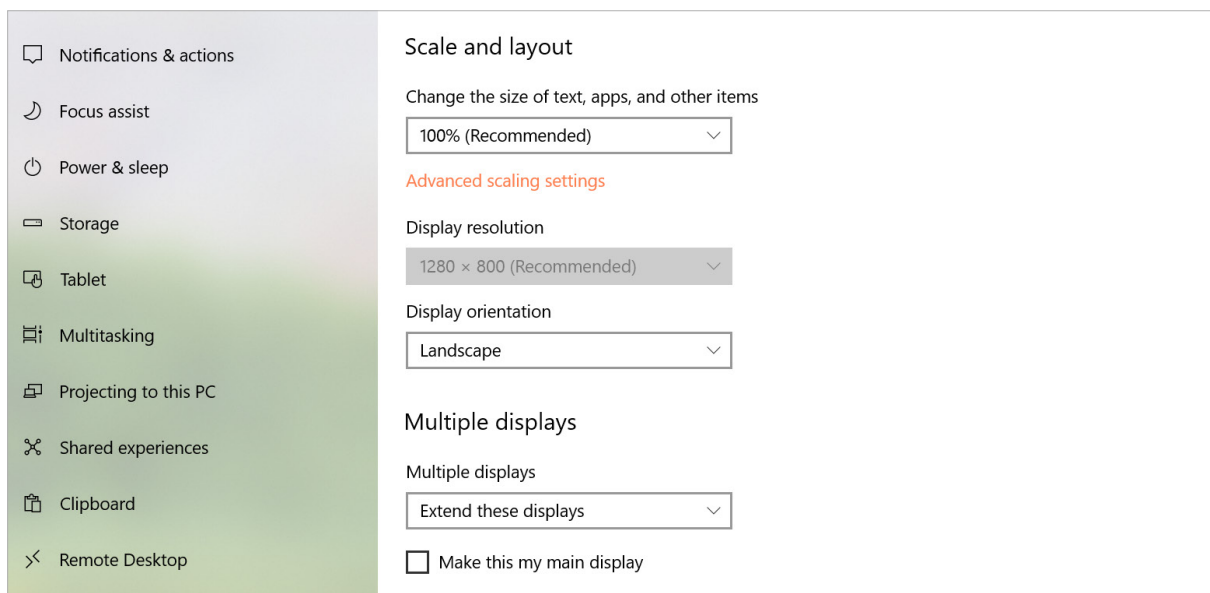
To access your computer's Display settings:

- Go to: **Start > Settings > System > Display**, or
- Right Click on the Desktop and select **Display settings**.



Once inside the Display settings, ensure the pen display is selected and:

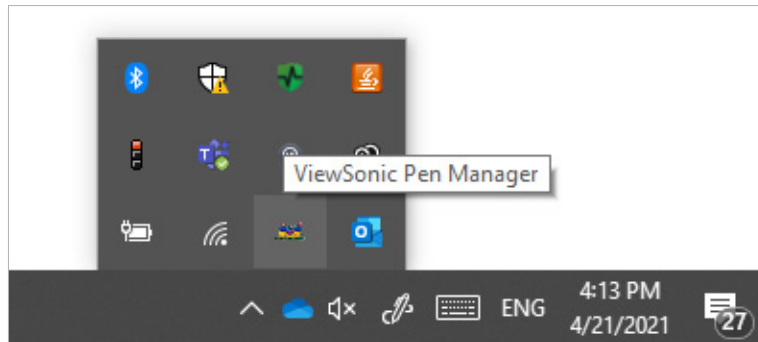
- **Display orientation** is set to **Landscape** or **Portrait**, and
- **Multiple displays** is set to **Extend these displays**.



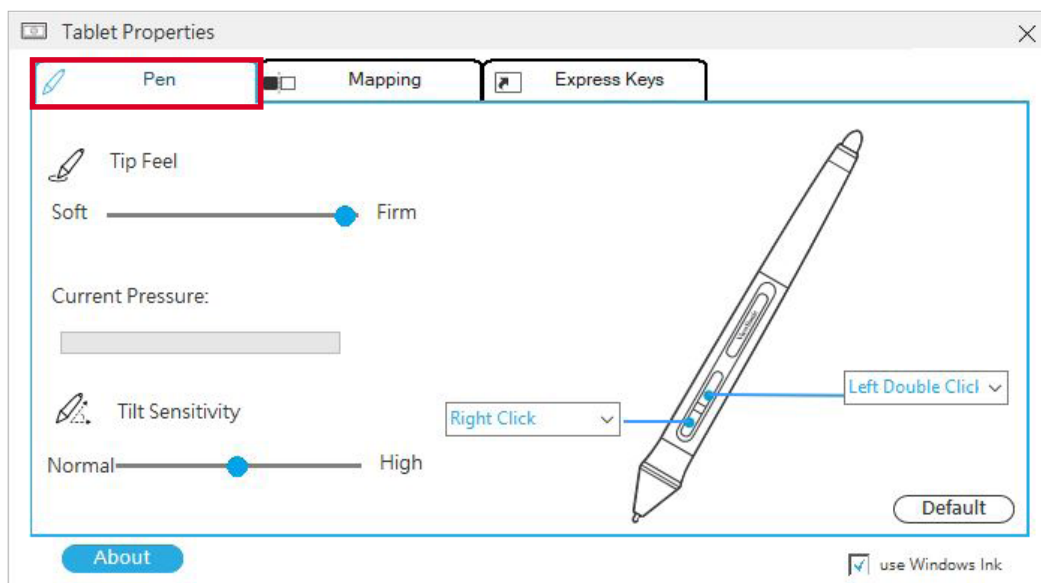
# Pen Input Settings

To adjust the pen input settings:

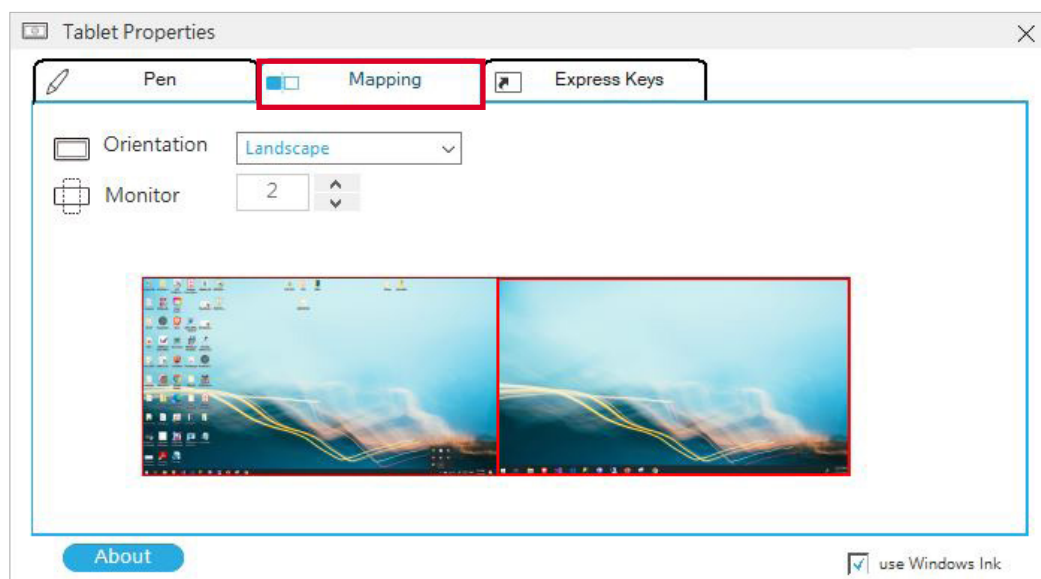
1. Open ViewSonic Pen Manager either by going to: **Start > ViewSonic Pen Manager** or selecting the ViewSonic Pen Manager icon from the System Tray.



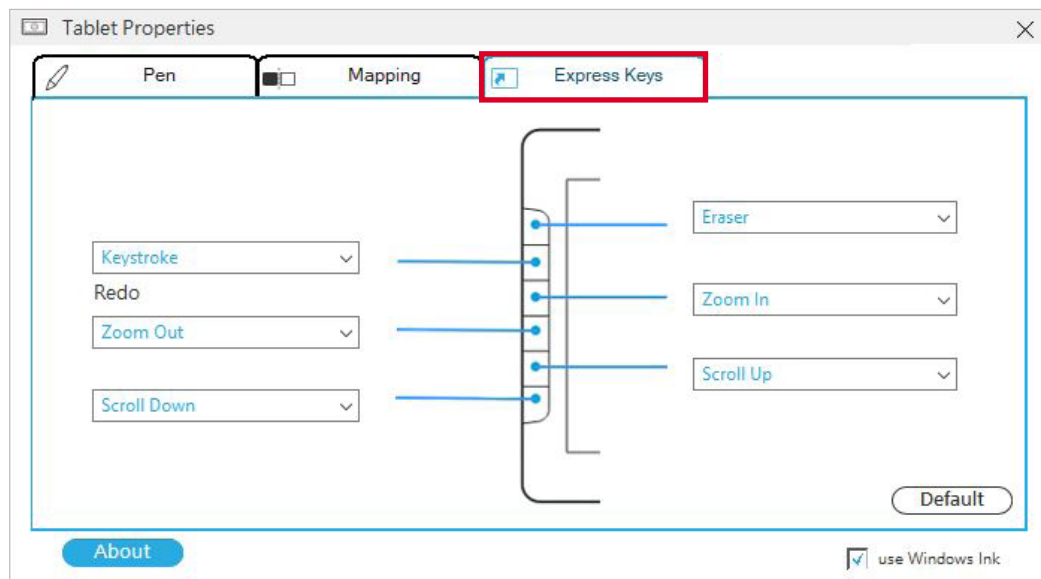
2. Adjustments to the pen can be made by selecting the **Pen** tab.



3. Select the **Mapping** tab to adjust screen orientation and display.



4. Select the **Express Keys** tab to customize the six (6) express keys on the pen display.



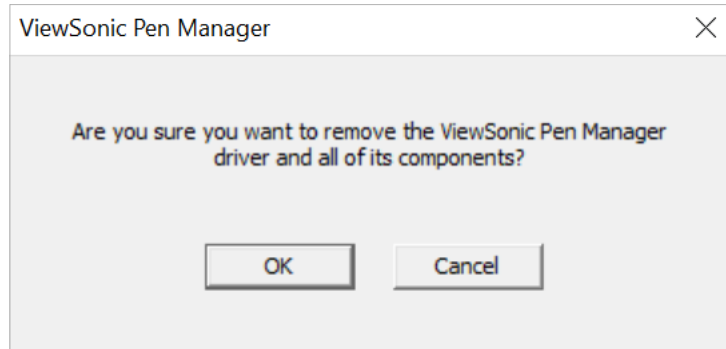
# Uninstalling the Driver

There are two ways to uninstall the driver:

- **Start > ViewSonic Pen Manager > Right Mouse Click > Uninstall**

or

- Open the **Control Panel > Programs > Programs and Features > ViewSonic Pen Manager > select Uninstall/Change**



# Installing Drivers and Software (MAC OSX)

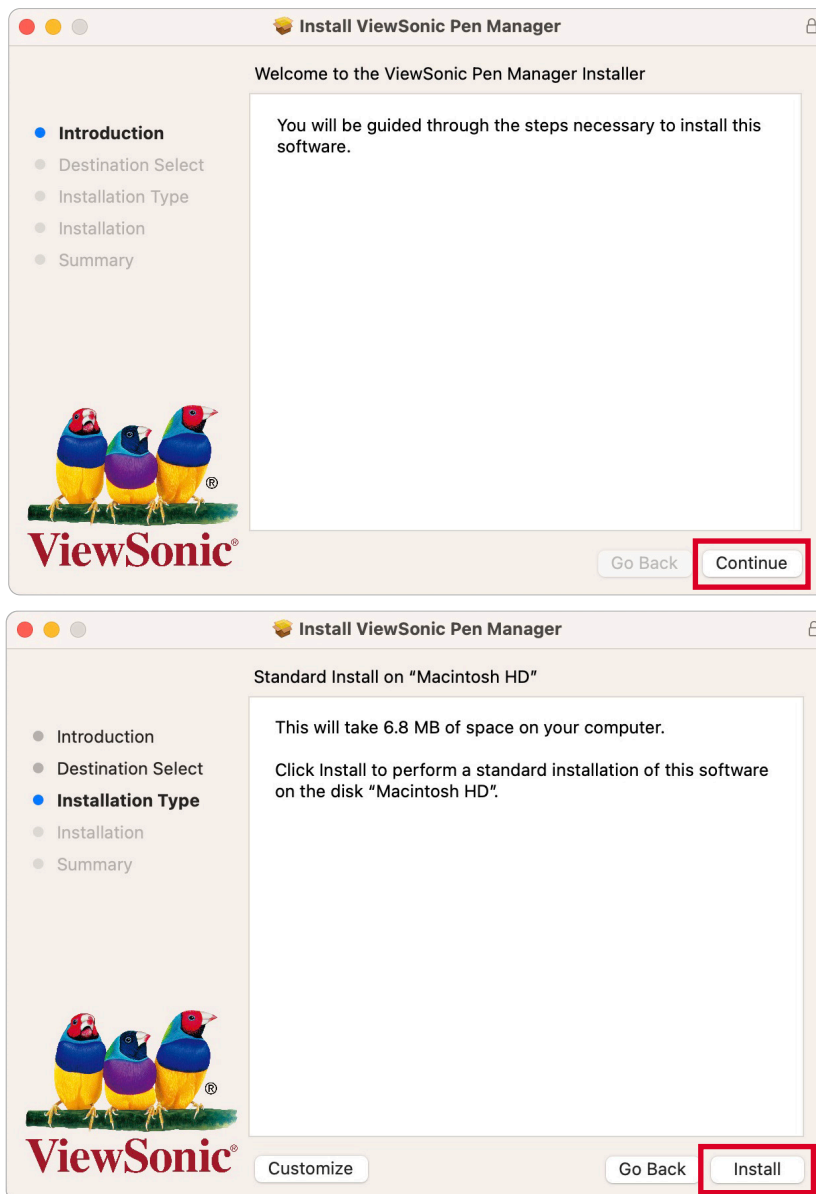
System Requirements: 10.15 or above.

Before connecting and using the pen display, it is necessary to install the below drivers and software. The drivers and software can be downloaded at:

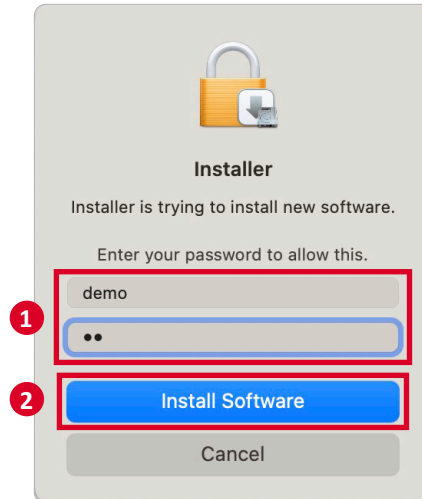
<https://www.viewsonicglobal.com/q/ID1330>

## Pen Display Driver

1. Open the Pen Display Driver installation file, click **Continue**, then **Install** to begin installing the driver.

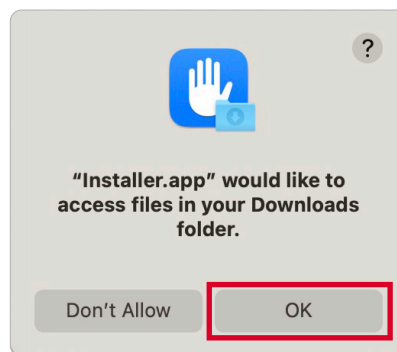


2. During installation, you will need to enter your macOS login information. After typing in your information, click **Install Software**.

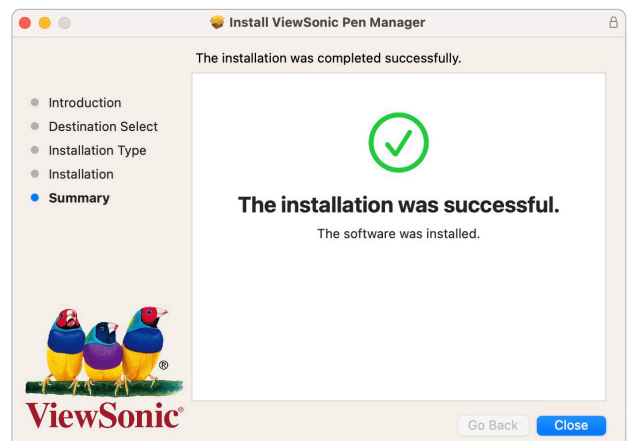
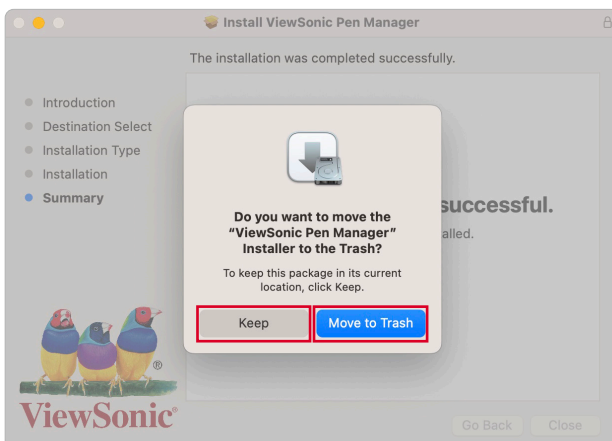


**NOTE:** For macOS version 10.14 and above, the system requires you to give privacy accessibility to allow the tablet driver to work.

3. Click **OK** to allow Downloads folder file access.

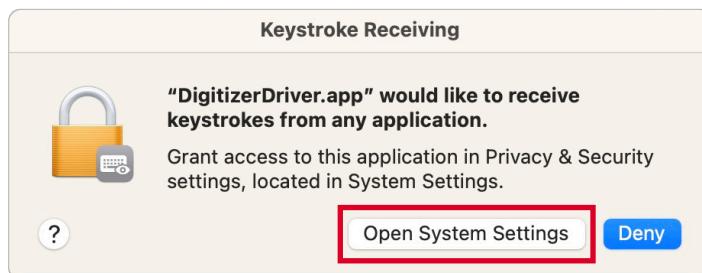


4. When the installation completes, choose to **Keep** the installation file or **Move to Trash** to remove it.

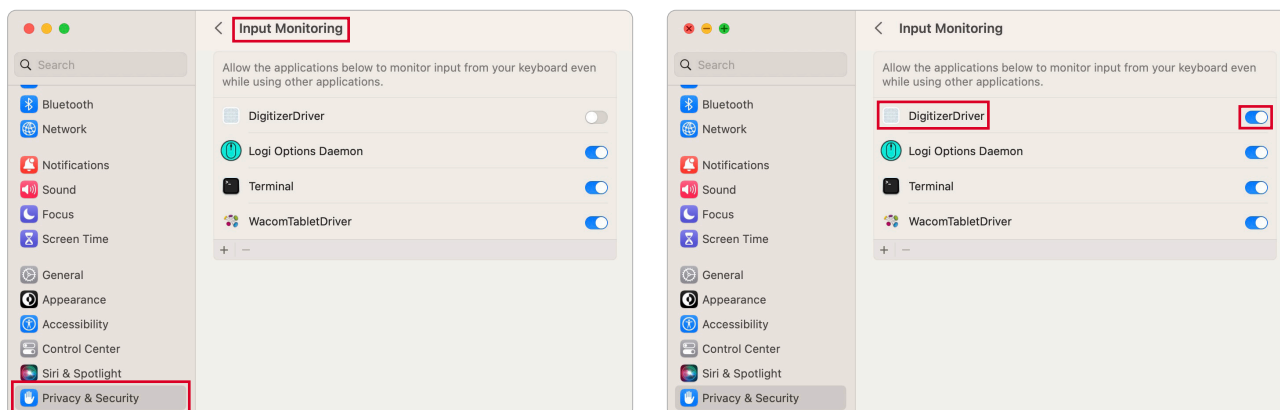




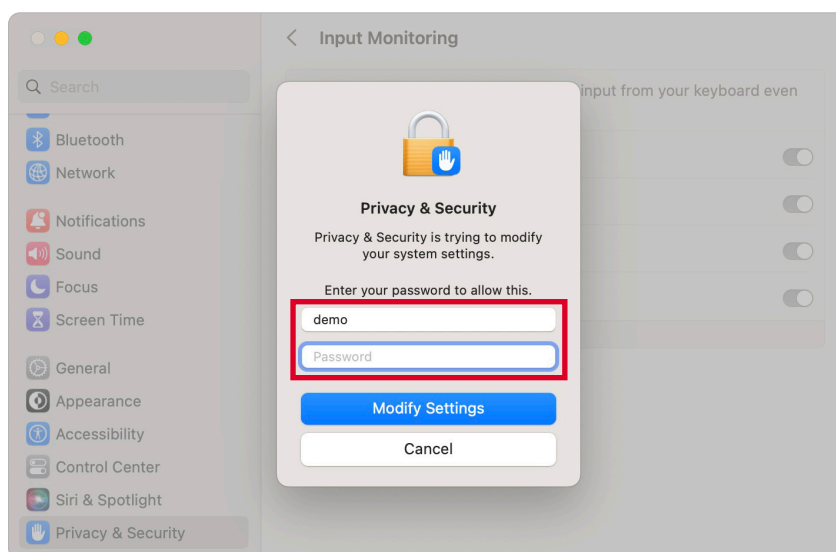
5. After plugging in the Pen Display, the system will show the “Keystroke Receiving” interface. Click **Open System Preferences**.



6. Go to: **Privacy & Security > Input Monitoring > Toggle DigitizerDriver ON.**



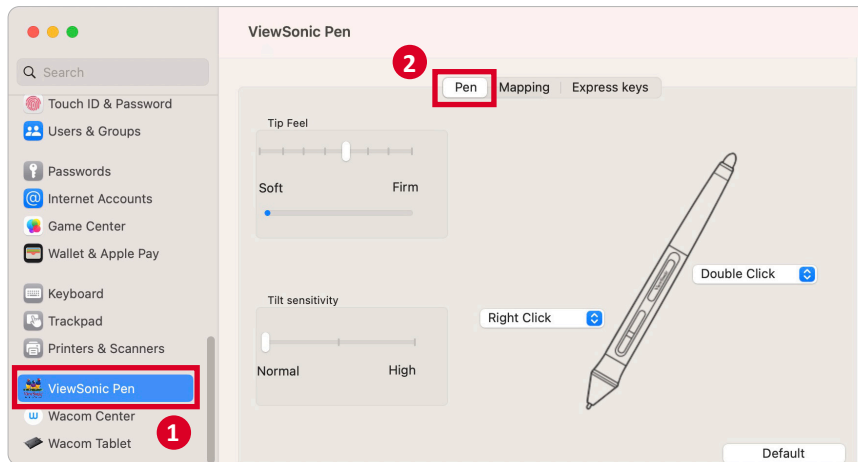
7. Enter your MacOS login information and click **Modify Settings**.



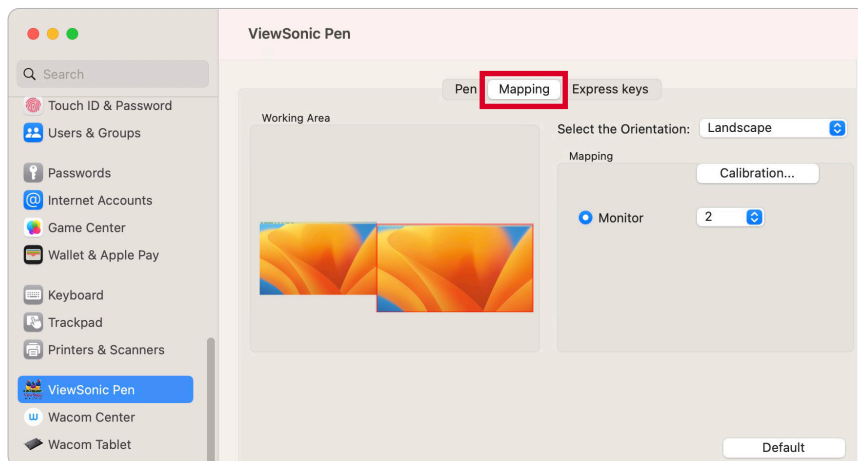
# Pen Input Settings

To adjust the pen input settings:

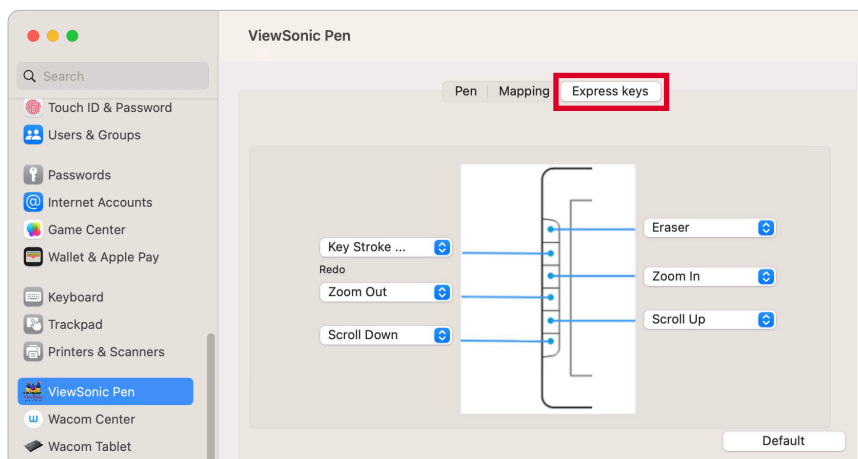
1. Open ViewSonic Pen Manager settings by clicking on the **Settings** (⚙️) icon.
2. Click on **ViewSonic Pen**, then adjustments to the pen can be made by selecting the **Pen** tab.



3. Select the **Mapping** tab to adjust screen orientation and display format.

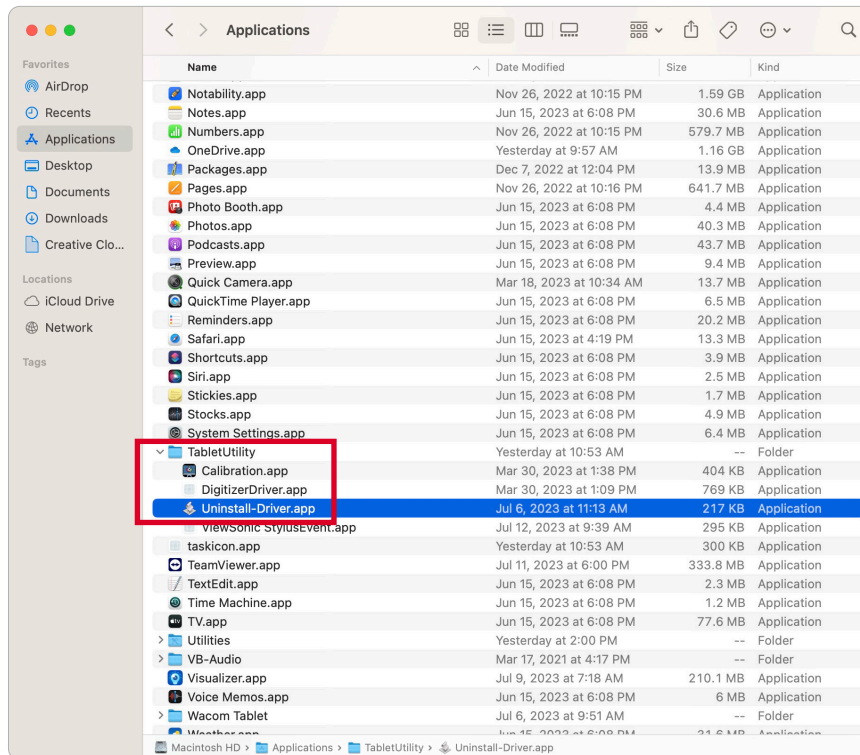


4. Select the **Express Keys** tab to customize the six (6) express keys on the pen display.

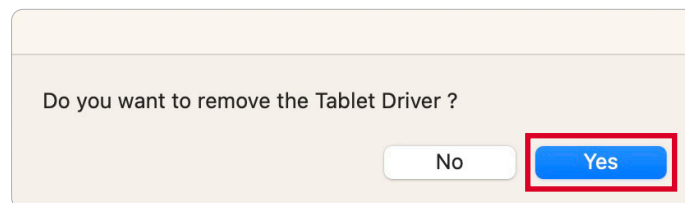


# Uninstalling the Driver

## 1. Select: **Go > Applications > Tablet Utility > Uninstall-Driver.app**



## 2. Click **Yes** when the system asks you to remove the driver.

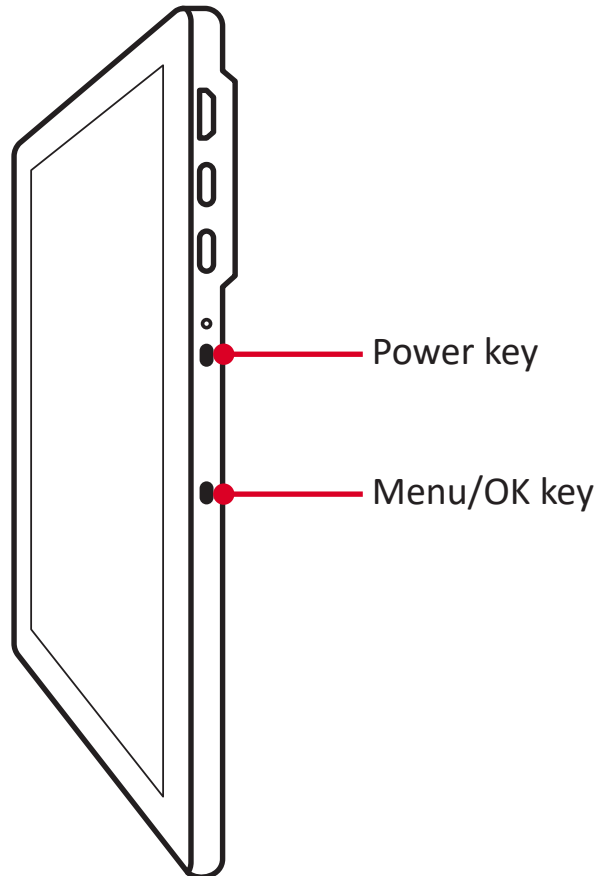


## 3. After uninstalling the driver, restart your Mac.

# Using the Pen Display

## Turning the Device On/Off

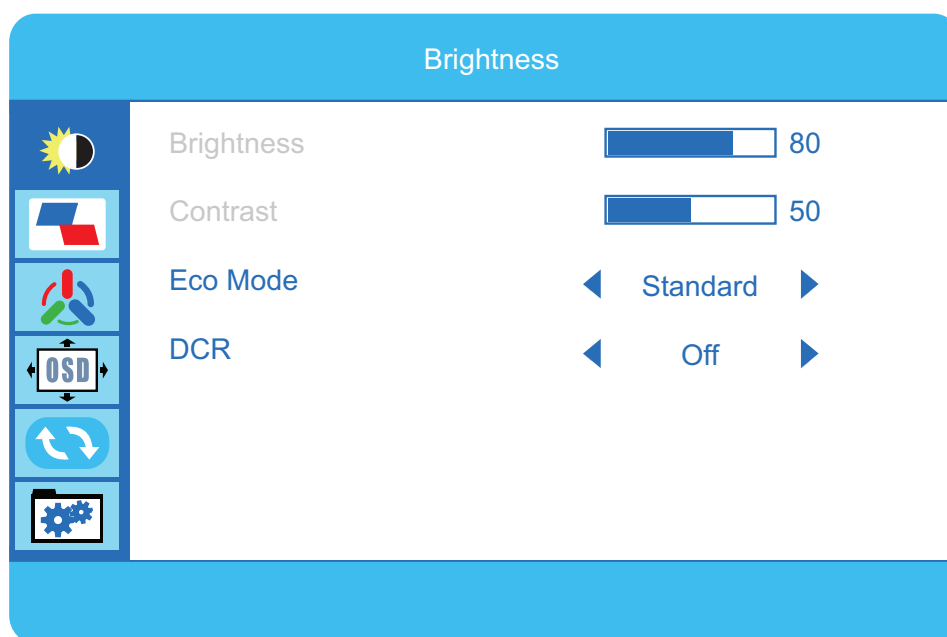
1. Ensure the pen display is connected properly to the computer.
2. Press the **Power** key to turn on the pen display.
3. To turn the pen display off, press the **Power** key again.









**NOTE:** The display will still consume some power as long as it is connected. If the pen display is not being used for a long period of time, please disconnect it.

# On-Screen Display (OSD) Menu

Press the **Menu** key to activate the On-Screen Display (OSD) Menu.



Menu		Description
	Brightness	Adjust the contrast or brightness level.
	Image	Manually set a variety of image quality adjustments.
	Color Temperature	Select one of the preset color settings.
	OSD Setting	Adjust On-Screen Display (OSD) settings.
	Reset	Returns the adjustments back to factory settings.
	Miscellaneous	Adjust the level, or mute the volume. Select the input source.

# Configuring the Settings

## General Operations

1. Press the **Menu** key to display the On-Screen Display (OSD) Menu.
2. Press the ▼ or ▲ key to select the main menu. Then press the **Menu** key to enter the selected menu.
3. Press the ▼ or ▲ key to select the desired menu option. Then press the **Menu** key to enter the sub-menu.
4. Press the ▼ or ▲ key to adjust/select the setting. Then press the **Menu** key to confirm.

**NOTE:** Certain menu option adjustments do not require the user to press the **Menu** key to confirm the selection.

## On-Screen Display (OSD) Menu Tree

Main Menu	Sub-menu	Menu Option	
Brightness	Brightness	(-/+, 0~100)	
	Contrast	(-/+, 0~100)	
	Eco Mode	Standard	
		Text	
		Game	
		Movie	
		EyeSaver	
	DCR	On	
		Off	
Image	H. Position	(-/+, 0~100)	
	V. Position	(-/+, 0~100)	
	Clock	(-/+, 0~100)	
	Phase	(-/+, 0~100)	
	Aspect	Auto	
		Wide	
		4:3	
Color Temperature	Color Temperature	Warm	
		Normal	
		Cool	
		User	Red (-/+, 0~100)
			Green (-/+, 0~100)
			Blue (-/+, 0~100)
	Low Blue Light Mode	On	
		Off	

Main Menu	Sub-menu	Menu Option	
OSD Setting	Language	English	
		Français	
		Deutsch	
		简体中文	
		Italiano	
		Español	
		Portuguese	
		Türkçe	
		Polish	
		Dutch	
		Русский	
		한국어	
	OSD H. Position	(-/+ , 0~100)	
	OSD V. Position	(-/+ , 0~100)	
	OSD Timeout	(-/+ , 5~120)	
	Transparency	(-/+ , 0/25/50/75/100)	
Reset	Image Auto Adjust		
	Color Auto Adjust		
	Reset		
	Auto Power down		
Misc	Hot Key Type	ECO+DCR	
		BRI+CON	
		ASP+ECO	
		SOU+VOL	
	Signal Source	VGA	
		DVI	
		HDMI	
	Mute	On	
		Off	
	Volume	(-/+ , 0~100)	



# Appendix

## Specifications

Item	Category	Specifications
LCD	Type	TFT Active Matrix 1920 x 1080 LCD,
	Display Size	33.02 cm, 13"
	Surface Treatment	Hard-coating (8H)
Resolution	Supported	1920 x 1080
Power	USB	DC 5V/2A, USB power supply
Operating conditions	Temperature	0° C to 40° C (32° F to 122° F)
	Humidity	20% to 80% (non-condensing)
Storage conditions	Temperature	-10° C to 60° C (14° F to 140° F)
	Humidity	10% to 90% (non-condensing)
Dimensions	Physical (W x H x D)	344 x 210 x 7 mm (13.54" x 8.27" x 0.28")
Weight	Physical	0.815 kg (1.8 lbs)
Power Consumption	On	5W (Typical)
	Standby	< 1W

## Pen

Item	Specifications
Type	Electromagnetic resonance
Power Supply	Battery-less
Resolution	5080 LPI (lines per inch)
Pressure Sensitivity	8192
Report Rate	Average 266 PPS (points per second)
Pen Tilt Angle	+/- 60°
OS Supported	Win10 (32/64 bit), Win8, Win 7, Win XP; macOS x 10.15 and above.

## Troubleshooting

This section describes some common problems that you may experience when using the monitor.

Problem or Issue	Possible Solutions
No picture on the display	<ul style="list-style-type: none"><li>• Ensure the USB cable is connected properly at both ends.</li><li>• Ensure USB connectors are connected directly to the PC - not to an external hub.</li><li>• Try another USB port on the computer.</li><li>• Ensure the computer is powered on.</li><li>• Ensure all drivers are installed and updated (if applicable).</li></ul>
Display interference	<ul style="list-style-type: none"><li>• Check if other nearby electrical devices are causing interference.</li></ul>
The display is not clear	<ul style="list-style-type: none"><li>• The optimal resolution is 1920 x 1080.</li><li>• Touching the display with your fingers may leave fingerprints and skin oil making the display unclear.</li><li>• Use a soft, dry cloth to remove any fingerprints or skin oil.</li></ul>

## Pen

Problem or Issue	Possible Solutions
The pen is not working	<ul style="list-style-type: none"><li>• Try using the computer's mouse; if the mouse also does not work please restart the computer.</li><li>• Reinstall the pen driver (if applicable).</li></ul>
The pen nib is too short, or not making proper contact with the display	<ul style="list-style-type: none"><li>• Check the condition of the pen nib. If it is too short, please replace the pen nib.</li></ul>
The cursor is not moving correctly	<ul style="list-style-type: none"><li>• Try restarting the computer.</li><li>• Ensure the USB cable is connected properly at both ends.</li></ul>

## FAQ

Question	Possible Solutions
How to find out whether the driver was installed properly?	<ul style="list-style-type: none"> <li>• After the driver was properly installed, and when the tablet and computer are connected properly, a small driver icon will appear in the icon tray of the computer.</li> <li>• When the electromagnetic pen is used on the tablet, it will be able to control the cursor properly, and it will be able to sense pressure during the pressure test in the driver control panel.</li> </ul>
What should I do if the small digital control panel icon did not appear in the icon tray of the computer after driver installation was completed?	<ul style="list-style-type: none"> <li>• If the driver was installed for the first time, the computer must be restarted after installation to let the driver complete the initial installation.</li> <li>• Make sure that the tablet is connected properly to the USB interface of the computer (it is recommended to connect to the USB interface at the back of the computer) and has not become loose.</li> <li>• If it was confirmed that the tablet was connected to the USB interface of the computer but there was still no small driver icon, please try to connect to other USB interfaces and restart the computer.</li> </ul>
The tablet cannot be used properly, how do I determine whether the malfunction is a hardware or software issue?	<ul style="list-style-type: none"> <li>• Connect the tablet with another computer to test it; if the tablet and the electromagnetic pen can be used on the other computer like a mouse without installing the driver, it means that the malfunction was caused by the current computer.</li> </ul>
How does the tablet realize drawing creations?	<ul style="list-style-type: none"> <li>• The tablet is only a type of input device for computers; it is considered hardware, and not drawing software.</li> <li>• If you want to perform drawing creations, it must be used with corresponding drawing software to realize drawing creations. It is recommended you purchase or download related drawing software.</li> </ul>

# Maintenance

## General Precautions

- Make sure the display is turned off and unplugged.
- Never spray or pour any liquid directly onto the screen or case.
- Handle the display with care.

## Cleaning the Screen

- Wipe the screen with a clean, soft, lint-free cloth. This removes dust and other particles.
- If the screen is still not clean, apply a small amount of non-ammonia, non-alcohol based glass cleaner onto a clean, soft, lint-free cloth; then wipe the screen.

## Cleaning the Case

- Use a soft, dry cloth.
- If the case is still not clean, apply a small amount of non-ammonia, non-alcohol based, mild non-abrasive detergent onto a clean, soft, lint-free cloth, then wipe the surface.

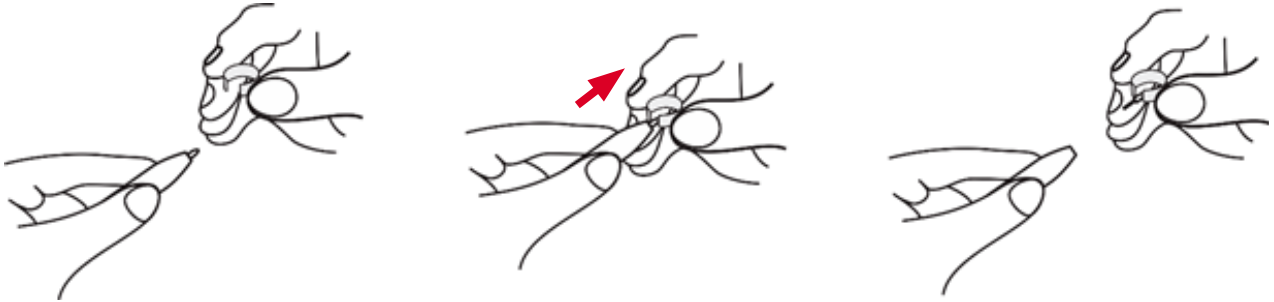
## Disclaimer

- ViewSonic® does not recommend the use of any ammonia or alcohol-based cleaners on the display screen or case. Some chemical cleaners have been reported to damage the screen and/or case of the monitor.
- ViewSonic® will not be liable for damage resulting from use of any ammonia or alcohol-based cleaners.

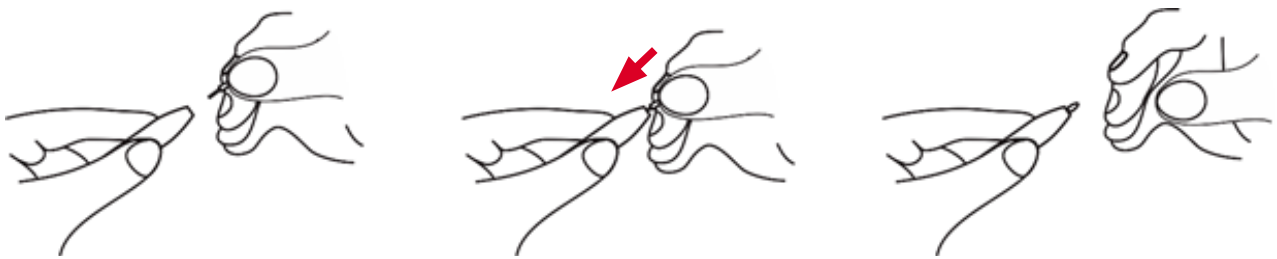
## Replacing a Pen Nib

When the pen nib gets too short or develops a sharp edge, it can be replaced with spare nibs. To replace a pen nib:

1. Use the *nib removal tool* to pull the old nib straight out of the pen.



2. Insert a new pen nib into the pen and push the nib in until it stops and is held firm.



# Regulatory and Service Information

## Compliance Information

This section addresses all connected requirements and statements regarding regulations. Confirmed corresponding applications shall refer to nameplate labels and relevant markings on the unit.

### FCC Compliance Statement

This device complies with part 15 of FCC Rules. Operation is subject to the following two conditions: (1) this device may not cause harmful interference, and (2) this device must accept any interference received, including interference that may cause undesired operation. This equipment has been tested and found to comply with the limits for a Class B digital device, pursuant to part 15 of the FCC Rules.

These limits are designed to provide reasonable protection against harmful interference in a residential installation. This equipment generates, uses, and can radiate radio frequency energy, and if not installed and used in accordance with the instructions, may cause harmful interference to radio communications. However, there is no guarantee that interference will not occur in a particular installation. If this equipment does cause harmful interference to radio or television reception, which can be determined by turning the equipment off and on, the user is encouraged to try to correct the interference by one or more of the following measures:

- Reorient or relocate the receiving antenna.
- Increase the separation between the equipment and receiver.
- Connect the equipment into an outlet on a circuit different from that to which the receiver is connected.
- Consult the dealer or an experienced radio/TV technician for help.

**Warning:** You are cautioned that changes or modifications not expressly approved by the party responsible for compliance could void your authority to operate the equipment.

### Industry Canada Statement

CAN ICES-003(B) / NMB-003(B)

### CE Conformity for European Countries



The device complies with the EMC Directive 2014/30/EU and Low Voltage Directive 2014/35/EU.

### The following information is only for EU-member states:

The mark shown to the right is in compliance with the Waste Electrical and Electronic Equipment Directive 2012/19/EU (WEEE). The mark indicates the requirement NOT to dispose of the equipment as unsorted municipal waste, but use the return and collection systems according to local law.



### Declaration of RoHS2 Compliance

This product has been designed and manufactured in compliance with Directive 2011/65/EU of the European Parliament and the Council on restriction of the use of certain hazardous substances in electrical and electronic equipment (RoHS2 Directive) and is deemed to comply with the maximum concentration values issued by the European Technical Adaptation Committee (TAC) as shown below:

Substance	Proposed Maximum Concentration	Actual Concentration
Lead (Pb)	0.1%	< 0.1%
Mercury (Hg)	0.1%	< 0.1%
Cadmium (Cd)	0.01%	< 0.01%
Hexavalent Chromium (Cr6 <sup>+</sup> )	0.1%	< 0.1%
Polybrominated biphenyls (PBB)	0.1%	< 0.1%
Polybrominated diphenyl ethers (PBDE)	0.1%	< 0.1%
Bis (2-ethylhexyl) phthalate (DEHP)	0.1%	< 0.1%
Butyl benzyl phthalate (BBP)	0.1%	< 0.1%
Dibutyl phthalate (DBP)	0.1%	< 0.1%
Diisobutyl phthalate (DIBP)	0.1%	< 0.1%

**Certain components of products as stated above are exempted under the Annex III of the RoHS2 Directives as noted below. Examples of exempted components are:**

- Lead as an alloying element in aluminum containing up to 0.4% lead by weight.
- Copper alloy containing up to 4% lead by weight.
- Lead in high melting temperature type solders (i.e. lead-based alloys containing 85% by weight or more lead).
- Electrical and electronic components containing lead in a glass or ceramic other than dielectric ceramic in capacitors, e.g. piezoelectronic devices, or in a glass or ceramic matrix compound.

## Indian Restriction of Hazardous Substances

Restriction on Hazardous Substances statement (India). This product complies with the “India E-waste Rule 2011” and prohibits use of lead, mercury, hexavalent chromium, polybrominated biphenyls or polybrominated diphenyl ethers in concentrations exceeding 0.1 weight % and 0.01 weight % for cadmium, except for the exemptions set in Schedule 2 of the Rule.

## Product Disposal at End of Product Life

ViewSonic® respects the environment and is committed to working and living green. Thank you for being part of Smarter, Greener Computing. Please visit the ViewSonic® website to learn more.

### USA & Canada:

<https://www.viewsonic.com/us/go-green-with-viewsonic>

### Europe:

<https://www.viewsonic.com/eu/go-green-with-viewsonic>

### Taiwan:

<https://recycle.moenv.gov.tw/>

**For EU users, please contact us for any safety/accident issue experienced with this product:**

ViewSonic Europe Limited



Haaksbergweg 75  
1101 BR Amsterdam  
Netherlands



+31 (0) 650608655



[EPREL@viewsoniceurope.com](mailto:EPREL@viewsoniceurope.com)



<https://www.viewsonic.com/eu/>



## Copyright Information

Copyright© ViewSonic® Corporation, 2021. All rights reserved.

Macintosh and Power Macintosh are registered trademarks of Apple Inc.

Microsoft, Windows, and the Windows logo are registered trademarks of Microsoft Corporation in the United States and other countries.

ViewSonic®, the three birds logo, OnView, ViewMatch, and ViewMeter are registered trademarks of ViewSonic® Corporation.

VESA is a registered trademark of the Video Electronics Standards Association. DPMS, DisplayPort, and DDC are trademarks of VESA.

ENERGY STAR® is a registered trademark of the U.S. Environmental Protection Agency (EPA).

**Disclaimer:** ViewSonic® Corporation shall not be liable for technical or editorial errors or omissions contained herein; nor for incidental or consequential damages resulting from furnishing this material, or the performance or use of this product.

In the interest of continuing product improvement, ViewSonic® Corporation reserves the right to change product specifications without notice. Information in this document may change without notice.

No part of this document may be copied, reproduced, or transmitted by any means, for any purpose without prior written permission from ViewSonic® Corporation.

## Customer Service

For technical support or product service, see the table below or contact your reseller.

**NOTE:** You will need the product's serial number.

Country/ Region	Website	Country/ Region	Website
<b>Asia Pacific &amp; Africa</b>			
Australia	<a href="http://www.viewsonic.com/au/">www.viewsonic.com/au/</a>	Bangladesh	<a href="http://www.viewsonic.com/bd/">www.viewsonic.com/bd/</a>
中国 (China)	<a href="http://www.viewsonic.com.cn">www.viewsonic.com.cn</a>	香港 (繁體中文)	<a href="http://www.viewsonic.com/hk/">www.viewsonic.com/hk/</a>
Hong Kong (English)	<a href="http://www.viewsonic.com/hk-en/">www.viewsonic.com/hk-en/</a>	India	<a href="http://www.viewsonic.com/in/">www.viewsonic.com/in/</a>
Indonesia	<a href="http://www.viewsonic.com/id/">www.viewsonic.com/id/</a>	Israel	<a href="http://www.viewsonic.com/il/">www.viewsonic.com/il/</a>
日本 (Japan)	<a href="http://www.viewsonic.com/jp/">www.viewsonic.com/jp/</a>	Korea	<a href="http://www.viewsonic.com/kr/">www.viewsonic.com/kr/</a>
Malaysia	<a href="http://www.viewsonic.com/my/">www.viewsonic.com/my/</a>	Middle East	<a href="http://www.viewsonic.com/me/">www.viewsonic.com/me/</a>
Myanmar	<a href="http://www.viewsonic.com/mm/">www.viewsonic.com/mm/</a>	Nepal	<a href="http://www.viewsonic.com/np/">www.viewsonic.com/np/</a>
New Zealand	<a href="http://www.viewsonic.com/nz/">www.viewsonic.com/nz/</a>	Pakistan	<a href="http://www.viewsonic.com/pk/">www.viewsonic.com/pk/</a>
Philippines	<a href="http://www.viewsonic.com/ph/">www.viewsonic.com/ph/</a>	Singapore	<a href="http://www.viewsonic.com/sg/">www.viewsonic.com/sg/</a>
臺灣 (Taiwan)	<a href="http://www.viewsonic.com/tw/">www.viewsonic.com/tw/</a>	ประเทศไทย	<a href="http://www.viewsonic.com/th/">www.viewsonic.com/th/</a>
Việt Nam	<a href="http://www.viewsonic.com/vn/">www.viewsonic.com/vn/</a>	South Africa & Mauritius	<a href="http://www.viewsonic.com/za/">www.viewsonic.com/za/</a>
<b>Americas</b>			
United States	<a href="http://www.viewsonic.com/us">www.viewsonic.com/us</a>	Canada	<a href="http://www.viewsonic.com/us">www.viewsonic.com/us</a>
Latin America	<a href="http://www.viewsonic.com/la">www.viewsonic.com/la</a>		
<b>Europe</b>			
Europe	<a href="http://www.viewsonic.com/eu/">www.viewsonic.com/eu/</a>	France	<a href="http://www.viewsonic.com/fr/">www.viewsonic.com/fr/</a>
Deutschland	<a href="http://www.viewsonic.com/de/">www.viewsonic.com/de/</a>	Қазақстан	<a href="http://www.viewsonic.com/kz/">www.viewsonic.com/kz/</a>
Россия	<a href="http://www.viewsonic.com/ru/">www.viewsonic.com/ru/</a>	España	<a href="http://www.viewsonic.com/es/">www.viewsonic.com/es/</a>
Türkiye	<a href="http://www.viewsonic.com/tr/">www.viewsonic.com/tr/</a>	Україна	<a href="http://www.viewsonic.com/ua/">www.viewsonic.com/ua/</a>
United Kingdom	<a href="http://www.viewsonic.com/uk/">www.viewsonic.com/uk/</a>		

## Limited Warranty

### ViewSonic® Display

#### **What the warranty covers:**

ViewSonic® warrants its products to be free from defects in material and workmanship during the warranty period. If a product proves to be defective in material or workmanship during the warranty period, ViewSonic® will, at its sole option, and as your sole remedy, repair or replace the product with a similar product. Replacement Product or parts (e.g. system board, display panel, power board) may include remanufactured or refurbished parts or components. The repair or replacement unit or parts or components will be covered by the balance of the time remaining on the customer's original limited warranty and the warranty period will not be extended. ViewSonic® provides no warranty for any third-party software whether included with the product or installed by the customer, installation of any unauthorized hardware parts or components (e.g. Projector Lamps). (Please refer to: "What the warranty excludes and does not cover" section).

#### **How long the warranty is effective:**

ViewSonic® displays are warranted for between 1 and 3 years, depending on your country of purchase, for all parts including the light source and for all labor from the date of the first consumer purchase.

#### **Who the warranty protects:**

This warranty is valid only for the first consumer purchaser.

#### **What the warranty excludes and does not cover:**

- Any product on which the serial number has been defaced, modified, or removed.
- Damage, deterioration, or malfunction resulting from:
  - » Accident, misuse, neglect, fire, water, lightning, or other acts of nature, unauthorized product modification, or failure to follow instructions supplied with the product.
  - » Repair or attempted repair by anyone not authorized by ViewSonic®.
  - » Damage to or loss of any programs, data, or removable storage media.
  - » Normal wear and tear.
  - » Removal or installation of the product.
- Software or data loss occurring during repair or replacement.
- Any damage of the product due to shipment.

- Causes external to the product, such as electric power fluctuations or failure.
- Use of supplies or parts not meeting ViewSonic's specifications.
- Failure of owner to perform periodic product maintenance as stated in the User Guide.
- Any other cause which does not relate to a product defect.
- Damage caused by static (non-moving) images displayed for lengthy periods of time (also referred to as image burn-in).
- Software - Any third-party software included with the product or installed by the customer.
- Hardware/Accessories/Parts/Components – Installation of any unauthorized hardware, accessories, consumable parts or components (e.g. Projector Lamps).
- Damage to, or abuse of, the coating on the surface of the display through inappropriate cleaning as described in the product User Guide.
- Removal, installation, and set-up service charges, including wall-mounting of the product.

#### **How to get service:**

- For information about receiving service under warranty, contact ViewSonic® Customer Support (Please refer to the "Customer Service" page). You will need to provide your product's serial number.
- To obtain warranty service, you will be required to provide: (a) the original dated sales slip, (b) your name, (c) your address, (d) a description of the problem, and (e) the serial number of the product.
- Take or ship the product, freight prepaid, in the original container to an authorized ViewSonic® service center or ViewSonic®.
- For additional information or the name of the nearest ViewSonic® service center, contact ViewSonic®.

#### **Limitation of implied warranties:**

There are no warranties, express or implied, which extend beyond the description contained herein including the implied warranty of merchantability and fitness for a particular purpose.

**Exclusion of damages:**

ViewSonic's liability is limited to the cost of repair or replacement of the product. ViewSonic® shall not be liable for:

- Damage to other property caused by any defects in the product, damages based upon inconvenience, loss of use of the product, loss of time, loss of profits, loss of business opportunity, loss of goodwill, interference with business relationships, or other commercial loss, even if advised of the possibility of such damages.
- Any other damages, whether incidental, consequential or otherwise.
- Any claim against the customer by any other party.
- Repair or attempted repair by anyone not authorized by ViewSonic®.

**Effect of state law:**

This warranty gives you specific legal rights, and you may also have other rights which vary from state to state. Some states do not allow limitations on implied warranties and/or do not allow the exclusion of incidental or consequential damages, so the above limitations and exclusions may not apply to you.

**Sales outside the U.S.A. and Canada:**

For warranty information and service on ViewSonic® products sold outside of the U.S.A. and Canada, contact ViewSonic® or your local ViewSonic® dealer.

The warranty period for this product in mainland China (Hong Kong, Macao, and Taiwan Excluded) is subject to the terms and conditions of the Maintenance Guarantee Card.

For users in Europe and Russia, full details of warranty provided can be found at: <http://www.viewsonic.com/eu/> under "Support/Warranty Information".

## **Mexico Limited Warranty**

### **ViewSonic® Display**

#### **What the warranty covers:**

ViewSonic® warrants its products to be free from defects in material and workmanship, under normal use, during the warranty period. If a product proves to be defective in material or workmanship during the warranty period, ViewSonic® will, at its sole option, repair or replace the product with a like product. Replacement product or parts may include remanufactured or refurbished parts or components & accessories.

#### **How long the warranty is effective:**

ViewSonic® displays are warranted for between 1 and 3 years, depending on your country of purchase, for all parts including the light source and for all labour from the date of the first consumer purchase.

#### **Who the warranty protects:**

This warranty is valid only for the first consumer purchaser.

#### **What the warranty excludes and does not cover:**

- Any product on which the serial number has been defaced, modified or removed.
- Damage, deterioration, or malfunction resulting from:
  - » Accident, misuse, neglect, fire, water, lightning, or other acts of nature, unauthorized product modification, unauthorized attempted repair, or failure to follow instructions supplied with the product.
  - » Causes external to the product, such as electrical power fluctuations or failure.
  - » Use of supplies or parts not meeting ViewSonic®'s specifications.
  - » Normal wear and tear.
  - » Any other cause which does not relate to a product defect.
- Any product exhibiting a condition commonly known as "image burn-in" which results when a static image is displayed on the product for an extended period of time.
- Removal, installation, insurance, and set-up service charges.

## How to get service:

For information about receiving service under warranty, contact ViewSonic® Customer Support (Please refer to the attached “Customer Service” page). You will need to provide your product’s serial number, so please record the product information in the space provided below on your purchase for your future use. Please retain your receipt of proof of purchase to support your warranty claim.

## For Your Records

Product Name: \_\_\_\_\_ Model Number: \_\_\_\_\_

Document Number: \_\_\_\_\_ Serial Number: \_\_\_\_\_

Purchase Date: \_\_\_\_\_ Extended Warranty Purchase? \_\_\_\_\_ (Y/N)

If so, what date does warranty expire? \_\_\_\_\_

- To obtain warranty service, you will be required to provide (a) the original dated sales slip, (b) your name, (c) your address, (d) a description of the problem, and (e) the serial number of the product.
- Take or ship the product, in the original container packaging, to an authorized ViewSonic® service center.
- Round trip transportation costs for in-warranty products will be paid by ViewSonic®.

## Limitation of implied warranties:

There are no warranties, express or implied, which extend beyond the description contained herein including the implied warranty of merchantability and fitness for a particular purpose.

## Exclusion of damages:

ViewSonic®’s liability is limited to the cost of repair or replacement of the product. ViewSonic® shall not be liable for:

- Damage to other property caused by any defects in the product, damages based upon inconvenience, loss of use of the product, loss of time, loss of profits, loss of business opportunity, loss of goodwill, interference with business relationships, or other commercial loss, even if advised of the possibility of such damages.
- Any other damages, whether incidental, consequential or otherwise.
- Any claim against the customer by any other party.
- Repair or attempted repair by anyone not authorized by ViewSonic®.

Contact Information for Sales & Authorized Service (Centro Autorizado de Servicio) within Mexico:	
<b>Name, address, of manufacturer and importers:</b> México, Av. de la Palma #8 Piso 2 Despacho 203, Corporativo Interpalmas, Col. San Fernando Huixquilucan, Estado de México Tel: (55) 3605-1099 <a href="http://www.viewsonic.com/la/soporte/index.htm">http://www.viewsonic.com/la/soporte/index.htm</a>	
NÚMERO GRATIS DE ASISTENCIA TÉCNICA PARA TODO MÉXICO: 001.866.823.2004	
<b>Hermosillo:</b> Distribuciones y Servicios Computacionales SA de CV. Calle Juárez 284 local 2 Col. Bugambilias C.P: 83140 Tel: 01-66-22-14-9005 E-Mail: <a href="mailto:disc2@hmo.megared.net.mx">disc2@hmo.megared.net.mx</a>	<b>Villahermosa:</b> Compumantenimientos Garantizados, S.A. de C.V. AV. GREGORIO MENDEZ #1504 COL, FLORIDA C.P. 86040 Tel: 01 (993) 3 52 00 47 / 3522074 / 3 52 20 09 E-Mail: <a href="mailto:compumantenimientos@prodigy.net.mx">compumantenimientos@prodigy.net.mx</a>
<b>Puebla, Pue. (Matriz):</b> RENTA Y DATOS, S.A. DE C.V. Domicilio: 29 SUR 721 COL. LA PAZ 72160 PUEBLA, PUE. Tel: 01(52).222.891.55.77 CON 10 LINEAS E-Mail: <a href="mailto:datos@puebla.megared.net.mx">datos@puebla.megared.net.mx</a>	<b>Veracruz, Ver.:</b> CONEXION Y DESARROLLO, S.A DE C.V. Av. Americas # 419 ENTRE PINZÓN Y ALVARADO Fracc. Reforma C.P. 91919 Tel: 01-22-91-00-31-67 E-Mail: <a href="mailto:gacosta@qplus.com.mx">gacosta@qplus.com.mx</a>
<b>Chihuahua:</b> Soluciones Globales en Computación C. Magisterio # 3321 Col. Magisterial Chihuahua, Chih. Tel: 4136954 E-Mail: <a href="mailto:Cefeo@soluglobales.com">Cefeo@soluglobales.com</a>	<b>Cuernavaca:</b> Compusupport de Cuernavaca SA de CV Francisco Leyva # 178 Col. Miguel Hidalgo C.P. 62040, Cuernavaca Morelos Tel: 01 777 3180579 / 01 777 3124014 E-Mail: <a href="mailto:aquevedo@compusupportcva.com">aquevedo@compusupportcva.com</a>
<b>Distrito Federal:</b> QPLUS, S.A. de C.V. Av. Coyoacán 931 Col. Del Valle 03100, México, D.F. Tel: 01(52)55-50-00-27-35 E-Mail : <a href="mailto:gacosta@qplus.com.mx">gacosta@qplus.com.mx</a>	<b>Guadalajara, Jal.:</b> SERVICRECE, S.A. de C.V. Av. Niños Héroes # 2281 Col. Arcos Sur, Sector Juárez 44170, Guadalajara, Jalisco Tel: 01(52)33-36-15-15-43 E-Mail: <a href="mailto:mmiranda@servicrece.com">mmiranda@servicrece.com</a>
<b>Guerrero Acapulco:</b> GS Computación (Grupo Sesicomp) Progreso #6-A, Colo Centro 39300 Acapulco, Guerrero Tel: 744-48-32627	<b>Monterrey:</b> Global Product Services Mar Caribe # 1987, Esquina con Golfo Pérsico Fracc. Bernardo Reyes, CP 64280 Monterrey N.L. México Tel: 8129-5103 E-Mail: <a href="mailto:aydeem@gps1.com.mx">aydeem@gps1.com.mx</a>
<b>MÉRIDA:</b> ELECTROSER Av Reforma No. 403Gx39 y 41 Mérida, Yucatán, México CP97000 Tel: (52) 999-925-1916 E-Mail: <a href="mailto:rrrb@sureste.com">rrrb@sureste.com</a>	<b>Oaxaca, Oax.:</b> CENTRO DE DISTRIBUCION Y SERVICIO, S.A. de C.V. Murguía # 708 P.A., Col. Centro, 68000, Oaxaca Tel: 01(52)95-15-15-22-22 Fax: 01(52)95-15-13-67-00 E-Mail: <a href="mailto:gpotai2001@hotmail.com">gpotai2001@hotmail.com</a>
<b>Tijuana:</b> STD Av Ferrocarril Sonora #3780 L-C Col 20 de Noviembre Tijuana, Mexico	<b>FOR USA SUPPORT:</b> ViewSonic® Corporation 381 Brea Canyon Road, Walnut, CA. 91789 USA Tel: 800-688-6688 E-Mail: <a href="http://www.viewsonic.com">http://www.viewsonic.com</a>





**ViewSonic®**