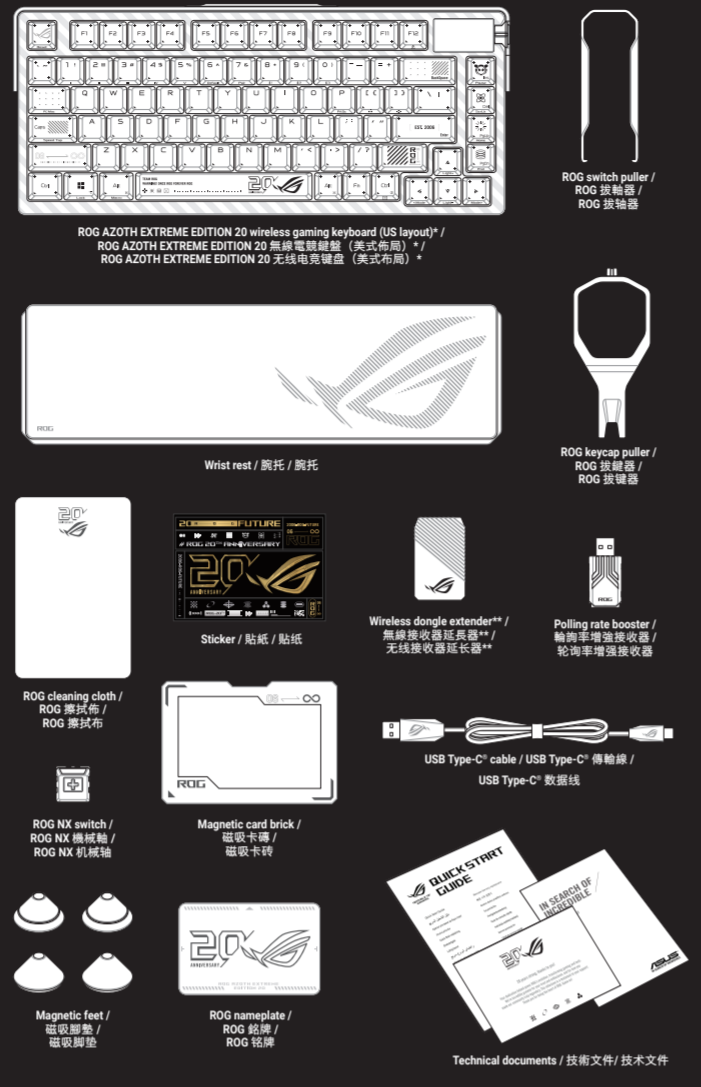




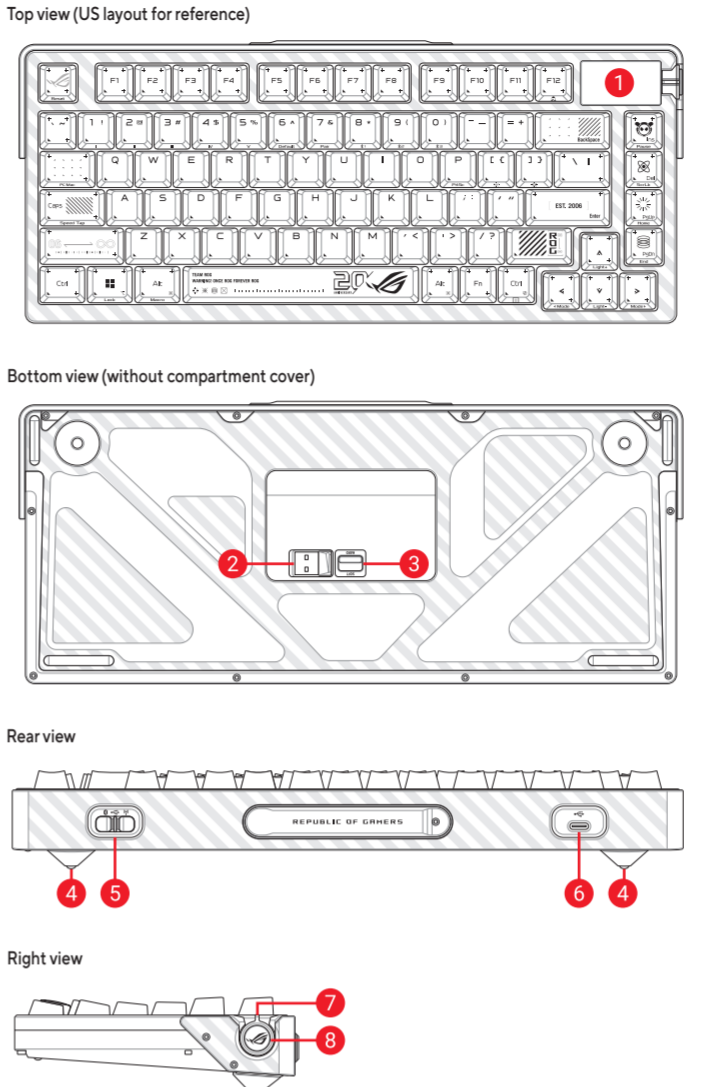
## Package Contents / 包裝內容物 / 包裝內容物



\* The illustration is for reference only. Actual product specifications may vary with models, such as keyboard layout. / 圖示僅供參考。實際產品規格 (如鍵盤佈局) 可能因型號而異。 / 图示仅供参考。实际产品规格 (如键盘布局) 可能因型号而异。

\*\* Only use the wireless dongle extender for the wireless dongle. / 無線接收器延長器僅可用於連接無線接收器。 / 无线接收器延长器仅可用于连接无线接收器。

## Keyboard features



- OLED touchscreen display / OLED 觸控螢幕 / OLED 触摸屏
- Magnetic dongle storage / 無線接收器磁吸收納 / 无线接收器磁吸收纳
- Gasket switch / Gasket 切換開關 / Gasket 切换开关
- Magnetic feet / 磁吸腳墊 / 磁吸脚垫
- Connection mode switch / 連線模式切換開關 / 连接模式切换开关
- USB Type-C® port / USB Type-C® 連接埠 / USB Type-C® 接口
- Control knob / 撥桿 / 拨杆
- Function switch button / 功能切換開關 / 功能切换开关

### Gear Link and Armoury Crate

Utilize Gear Link (<https://gearlink.asus.com>) or Armoury Crate software to update your keyboard's firmware and customize your keyboard.

### Setting up as a wireless keyboard

- Remove the wireless dongle from the keyboard.
- Insert the wireless dongle to a USB port on the PC.
- Set the connection mode switch to **RF 2.4GHz**.

### Setting up Bluetooth

- Toggle the connection mode switch to **Bluetooth mode**.
- Press and hold the **FN** and **7** keys for 3 seconds to begin Bluetooth pairing.
- Press **FN** and **8**, **FN** and **9**, or **FN** and **0** keys to switch between Bluetooth hosts.

### Gear Link et Armoury Crate

Utilisez le logiciel Gear Link (<https://gearlink.asus.com>) ou Armoury Crate pour mettre à jour le firmware et personnaliser votre clavier.

### Configurer en tant que clavier sans fil

- Retirez le dongle sans fil du clavier.
- Insérez le dongle sans fil dans un port USB de votre ordinateur.
- Réglez l'interrupteur de mode de connexion sur **RF 2.4GHz**.

### Configurer le Bluetooth

- Basculez l'interrupteur de mode de connexion en mode **Bluetooth**.
- Appuyez sur les touches **Fn** et **7** pendant 3 secondes pour commencer l'appairage Bluetooth.
- Appuyez sur les touches **Fn** et **8**, **Fn** et **9** ou **Fn** et **0** pour passer d'un hôte Bluetooth à l'autre.

### Gear Link und Armoury Crate

Nutzen Sie Gear Link unter <https://gearlink.asus.com> oder die Armoury Crate-Software, um die Firmware Ihrer Tastatur zu aktualisieren und Ihre Tastatur anzupassen.

### Einrichten als kabellose Tastatur

- Entfernen Sie den Wireless-Dongle von der Tastatur.
- Stecken Sie den Wireless-Dongle in einen USB-Anschluss am PC.
- Legen Sie den Schalter für den Verbindungsmodus auf **RF 2,4 GHz** Modus fest.

### Einrichten über Bluetooth

- Legen Sie den Schalter für den Verbindungsmodus auf **Bluetooth-Modus** fest.
- Halten Sie die **FN**-Taste und **7**-Taste für 3 Sekunden gedrückt, um die Bluetooth-Kopplung zu starten.
- Drücken Sie die **FN**- und **8**-Taste, **FN**- und **9**-Taste oder **FN**- und **0**-Taste, um zwischen den Bluetooth-Hosts zu wechseln.

### Collegamento Gear e Armoury Crate

Utilizza Gear Link (<https://gearlink.asus.com>) o il software Armoury Crate per aggiornare il firmware della tastiera e personalizzarla.

### Configurazione come tastiera wireless

- Rimuovere il dongle wireless dalla tastiera.
- Inserire il dongle wireless in una porta USB del PC.
- Impostare l'interruttore della modalità di connessione su **RF 2.4GHz**.

### Configurazione del Bluetooth

- Attivare l'interruttore di modalità di connessione in **modalità Bluetooth**.
- Premi e tieni premuti i tasti **FN** e **7** per 3 secondi per avviare l'associazione Bluetooth.
- Premi i tasti **FN** e **8**, **FN** e **9**, oppure **FN** e **0** per passare tra gli host Bluetooth.

### Gear Link e Armoury Crate

Utilize o Gear Link (<https://gearlink.asus.com>) ou o software Armoury Crate para atualizar o firmware do seu teclado e personalizá-lo.

### Configurando como um teclado sem fio

- Remova o dongle sem fio do teclado.
- Insira o dongle sem fio em uma porta USB no PC.
- Defina o interruptor do modo de conexão para **RF 2,4GHz**.

### Configurando o Bluetooth

- Altere o interruptor de modo de conexão para o **modo Bluetooth**.
- Pressione e segure as teclas **FN** e **7** por 3 segundos para iniciar o emparelhamento Bluetooth.
- Pressione as teclas **FN** e **8**, **FN** e **9**, ou **FN** e **0** para alternar entre os hosts Bluetooth.

### Gear Link i Armoury Crate

Skorzystaj z Gear Link (<https://gearlink.asus.com>) lub oprogramowania Armoury Crate, aby zaktualizować oprogramowanie układowe klawiatury i dostosować swoją klawiaturę.

### Konfiguracja klawiatury bezprzewodowej

- Wyjmij z klawiatury moduł połączenia bezprzewodowego.
- Włóż moduł połączenia bezprzewodowego do portu USB w komputerze.
- Ustaw przełącznik trybu połączenia w pozycji **RF 2,4GHz**.

### Konfiguracija Bluetooth

- Ustav prełącznik trybu polócenja w pozycji trybu **Bluetooth**.
- Nacišni i pritrži kljaviše **FN** oraz **7** przez 3 sekundy, aby rozpocząć parowanie Bluetooth.
- Nacišni kljaviše **FN** i **8**, **FN** i **9** lub **FN** i **0**, aby przełączyć się między hostami Bluetooth.

### Gear Link și Armoury Crate

Utilizați Gear Link (<https://gearlink.asus.com>) sau software-ul Armoury Crate pentru a actualiza firmware-ul tastaturii și pentru a personaliza tastatura.

### Configurare ca tastatură wireless

- Scoate dongle-ul wireless din tastatură.
- Introducerei adaptorul wireless în portul USB al PC-ului.
- Setați comutatorul modului de conexiune pe **RF 2,4GHz**.

### Configurarea Bluetoothului

- Comutați comutatorul modului de conexiune la **modul Bluetooth**.
- Apăsăți și țineți apăsată tastele **FN** și **7** timp de 3 secunde pentru a începe împerecherea Bluetooth.
- Apăsăți tastele **FN** și **8**, **FN** și **9**, sau **FN** și **0** pentru a comuta între gazdele Bluetooth.

### Gear Link y Armoury Crate

Utiliza Gear Link (<https://gearlink.asus.com>) o el software Armoury Crate k aktualizaci firmwaru vaší klávesnice a personalizarlo.

### Configuración como teclado inalámbrico

- Retire el dongle inalámbrico del teclado.
- Inserta el adaptador inalámbrico en un puerto USB del PC.
- Ajusta el interruptor de modo de conexión a **RF 2,4 GHz**.

### Configuración de Bluetooth

- Deslice el interruptor de modo de conexión a **modo Bluetooth**.
- Mantén pulsadas las teclas **FN** y **7** durante 3 segundos para iniciar el emparejamiento Bluetooth.
- Pulsa las teclas **FN** y **8**, **FN** y **9**, o **FN** y **0** para cambiar entre los hosts de Bluetooth.

### Gear Link и Armoury Crate

Используйте Gear Link (<https://gearlink.asus.com>) или программное обеспечение Armoury Crate для обновления прошивки вашей клавиатуры и ее настройки.

### Настройка в качестве беспроводной клавиатуры

- Извлеките беспроводной приемник из клавиатуры.
- Вставьте беспроводной донгл в USB-порт на ПК.
- Установите переключатель режима подключения в положение **RF 2.4GHz**.

### Настройка Bluetooth

- Переключите режим подключения на режим **Bluetooth**.
- Удерживайте клавиши **FN** и **7** в течение 3 секунд, чтобы начать сопряжение Bluetooth.
- Нажмите клавиши **FN** и **8**, **FN** и **9**, или **FN** и **0**, чтобы переключиться между Bluetooth-хостами.

### Gear Link a Armoury Crate

Použite Gear Link (<https://gearlink.asus.com>) alebo softvér Armoury Crate na aktualizáciu firmvéru vašej klávesnice a jej prispôbenie.

### Nastavenie ako bezdrôtová klávesnica

- Odstaňte bezdrôtový prijímač z klávesnice.
- Vložte bezdrôtový adaptér do portu USB na počítači.
- Nastavte prepínač režimu pripojenia na **RF 2,4 GHz**.

### Nastavienie Bluetoothu

- Prepniťe prepínač režimu pripojenia na **režim Bluetooth**.
- Nacišite a podržte klávesy **FN** a **7** po dobu 3 sekund na splnenie párovania cez Bluetooth.
- Nacišite klávesy **FN** a **8**, **FN** a **9**, alebo **FN** a **0**, aby ste prepínali medzi hosťmi Bluetooth.

### 使用 Gear Link 和 Armoury Crate

使用 Gear Link (<https://gearlink.asus.com/tw>) 或 Armoury Crate 軟體，更新您的鍵盤韌體並自訂您的鍵盤。

### 設定為無線鍵盤

- 取下鍵盤上的無線接收器。
- 將無線接收器連接到電腦的 **USB** 連接埠。
- 將連線模式切換開關撥至 **RF 2.4GHz**。

### 設定藍牙

- 將連線模式切換開關撥至 **藍牙** 模式。
- 按下 **FN** 鍵和 **7** 鍵 3 秒，開始藍牙配對。
- 按下 **FN** 鍵和 **8** 鍵、**FN** 鍵和 **9** 鍵，或 **FN** 鍵和 **0** 鍵，以在不同藍牙主機裝置間切換。

### Gear Link ve Armoury Crate

Gear Link'i (<https://gearlink.asus.com>) veya Armoury Crate yazılımını kullanarak klavyenizin ürün yazılımını güncelleyebilir ve klavyenizi özelleştirebilirsiniz.

### Kablosuz klavye olarak ayarlama

- Klavyeden kablosuz alıcıyı çıkarın.
- Kablosuz dongle'i PC'deki bir USB portuna takın.
- Bağlantı modu anahtarını **RF 2.4GHz** olarak ayarlayın.

### Bluetooth ayarlarını yapmak

- Bağlantı modu düğmesini **Bluetooth** moduna getirin.
- Bluetooth eşleştirmesini başlatmak için **FN** ve **7** tuşlarına 3 saniye boyunca basılı tutun.
- Bluetooth ana bilgisayarlar arasında geçiş yapmak için **FN** ve **8**, **FN** ve **9** veya **FN** ve **0** tuşlarına basın.

### Gear Link ja Armoury Crate

Hyödynnä Gear Link (<https://gearlink.asus.com>) tai Armoury Crate -ohjelmaista päivittääksesi näppäimistön laitteiston ja mukauttaaksesi näppäimistöäsi.

### Aseta langattoman näppäimistönä

- Irrota langaton käyttöavain näppäimistöästä.
- Liitä langaton käyttöavain tietokoneen USB-porttiin.
- Aseta yhteystilan kytkin **RF 2,4 GHz**:iin.

### Bluetoothin asetus

- Vaihda yhteystilakytkin **Bluetooth**-tilaan.
- Paina ja pidä **FN**-ja **7**-näppäimiä painettuna 3 sekunnin ajan aloittaaksesi Bluetooth-paillitoksen.
- Paina **FN** ja **8**, **FN** ja **9** tai **FN** ja **0**-näppäimiä vaihtaaksesi Bluetooth-isäntien välillä.

### Gear Link och Armoury Crate

Använd Gear Link (<https://gearlink.asus.com>) eller Armoury Crate-programvaran för att uppdatera tangentbordets firmware och anpassa tangentbordet.

### Installera som ett trådlöst tangentbord

- Ta bort donglen för trådlös anslutning från tangentbordet.
- Sätt i donglen för trådlös anslutning i en USB-port på datorn.
- Ställ in anslutningslägesomkopplaren på **RF 2.4GHz**.

### Ställa in Bluetooth

- Ställ anslutningslägesomkopplaren på **Bluetooth**-läge.
- Tryck och håll ned tangenterna **FN** och **7** i 3 sekunder för att starta Bluetooth-parning.
- Tryck på **FN** och **8**, **FN** och **9**, eller **FN** och **0**-tangenterna för att växla mellan Bluetooth-värder.

### 使用 Gear Link 和 Armoury Crate

使用 Gear Link (<https://gearlink.asus.com/cn>) 或 Armoury Crate 軟體，更新您的鍵盤固件并自定义您的键盘。

### 设置为无线键盘

- 取下键盘上的无线接收器。
- 将无线接收器连接到电脑的 **USB** 接口。
- 将连接模式切换开关拨至 **RF 2.4GHz**。

### 设置蓝牙

- 将连接模式切换开关拨至 **蓝牙** 模式。
- 按住 **FN** 键和 **7** 键 3 秒，开始蓝牙配對。
- 按下 **FN** 键和 **8** 键、**FN** 键和 **9** 键，或 **FN** 键和 **0** 键，以在不同蓝牙主机装置间切换。

### Gear Link a Armoury Crate

Využijte Gear Link (<https://gearlink.asus.com>) nebo software Armoury Crate k aktualizaci firmwaru vaší klávesnice a přizpůsobení vaší klávesnice.

### Nastavení jako bezdrátová klávesnice

- Odstaňte bezdrátový dongle z klávesnice.
- Vložte bezdrátový dongle do USB portu na počítači.
- Nastavte prepínač režimu připojení na **RF 2,4 GHz**.

### Nastavienie Bluetooth

- Prepniťe prepínač režimu pripojenia do **režimu Bluetooth**.
- Stiskněte a podržte klávesy **FN** a **7** po dobu 3 sekund pro zahájení párování Bluetooth.
- Stiskněte **FN** a **8**, **FN** a **9** nebo **FN** a **0** pro přepnutí mezi Bluetooth hostiteli.

### Gear Link és Armoury Crate

Használja a Gear Linket (<https://gearlink.asus.com>) vagy az Armoury Crate szoftvert a billentyűzet firmware-ének frissítéséhez és a billentyűzet testreszabásához.

### Beállítás vezeték nélküli billentyűzetként

- Távolítsa el a vezeték nélküli kulcsot a billentyűzetről.
- Helyezze be a vezeték nélküli kulcsot a PC egyik USB portjába.
- Állítsa a kapcsolódási mód kapcsolóját **RF 2,4 GHz**-re.

### A Bluetooth beállítás

- Állítsa a kapcsolódási mód kapcsolót **Bluetooth**-módra.
- Nyomja meg és tartsa lenyomva az **FN** és a **7** billentyűt 3 másodpercig a Bluetooth-párosítás megkezdéséhez.
- Nyomja meg az **FN** és a **8**, az **FN** és a **9**, vagy az **FN** és a **0** billentyűket a Bluetooth-gazdák közötti váltáshoz.

### Gear Link та Armoury Crate

Використовуйте програмне забезпечення Gear Link (<https://gearlink.asus.com>) або Armoury Crate, щоб оновити мікропрограму клавіатури та налаштувати її під ваші потреби.

### Налаштування бездротової клавіатури

- Вийміть з клавіатури бездротовий ключ.
- Вставте бездротовий ключ до порту USB на ПК.
- Перемикач режиму підключення встановіть на радіочастоту **2,4 ГГц**.

### Налаштування Bluetooth

- Переведіть перемикач режим підключення в режим **Bluetooth**.
- Утримуйте натиснутими клавіші **FN** та **7** протягом 3 секунд, щоб розпочати з'єднання через Bluetooth.
- Натисніть клавіші **FN** та **8**, **FN** та **9** або **FN** та **0**, щоб перемикався між пристроями Bluetooth.

### Gear Link 및 Armoury Crate

Gear Link (<https://gearlink.asus.com>) 또는 Armoury Crate 소프트웨어를 사용하여 키보드의 펌웨어를 업데이트하고 키보드를 사용자 지정하십시오.

### 무선 키보드로서 설정하기

- 키보드에서 무선 동글을 제거합니다.
- 무선 동글을 PC의 USB 포트에 끼웁니다.
- 연결 모드 스위치를 **RF 2.4GHz**로 설정합니다.

### 블루투스 설정하기

- 연결 모드 스위치를 **Bluetooth** 모드로 전환합니다.
- 블루투스 페어링을 시작하려면 **FN** 키와 **7** 키를 3초 동안 누르고 있으십시오.
- FN** 키와 **8** 키, **FN** 키와 **9** 키, 또는 **FN** 키와 **0** 키를 눌러 블루투스 호스트를 전환합니다.

### Gear Link en Armoury Crate

Gebruik Gear Link (<https://gearlink.asus.com>) of Armoury Crate-software om de firmware van uw toetsenbord bij te werken en uw toetsenbord aan te passen.

### Instellen als een draadloos toetsenbord

- Verwijder de draadloze dongle uit het toetsenbord.
- Sluit de draadloze dongle aan op een USB-poort op de pc.
- Zet de schakelaar van het verbindingsmodus op **RF 2.4GHz**.

### Bluetooth instellen

- Zet de verbindingsmodus schakelaar op de **Bluetooth**-modus.
- Houd de toetsen **FN** en **7** 3 seconden ingedrukt om Bluetooth-pairing te starten.
- Druk op **FN** en **8**, **FN** en **9**, of **FN** en **0** toetsen om tussen Bluetooth-hosts te schakelen.

### Gear Link and Armoury Crate

Bruk Gear Link (<https://gearlink.asus.com>) eller Armoury Crate-programvare for å oppdatere tastaturets fastvare og tilpasse tastaturet ditt.

### Sette opp som et trådløst tastatur

- Ta ut trådløsdonglen fra tastaturet.
- Sett trådløsdonglen inn i en USB-port på PC-en.
- Sett tilkoblingsmodusbytteren til **RF 2,4 GHz**.

### Sette opp Bluetooth

- Sett tilkoblingsmodusbytteren til **Bluetooth**-modus.
- Trykk og hold inne **FN** og **7**-tastene i 3 sekunder for å starte Bluetooth-paring.
- Trykk på **FN** og **8**, **FN** og **9**, eller **FN** og **0** for å bytte mellom Bluetooth-verter.

### Armoury Crate ʁ Gear Link

استخدم Gear Link (<https://gearlink.asus.com>) أو برنامج Armoury Crate لتحديث برنامج لوحة المفاتيح الثابت وتخصيص لوحة المفاتيح الخاصة.

### إعداد لوحة مفاتيح لاسلكية

- قم بإزالة الدونجل اللاسلكي من لوحة المفاتيح.
- أدخل الدونجل اللاسلكي في منفذ USB على الكمبيوتر.
- اضبط وضع الاتصال على **RF 2.4GHz**.

### Bluetooth إعداد

- قم بتبديل مفتاح وضع الاتصال إلى وضع **Bluetooth**.
- اضغط مع الاستمرار على مفتاحي **FN** و **7** لمدة 3 ثوانٍ لبدء البحث عن المضيفين.
- اضغط على **FN** و <

<b>Bluetooth</b>	<b>Armoury Crate-liko 7-liko</b>
<ol style="list-style-type: none"><li>העבר את מת מצב החיבור למצב Bluetooth</li></ol>	<p>השתמשו ב-Gear Link (<a href="https://gearlink.asus.com">https://gearlink.asus.com</a>) או באזכנת Armoury Crate כדי לעדכן את הוויסות של המקלדת שלכם ולהאמץ משיע את המקלדת.</p> <p><b>הגדרה במקלדת אלחוטית</b></p> <ol style="list-style-type: none"><li>הסר את התמאם האלחוטי מהמקלדת.</li> <li>חבר את התמאם האלוטיוי לציאת USB בלב החתשוב.</li> <li>הגדר את מת מצב החיבור ל- <b>RF 2.4GHz</b>.</li></ol>
<ol style="list-style-type: none"><li>חלון הוויזיוקי את המקסיס <b>FN 7</b> למשך 3 שניות כדי להתחיל במודם בלוטות.</li> <li>חלן לע <b>FN</b> ועל <b>FN 8</b> ועל <b>FN 9</b> או <b>FN 0</b> כדי לבורר בין מאדרי Bluetooth</li></ol>	
	

**Gear Link dan Armoury Crate**

Gunakan Gear Link (<https://gearlink.asus.com>) atau perangkat lunak Armoury Crate untuk memperbaiki firmware keyboard Anda dan menyesuaikan keyboard Anda.

**הגדרה כמקלדת אלחוטית**

- Lepas dongle nirkabel dari keyboard.
- Masukkan dongle nirkabel ke port USB yang ada di PC.
- Atur sakelar mode koneksi ke RF 2,4 GHz




## Key combinations

On-the-fly Macro Recording	
Step 1: Fn + Left-ALT to start recording	
Step 2: Enter the keys to be recorded as a macro	
Step 3: Fn + Left-ALT to end recording	
Step 4: Assign Macro Key to the Main Layer or Fn Layer (Macro key can be assigned to both layers at the same time) <ul style="list-style-type: none"><li>Main Layer: Press any valid key to assign Macro Key.</li> <li>Fn Layer: Press and hold Fn key + any valid key to assign Macro Key.</li></ul>	
Profile Switch	
Fn + 1 / 2 / 3 / 4 / 5 / 6* <ul style="list-style-type: none"><li>6 is default</li></ul>	
Light Effect Switch	
Fn + Right or Fn + Left	
Brightness Level	
Fn + Up: Brightness up <p>Fn + Down: Brightness down</p>	Fn + [ : Screen Brightness down <p>Fn + ]: Screen Brightness up</p>
Factory Default	
Fn + Esc: Hold these two buttons until the LEDs blink and strobe green.	
Function Keys	
Fn + Ins: Pause <p>Fn + Del: Scroll Lock</p>	Fn + Tab: Mac/PC mode <p>Fn + F12: Stealth</p>
Fn + PgUp: Home <p>Fn + PgDn: End</p>	Fn + R-Ctrl: Menu <p>Fn + Caps: Hold these two keys for 1 second, Speed Tap on/off</p>
Fn + P: Print screen	

## OLED touchscreen display

The OLED touchscreen display will show the current settings and items enabled/disabled.



電力來源符合 LPS

面板不會長時間觀看





Functions			
<b>A</b>	Caps Lock	<b>D</b>	Connection Status
<b>B</b>	Scroll Lock	<b>E</b>	Battery Status
<b>C</b>	Current Profile	<b>F</b>	Mac mode / PC mode

Please refer to the table below for the different gestures supported on the OLED touchscreen display.

Double tap action
Hide/Display status/function icons on the left and right sides of the display
Swipe left/right action
Switch between display modes: <ul style="list-style-type: none"><li>Animation <ul style="list-style-type: none"><li>Date and Time (needs to be enabled in software)</li> <li>HW Info (needs to be enabled in software)</li></ul></li> <li>Laptop Battery (needs to be enabled in software)</li> <li>KPS (Keystrokes Per Second)</li></ul>
Swipe up/down action
<ul style="list-style-type: none"><li><b>KPS:</b> Reset KPS count</li> <li><b>Other:</b> Switch between display modes</li></ul>

## Control knob and Function switch button

Press the function switch button **(A)** to rotate between modes, you can check the currently selected mode on the OLED display. You can then use the control knob to adjust the settings for each function **(B C D)**. Please refer to the table below for the different modes:

<b>A</b>	<b>B</b>	<b>C</b>	<b>D</b>
			
Modes			
Media Control (Volume)	Brightness adjustment (OLED display)		
Media Control (Track)	Lighting effects switch		
Brightness adjustment (Per key)	Customization		

## Gasket switch

The gasket switch on the bottom of the keyboard allows you to toggle between two different gasket mount stiffness feels. To toggle the gasket switch:

- Flip the keyboard over and locate the nameplate.
- Press down on the top part of the nameplate so that the other end of the nameplate flips up then remove the nameplate.
- Toggle the gasket switch to adjust the feel of the keyboard keys.

## Safety Guidelines

Keep the device away from liquid, humidity, or moisture. Operate the device only within the specific temperature range of 0°C(32°F) to 45°C(113°F). When the device exceeds the maximum temperature, unplug or switch off the device to let it cool down.

The power delivered by the charger must be between min. 3.5 Watts required by the radio equipment, and max. 4.5 Watts in order to achieve the maximum charging speed.

付属品は当該専用品です。他の機器には使用しないでください。機器の破損もしくは、火災や感電の原因となることがあります。

## 安全說明

- 此產品只應在溫度不高於 45°C (113°F) 的環境下使用。
- 安裝錯誤型號的電池可能會導致爆炸。

本产品为微功率设备，消费者使用时应遵守以下规范，以免造成危害或损伤。

- (一) 本产品2.4G微功率模式使用频率为:2400-2483.5MHz,发射功率限值: 10mW(e.i.r.p) ，频率容限: 75kHz 搭载2.4GHz无线技术，透过USB Dongle配对连接PC，提供低延迟音频传输，符合“微功率短距离无线电发射设备目录和技术要求”；
- (二) 不得擅自改变使用场景或使用条件、扩大发射频率范围、加大发射功率（包括额外加装射频功率放大器），不得擅自更改发射天线；
- (三) 不得对其他合法的无线电台（站）产生有害干扰，也不得提出免受有害干扰保护；
- (四) 应当承受辐射射频能量的工业、科学及医疗（ISM）应用设备的干扰或其他合法的无线电台（站）干扰；
- (五) 如对其他合法的无线电台（站）产生有害干扰时，应立即停止使用，并采取措施消除干扰后方可继续使用；
- (六) 在航空器内和依据法律法规、国家有关规定、标准制定的射电天文台、气象雷达站、卫星地球站（含测控、测距、接收、导航站）等民用无线电台（站）、机场等的电磁环境保护区域内使用微功率设备，应当遵守电磁环境保护及相关行业主管部门的规定；
- (七) 禁止在在机场跑道中心点为圆心、半径5000米的区域范围内使用各类型遥控器；
- (八) 本产品使用时工作温度为0~45度，工作电压3.4-4.2V。

## Notices

**Limitation of Liability**

Circumstances may arise where because of a default on ASUS' part or other liability, you are entitled to recover damages from ASUS. In each such instance, regardless of the basis on which you are entitled to claim damages from ASUS, ASUS is liable for no more than damages for bodily injury (including death) and damage to real property and tangible personal property, or any other actual and direct damages resulting from omission or failure of performing legal duties under this Warranty Statement, up to the listed contract price of each product.

ASUS will only be responsible for or indemnify you for loss, damages or claims based in contract, tort or infringement under this Warranty Statement.

This limit also applies to ASUS' suppliers and its reseller. It is the maximum for which ASUS, its suppliers, and your reseller are collectively responsible.

UNDER NO CIRCUMSTANCES IS ASUS LIABLE FOR ANY OF THE FOLLOWING: (1) THIRD-PARTY CLAIMS AGAINST YOU FOR DAMAGES; (2) LOSS OF, OR DAMAGE TO, YOUR RECORDS OR DATA; OR (3) SPECIAL, INCIDENTAL, OR INDIRECT DAMAGES OR FOR ANY ECONOMIC CONSEQUENTIAL DAMAGES (INCLUDING LOST PROFITS OR SAVINGS), EVEN IF ASUS, ITS SUPPLIERS OR YOUR RESELLER IS INFORMED OF THEIR POSSIBILITY.

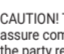
#### Federal Communications Commission Statement

This device complies with Part 15 of the FCC Rules. Operation is subject to the following two conditions:

- This device may not cause harmful interference.
- This device must accept any interference received including interference that may cause undesired operation.

This equipment has been tested and found to comply with the limits for a Class B digital device, pursuant to Part 15 of the FCC Rules. These limits are designed to provide reasonable protection against harmful interference in a residential installation. This equipment generates, uses and can radiate radio frequency energy and, if not installed and used in accordance with manufacturer's instructions, may cause harmful interference to radio communications. However, there is no guarantee that interference will not occur in a particular installation. If this equipment does cause harmful interference to radio or television reception, which can be determined by turning the equipment off and on, the user is encouraged to try to correct the interference by one or more of the following measures:

- Reorient or relocate the receiving antenna.
- Increase the separation between the equipment and receiver.
- Connect the equipment to an outlet on a circuit different from that to which the receiver is connected.
- Consult the dealer or an experienced radio/TV technician for help.

	CAUTION! The use of shielded cables for connection of the monitor to the graphics card is required to assure compliance with FCC regulations. Changes or modifications to this unit not expressly approved by the party responsible for compliance could void the user's authority to operate this equipment.
---	---

#### Compliance Statement of Innovation, Science and Economic Development Canada (ISED)

This device complies with Innovation, Science and Economic Development Canada licence exempt RSS standard(s). Operation is subject to the following two conditions: (1) this device may not cause interference, and (2) this device must accept any interference, including interference that may cause undesired operation of the device.

CAN ICES(B)/NMB(B)

#### Déclaration de conformité d'Innovation, Sciences et Développement économique Canada (ISED)

Le présent appareil est conforme aux CNR d'Innovation, Sciences et Développement économique Canada applicables aux appareils radio exempts de licence. L'exploitation est autorisée aux deux conditions suivantes: (1) l'appareil ne doit pas produire de brouillage, et (2) l'utilisateur de l'appareil doit accepter tout brouillage radioélectrique subi, même si le brouillage est susceptible d'en compromettre le fonctionnement.

CAN ICES(B)/NMB(B)

#### Précautions d'emploi de l'appareil :

- Soyez particulièrement vigilant quant à votre sécurité lors de l'utilisation de cet appareil dans certains lieux (les aéroports, les hôpitaux, les stations-service et les garages professionnels).
- Évitez d'utiliser cet appareil à proximité de dispositifs médicaux implantés lors d'un appel téléphonique. Si vous portez un implant électronique (stimulateurs cardiaques, pompes à insuline, neurostimulateurs...), veuillez impérativement respecter une distance minimale de 15 centimètres entre cet appareil et l'implant pour réduire les risques d'interférence.
- Utilisez cet appareil dans de bonnes conditions de réception pour minimiser le niveau de rayonnement. Ce n'est pas toujours le cas dans certaines zones ou situations, notamment les parkings souterrains, les ascenseurs, en train ou en voiture ou tout simplement dans un secteur mal couvert par le réseau.
- Tenez cet appareil à distance du ventre des femmes enceintes et du bas-ventre des adolescents.

#### ASUS Recycling/Takeback Services

ASUS recycling and takeback programs come from our commitment to the highest standards for protecting our environment. We believe in providing solutions for you to be able to responsibly recycle our products, batteries, other components as well as the packaging materials. Please go to <https://esg.asus.com/en/Takeback.htm> for detailed recycling information in different regions.

#### REACH

Complying with the REACH (Registration, Evaluation, Authorisation, and Restriction of Chemicals) regulatory framework, we published the chemical substances in our products at ASUS REACH website at <https://esg.asus.com/Compliance.htm>.

#### Radio Frequency (RF) Exposure Information

The radiated output power of the Wireless Device is below the Innovation, Science and Economic Development Canada (ISED) radio frequency exposure limits. The Wireless Device should be used in such a manner such that the potential for human contact during normal operation is minimized.

This device has also been evaluated and shown compliant with the ISED RF Exposure limits under portable exposure conditions. (antennas are less than 20 cm of a person's body).

#### Informations concernant l'exposition aux fréquences radio (RF)

La puissance de sortie rayonnée du dispositif sans fil est inférieure aux limites d'exposition aux radiofréquences d'Innovation, Sciences et Développement économique Canada (ISED). Le dispositif sans fil doit être utilisé de manière à minimiser le potentiel de contact humain pendant le fonctionnement normal.

Cet appareil a également été évalué et montré conforme aux limites d'exposition RF ISED dans des conditions d'exposition portable. (les antennes mesurent moins de 20 cm du corps d'une personne).

#### Proper disposal



The Waste Electrical and Electronic Equipment (WEEE) Directive (Directive 2012/19/EU) is a European Union law that aims to reduce the environmental impact of electrical and electronic equipment. It mandates producers to take responsibility for the end-of-life management of their products, promoting collection, treatment, and recycling to minimize waste and encourage resource recovery.

Do not throw your electrical and electronic equipment in municipal waste.

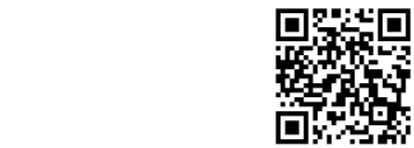
The symbol of the crossed-out wheeled bin on the product or packaging indicates that this product (including any batteries it contains) must not be disposed of with your household waste.

To prevent potential harm to the environment and human health, a collection framework should be used to return, recycle, and recover waste electrical and electronic equipment (WEEE), and this product has been designed to enable the reuse of parts and facilitate the recycling of certain materials.

Improper disposal may involve risks due to the presence of hazardous substances within electrical and electronic equipment, such as lead and BFR and other harmful components.

Check your local recycling services for electronic products.
(<https://esg.asus.com/en/circular-economy/resource-regeneration/global-take-back-service>)

For more information on the multi-language version please scan below:



DO NOT throw the device in fire. DO NOT short circuit the contacts. DO NOT disassemble the device.

#### RF exposure warning

The equipment complies with FCC RF exposure limits set forth for an uncontrolled environment. The equipment must not be co-located or operating in conjunction with any other antenna or transmitter.



电子电气产品有有害物质限制使用标识：图中之数字为产品之环保使用期限，仅指电子电气产品中含有的有害物质不致发生外泄或突变，从而对环境造成污染或对人身、财产造成严重损害之期限。

有害物质	印刷电路板及电子组件	塑胶外壳	按键	外部信号连接器及线材等
铅 (Pb)	x	○	○	○
汞 (Hg)	○	○	○	○
镉 (Cd)	○	○	○	○
六价铬 (Cr(VI))	○	○	○	○
多溴联苯 (PBB)	○	○	○	○
多溴二苯醚 (PBDE)	○	○	○	○
邻苯二甲酸二正丁酯 (DBP)	○	○	○	○
邻苯二甲酸二(2-乙基)己基酯 (DEHP)	○	○	○	○
邻苯二甲酸丁二酯 (BBP)	○	○	○	○
邻苯二甲酸二异丁酯 (DIBP)	○	○	○	○

本表格根据 SJ/T 11364 的规定编制。

○：表示该有害物质在该部件所有均质材料中的含量均在 GB/T 26572 规定的限量要求以下。

x：表示该有害物质至少在该部件的某一均质材料中的含量超过 GB/T 26572 规定的限量要求，然该部件仍符合欧盟指令 2011/65/EU 的规范。

备注：此产品所标示的环保使用期限，系指在一般正常使用状况下。

「產品之限用物質含有情況」之相關資訊，請參考下表：

單元	限用物質及其化學符號					
	鉛 (Pb)	汞 (Hg)	鎘 (Cd)	六價鉻 (Cr(VI))	多溴聯苯 (PBB)	多溴二苯醚 (PBDE)
印刷電路板及電子组件	—	○	○	○	○	○
塑膠外殼	○	○	○	○	○	○
按键	○	○	○	○	○	○
外部信號連接埠及线材等	○	○	○	○	○	○


備考1. "○"係指該項限用物質之百分比含量未超出百分比含量基準值。

備考2. "—"係指該項限用物質為排除項目。

#### NCC: Wireless Statement

取得審驗證明之低功率射頻器材，非經核准，公司、商號或使用者均不得擅自變更頻率、加大功率或變更原設計之特性及功能。低功率射頻器材之使用不得影響飛航安全及干擾合法通信；經發現有干擾現象時，應立即停用，並改善至無干擾時方得繼續使用。前述合法通信，指依電信管理法規作業之無線電通信。低功率射頻器材須符合合法通信或工業、科學及醫療用電波輻射性電機設備之干擾。

#### KC: Korea Warning Statement

	<p>B 급 기기 (가정용 방송통신기자재)</p> <p>이 기기는 가정용 (B 급) 전자파적합기기로서 주로 가정에서 사용하는 것을 목적으로 하며, 모든 지역에서 사용할 수 있습니다.</p>	<b>Complies with IMDA Standards DB103778</b>	This ASUS product complies with IMDA Standards.
---	---	--	---

#### France sorting and recycling information

	<b>FR</b>	<b>Cet appareil se recycle</b>		<b>Points de collecte sur <a href="http://www.quefairemedesdechets.fr">www.quefairemedesdechets.fr</a></b> Privilégiez la réparation ou le don de votre appareil !
			<b>À DÉPOSER EN MAGASIN</b>	<b>À DÉPOSER EN DÉCHÈTERIE</b>

<b>Lithium-Ion Battery Warning</b>	<b>鋰金屬電池安全警告</b>
<b>CAUTION:</b> Danger of explosion if battery is incorrectly replaced. Replace only with the same or equivalent type recommended by the manufacturer. Dispose of used batteries according to the manufacturer's instructions.	電池如果更換不正確，會有爆炸的危險。請依照製造商說明書使用相同或同款式電池，並請依照製造商指示處理用過的電池。

#### Ukraine Certification Logo



#### EAC Certification Logo



#### USB Charging

The power delivery by the charger must be between min 3.5 Watts required by the radio equipment, and max 4.5 Watts in order to achieve maximum charging speed.

**3.5 – 4.5 W**

#### UKCA RF Output table (The Radio Equipment Regulations 2017)

Function	Frequency	Maximum Output Power EIRP (mW)
2.4GHz wireless	(2.4-2.4835GHz)- Keyboard	< 100
	(2.4-2.4835GHz) - Dongle	< 100
Bluetooth	(2.4-2.4835GHz) - Keyboard	< 100

#### CE RED RF Output table (Directive 2014/53/EU)

Function	Frequency	Maximum Output Power EIRP (mW)
2.4GHz wireless	(2.4-2.4835GHz) - Keyboard	< 100
	(2.4-2.4835GHz) - Dongle	< 100
Bluetooth	(2.4-2.4835GHz) - Keyboard	< 100

#### Simplified UKCA Declaration of Conformity

ASUSTek Computer Inc. hereby declares that this device is in compliance with the essential requirements and other relevant provisions of The Radio Equipment Regulations 2017 (S.I. 2017/1206). Full text of UKCA declaration of conformity is available at <https://www.asus.com/support/>.

## CE Mark Warning



**English** ASUSTeK Computer Inc. hereby declares that this device is in compliance with the essential requirements and other relevant provisions of related Directives. Full text of EU declaration of conformity is available at: [www.asus.com/support](http://www.asus.com/support/)

**Français** ASUSTek Computer Inc. déclare par la présente que cet appareil est conforme aux critères essentiels et autres clauses pertinentes des directives concernées. La déclaration de conformité de l'UE peut être téléchargée à partir du site Internet suivant : [www.asus.com/support](http://www.asus.com/support/)

**Deutsch** ASUSTeK Computer Inc. erklärt hiermit, dass dieses Gerät mit den wesentlichen Anforderungen und anderen relevanten Bestimmungen der zugehörigen Richtlinien übereinstimmt. Der gesamte Text der EU-Konformitätserklärung ist verfügbar unter: [www.asus.com/support](http://www.asus.com/support/)

**Italiano** ASUSTeK Computer Inc. con la presente dichiara che questo dispositivo è conforme ai requisiti essenziali e alle altre disposizioni pertinenti con le direttive correlate. Il testo completo della dichiarazione di conformità UE è disponibile all'indirizzo: [www.asus.com/support](http://www.asus.com/support/)

**Русский** Компания ASUS заявляет, что это устройство соответствует основным требованиям и другим соответствующим условиям соответствующих директив. Подробную информацию, пожалуйста, смотрите на: [www.asus.com/support](http://www.asus.com/support/)

**Български** С настоящото ASUSTeK Computer Inc. декларира, че това устройство е в съответствие със съществените изисквания и другите релевантни текст на декларацията за съответствие на ЕС е достъпна на адрес: [www.asus.com/support](http://www.asus.com/support/)

**Português** A ASUSTEK Computer Inc. declara que este dispositivo está em conformidade com os requisitos essenciais e outras disposições relevantes das Diretivas relacionadas. O texto integral da declaração da UE disponível em: [www.asus.com/support](http://www.asus.com/support/)

**Polski** Firma ASUSTEK Computer Inc. niniejszym oświadcza, że urządzenie to jest zgodne z zasadniczymi wymogami i innymi właściwymi postanowieniami powiązanych dyrektyw. Pełny tekst deklaracji zgodności UE jest dostępny pod adresem: [www.asus.com/support](http://www.asus.com/support/)

**Português** A ASUSTEK Computer Inc. declara que este dispositivo está em conformidade com os requisitos essenciais e outras disposições relevantes das Diretivas relacionadas. O texto integral da declaração da UE disponível em: [www.asus.com/support](http://www.asus.com/support/)

**Română** ASUSTEK Computer Inc. declară că acest dispozitiv se conformează cerințelor esențiale și altor prevederi relevante ale directivei conexe. Textul complet al declarației de conformitate a Uniunii Europene se găsește la: [www.asus.com/support](http://www.asus.com/support/)

**Srpski** ASUSTEK Computer Inc. ovim izjavljuje da je ovaj uređaj u saglasnosti sa osnovnim zahtevima i drugim relevantnim odredbama povezanih direktiva. Puni tekst EU deklaracije o usaglasnosti je dostupan da adres: [www.asus.com/support](http://www.asus.com/support/)

**Slovensky** Spoločnosť ASUSTEK Computer Inc. týmto vyhlasuje, že toto zariadenie vyhovuje základným požiadavkám a ostatným príslušným ustanoveniam príslušných smerníc. Celý text vyhlásenia o zhode pre štáty EÚ je dostupný na adrese: [www.asus.com/support](http://www.asus.com/support/)

**Slovenščina** ASUSTEK Computer Inc. izjavlja, da je ta naprava skladna z bistvenimi zahtevami in drugimi ustreznimi določbami povezanih direktiv. Celotno besedilo EU izjave o skladnosti je na voljo na spletnem mestu: [www.asus.com/support](http://www.asus.com/support/)

**Dansk** ASUSTEK Computer Inc. erklærer hermed, at denne enhed er i overensstemmelse med hovedkravene og andre relevante bestemmelser i de relaterede direktiver. Hele EU-overensstemmelseserklæringen kan findes på: [www.asus.com/support](http://www.asus.com/support/)

**Nederlands** ASUSTEK Computer Inc. verklaart hierbij dat dit apparaat voldoet aan de essentiële vereisten en andere relevante bepalingen van de verwante richtlijnen. De volledige tekst van de EU-verklaring van conformiteit is beschikbaar op: [www.asus.com/support](http://www.asus.com/support/)

**Eesti** Käesolevaga kinnitab ASUSTEK Computer Inc, et see seade vastab asjakohaste direktiivide oluliste nõuetele ja teiste asjassepuutuvatele sätetele. EL vastavusdeklaratsiooni täielik tekst on saadaval järgmisel aadressil: [www.asus.com/support](http://www.asus.com/support/)

**Suomi** ASUSTEK Computer Inc