



MASTER LEDtube EM/Mains T8

MAS LEDtube 1500mm UE 21.5W 840 T8

The Philips MASTER LEDtube integrates a LED light source into a traditional fluorescent form factor. Its unique design creates a perfectly uniform visual appearance which cannot be distinguished from traditional fluorescent. For those that are looking for value for money within limited budget and re-lamping efforts for better light effect and lifetime.

Product data

General Information	
Cap-Base	G13 [Medium Bi-Pin Fluorescent]
Nominal Lifetime (Nom)	60000 h
Switching Cycle	200000X
B50L70	60000 h
Light Technical	
Color Code	840 [CCT of 4000K]
Luminous Flux (Nom)	3700 lm
Luminous Flux (Rated) (Nom)	3700 lm
Correlated Color Temperature (Nom)	4000 K
Color Consistency	<6
Color Rendering Index (Nom)	83
LLMF At End Of Nominal Lifetime (Nom)	70 %
Operating and Electrical	
Input Frequency	50 to 60 Hz
Power (Rated) (Nom)	21.5 W
Lamp Current (Max)	111 mA

Lamp Current (Min)	83 mA
Starting Time (Nom)	0.5 s
Warm Up Time To 60% Light (Nom)	0.5 s
Power Factor (Nom)	0.9
Voltage (Nom)	220-240 V
Temperature	
T-Ambient (Max)	45 °C
T-Ambient (Min)	-20 °C
T-Storage (Max)	65 °C
T-Storage (Min)	-40 °C
T-Case Maximum (Nom)	60 °C
Controls and Dimming	
Dimmable	No
Mechanical and Housing	
Product Length	1500 mm

MASTER LEDtube EM/Mains T8

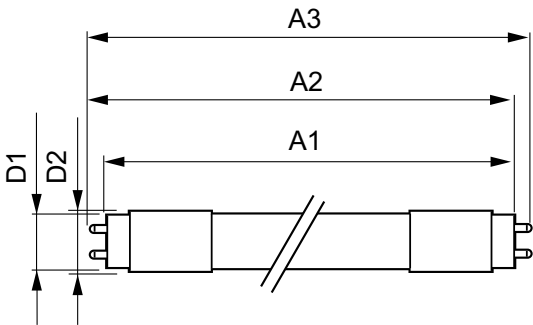
Approval and Application	
Energy Saving Product	Yes
Energy Efficiency Label (EEL)	A++
Approval Marks	TUV CE marking RoHS compliance KEMA Keur certificate
Energy Consumption kWh/1000 h	22 kWh
Product Data	
Full product code	871869673154300

Order product name	MAS LEDtube 1500mm UE 21.5W 840 T8
EAN/UPC - Product	8718696731543
Order code	929001377002
Numerator - Quantity Per Pack	1
Numerator - Packs per outer box	10
Material Nr. (12NC)	929001377002
Net Weight (Piece)	0.270 kg

Warnings and Safety

- NOTES: The overall energy efficiency and light distribution of any installation that uses these lamps are determined by the design of the installation.

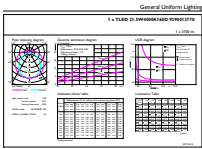
Dimensional drawing



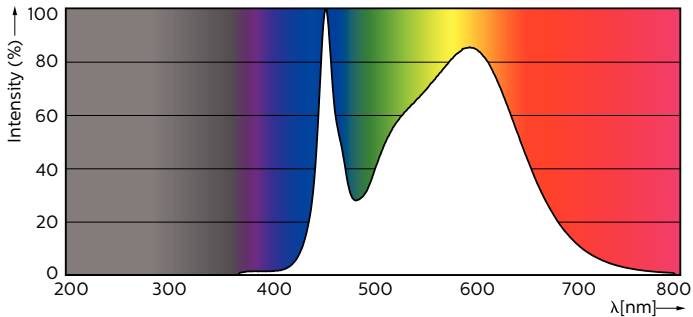
TLED 5ft 21.5-58W 3700lm 4000K G13 ND

Product	D1	D2	A1	A2	A3
MAS LEDtube 1500mm UE 21.5W 840 T8	25.8 mm	28 mm	1498.8 mm	1505.9 mm	1513 mm

Photometric data



General Information 14 Photometric Data 15 Page 10



LEDtube 1500mm 22W G13 840 3700lm

MASTER LEDtube EM/Mains T8

